

DECEMBER 2019

AQUANEGOSYO

KOMIKS



PAGPAPATABA NG ALIMANGO



ISANG UMAGA, SA ISANG BAHAGI NG MANGROVE AREA...

NAPAKAGANDA NA NG MANGROVE AREA NATIN FIDEL! PALIBHASA WALA NG ILLEGAL ACTIVITIES DITO.

TAMA KA RAUL, NAGSIMULA 'YAN NG MABUO NATIN ANG ATING SAMAHAN PARA MABANTAYAN ANG ATING MGA BAKAWAN.

AT NAISIP KO RIN NA IMUMUNGAHI SA ATING SAMAHAN NA MAGKARON DIN TAYO DITO NG PINAGKAKAABALAHAN AT PAGKAKAKITAAN HABANG BINABANTAYAN NATIN ANG LUGAR.


AT ANO NAMAN ANG IMUMUNGAHI MONG PAGKAKAKITAAN NG SAMAHAN?

MARAMI NA TAYONG ALIMANGO DITO, ANG KAILANGAN NA LANG NATIN AY MAS PATABAIN PA SILA.


MAS MATABANG ALIMANGO, MAS MAGANDA ANG KITA!

BANTAY DAGAT

BANTAY DAGAT




MADALI LANG NAMAN ANG MAGPATABA
NG MGA ALIMANGO AT MALAKI ANG
MAITUTULONG NITO PARA SA ATING
KABUHAYAN.



MUKHANG OK NGA
YANG NAISIP MO AH!
SIGE FIDEL! ISAMA
NATIN SA AGENDA NG
MEETING NATIN
BUKAS!

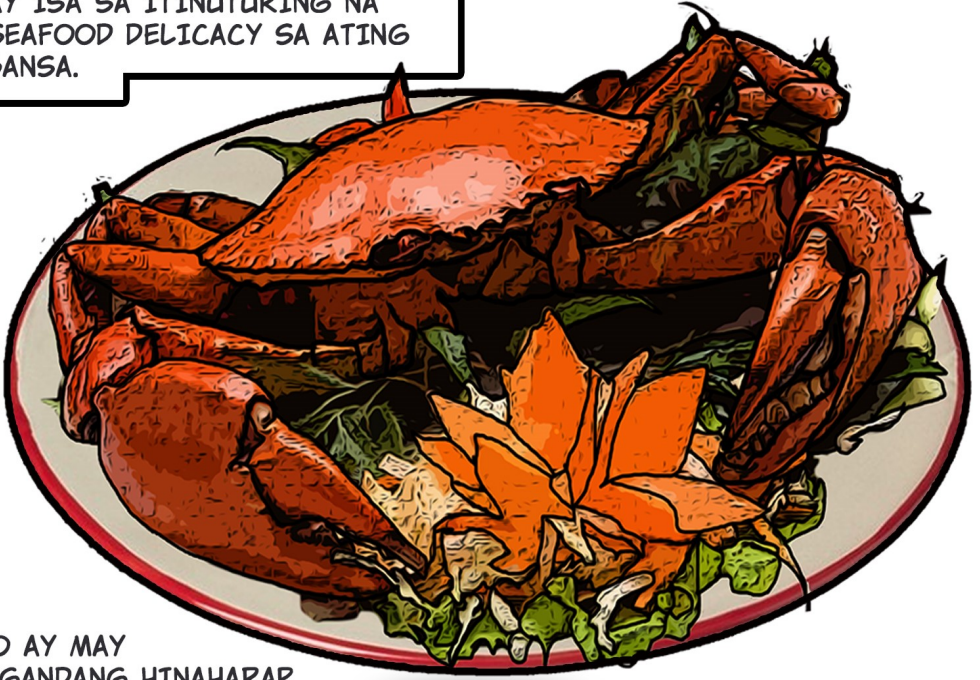
BANTAY DAGAT

BANTAY DAGAT

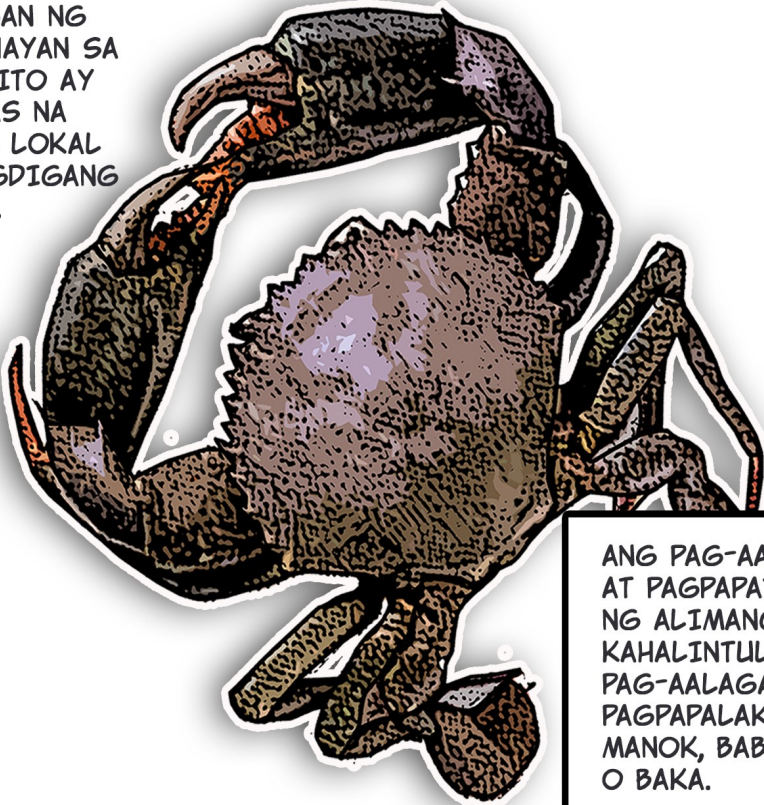


SA GINANAP NA PAGPUPULONG NG KANILANG SAMAHAN,
MARAMI ANG SUMANG-AYON SA MUNGKAHI NI FIDEL. AT
NAPAGKASUNDUAN NILA ANG PAGPATABA NG ALIMANGO.

ANG ALIMANGO O
MANGROVE CRAB (*Scylla* spp.)
AY ISA SA ITINUTURING NA
SEAFOOD DELICACY SA ATING
BANSA.



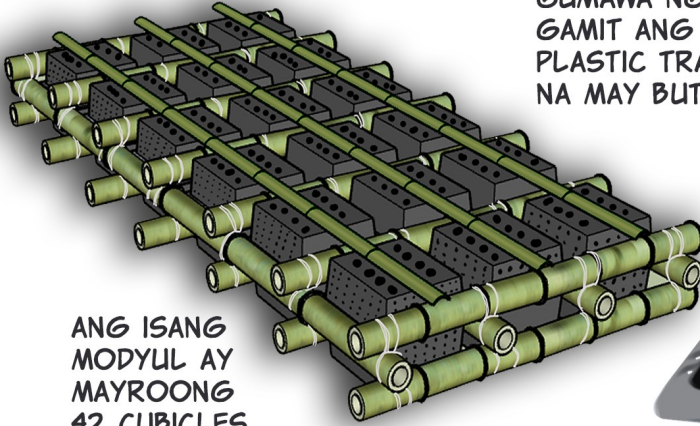
ITO AY MAY
MAGANDANG HINAHARAP
SA LARANGAN NG
PANGKABUHAYAN SA
DAHILANG ITO AY
MAY MATAAS NA
HALAGA SA LOKAL
AT PANDAIGDIGANG
PAMILIHAN.



ANG PAG-AALAGA
AT PAGPAPATABA
NG ALIMANGO AY
KAHALINTULAD NG
PAG-AALAGA AT
PAGPAPALAKI NG
MANOK, BABOY
O BAKA.

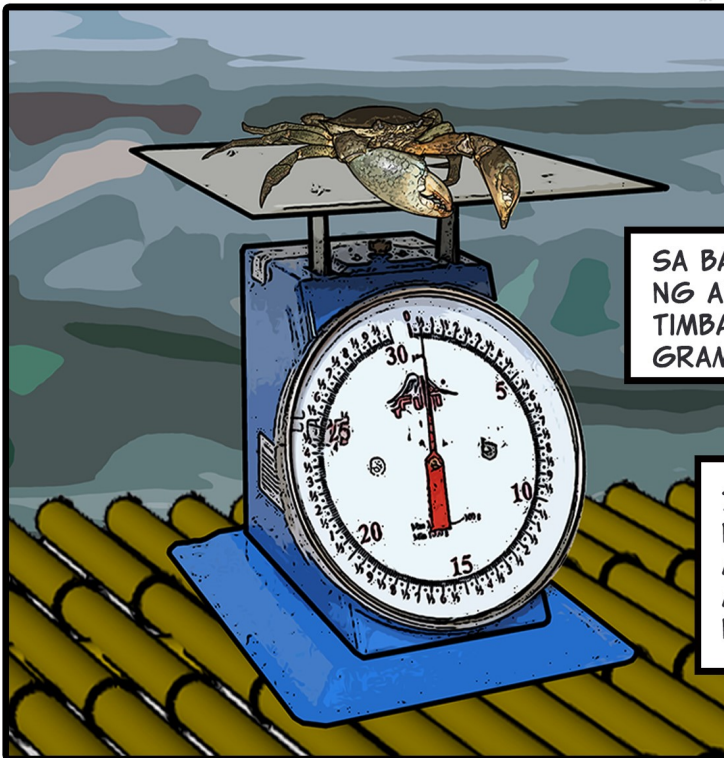
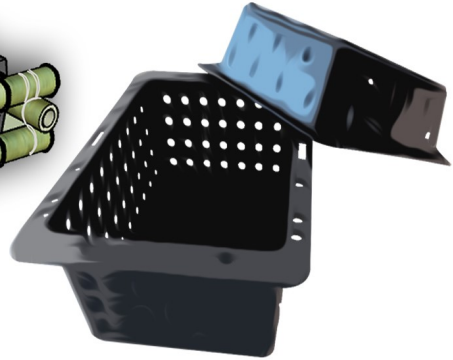
PAGPAPATABA NG ALIMANGO

ANG LAYUNIN NG PAGPAPATABA NG ALIMANGO O CRAB FATTENING AY UPANG MAGDAGDAG NG TIMBANG AT LAKI UPANG MAIBENTA ANG MGA ALIMANGO SA MAS MATAAS NA PRESYO.



ANG ISANG MODYUL AY MAYROONG 42 CUBICLES O HAWLA.

GUMAWA NG MANGROVE CRAB CAGES GAMIT ANG KAWAYAN AT FATTENING PLASTIC TRAYS. ANG TAKIP AY DAPAT NA MAY BUTAS GAMIT SA PAGPAPAKAIN.



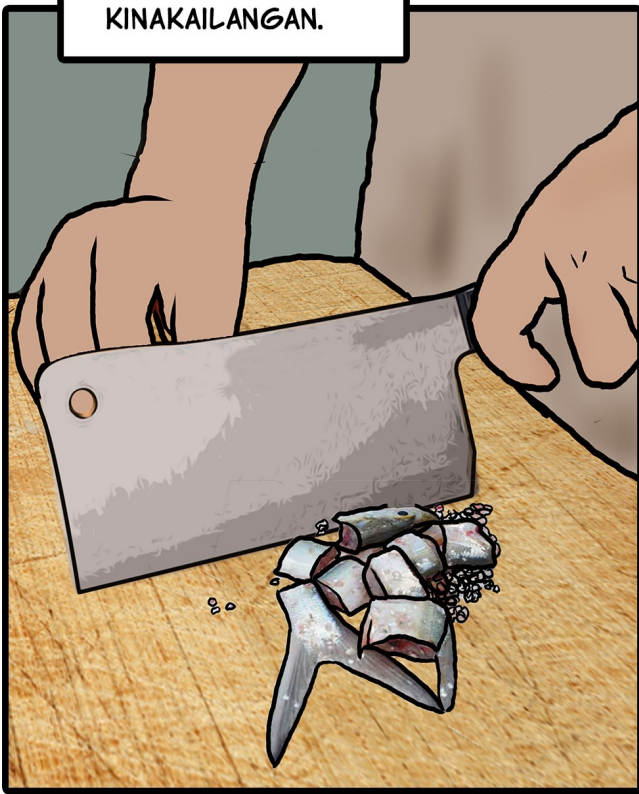
SA BAWA'T HAWLA, LAGYAN NG ALIMANGONG MAY TIMBANG NA 150-200 GRAMO.

ILAGAY ITO SA FISHPOND AT ALAGAAN ANG MGA ALIMANGO SA LOOB NG 15-30 ARAW.

DALAWANG BESES NA PAKAININ NG "TRASH FISHES" ANG MGA ALIMANGO SA ISANG ARAW (ISA SA UMAGA AT ISA SA HAPON).



DAGDAGAN KUNG KINAKAILANGAN.



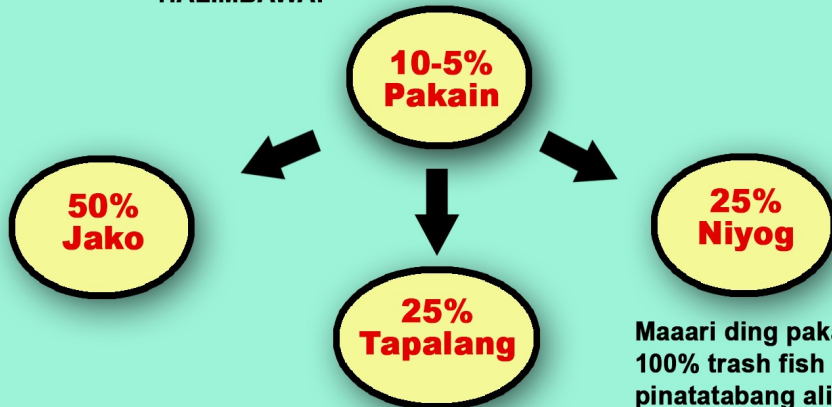
PAG-ESTIMA SA PAKAIN NG ALIMANGO (CRAB FATTENING PROJECT)

$$\text{Dami ng pakain araw-araw (kg)} = \frac{\text{ABW (g)} \times \text{dami ng isda} \times 10\text{-}5\% \text{ FR}}{1000 \text{ g/kg}}$$

*ABW = Average Body Weight (Karaniwang Timbang)

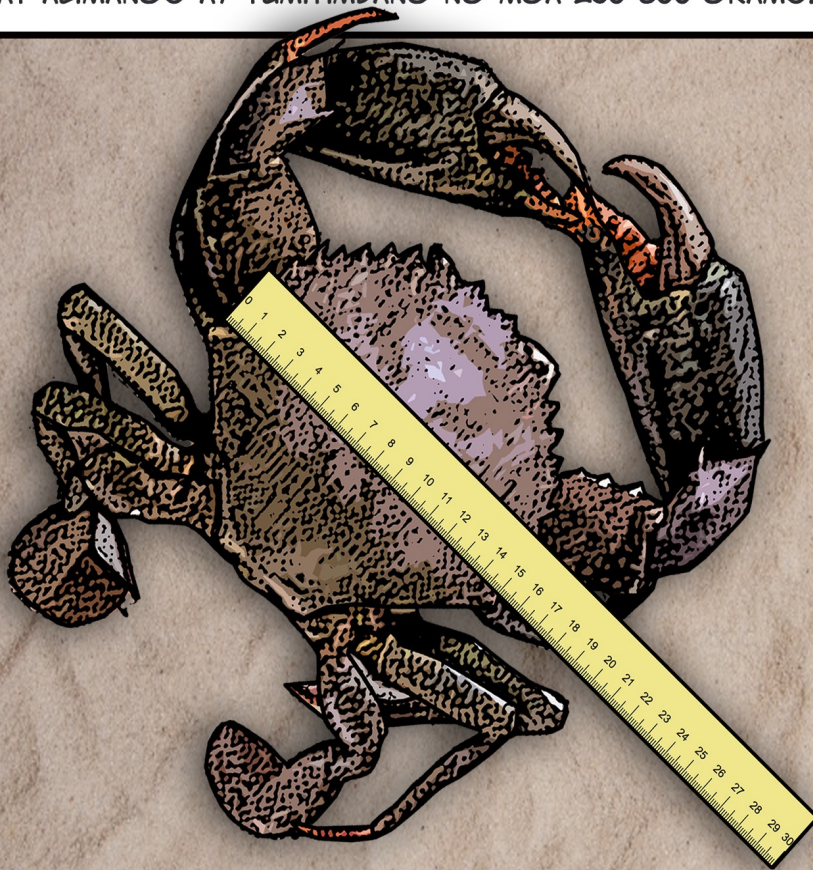
*FR = Feed Rate

HALIMBAWA:

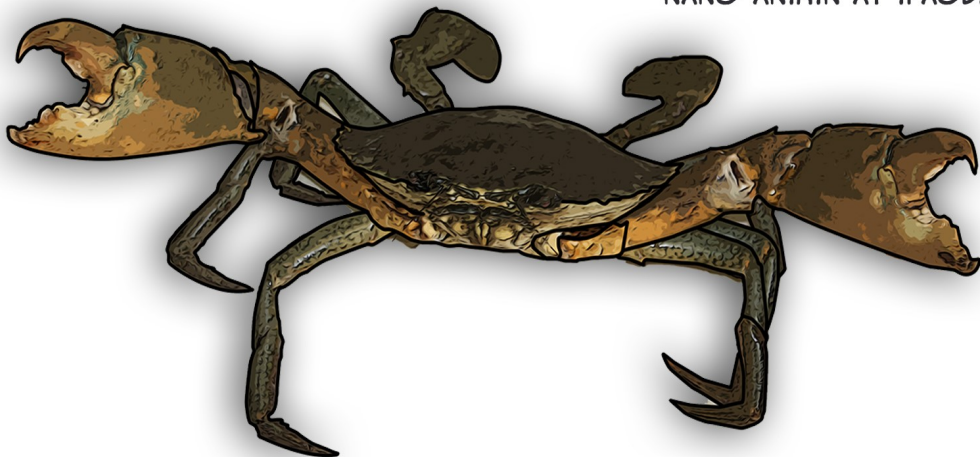


Maaari ding pakainin ng 100% trash fish ang mga pinatatabang alimango.

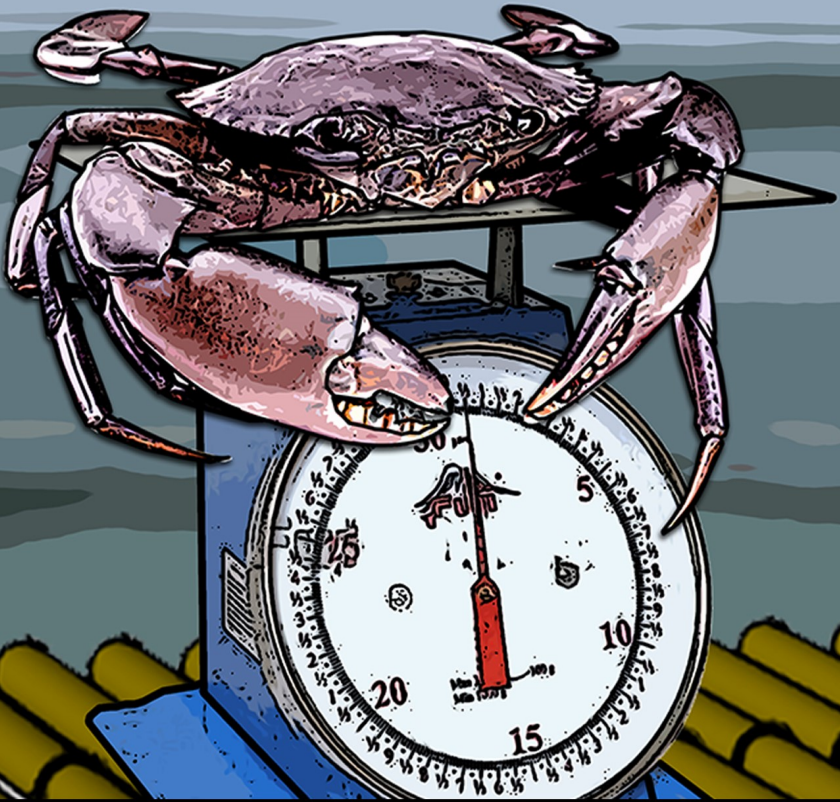
PAGKALIPAS NG 15 ARAW, MAPUPUNA NA ANG BALAT NITO SA LIKOD (CARAPACE) AY 12-15 SENTIMETRO NA ANG LAPAD. ANG BAWAT ALIMANGO AY TUMITIMBANG NG MGA 250-300 GRAMO.



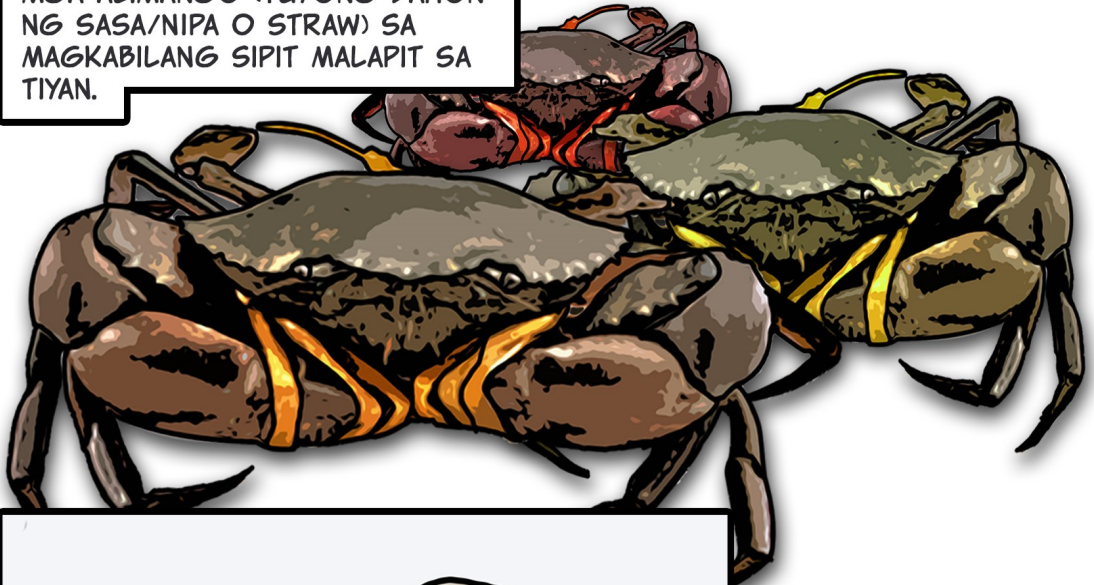
ITO AY PALATANDAAN NA ANG MGA ALIMANGO AY MAARI NANG ANIHIN AT IPAGBILI.



SIGURADUHING ANG BAWAT ALIMANGO AY
TUMITIMBANG NG 200 GRAMO PAATAS
(MARKETABLE SIZE) BAGO ITO ANIHIN.



TALIAN ISA-ISA ANG MGA INANING
MGA ALIMANGO (TUYONG DAHON
NG SASA/NIPA O STRAW) SA
MAGKABILANG SIPIT MALAPIT SA
TIYAN.



ANG MGA ALIMANGO
AY IPINAGBIBILI NG
BUHAY AT PUWEDENG
MANATILING BUHAY
KAHIT WALA SA TUBIG
NG PITONG ARAW.

KAILANGAN LAMANG NA
PANATILIHIN SA MAHALUMIGMIG
NA LAGAYAN AT PALAGING
BASAIN ANG ALIMANGO.



KAGASTUSAN AT KITA

FATTENING CAGE

Particulars	Quantity	Unit	Unit Cost	Total Cost
Bamboo poles (10m length, 5-6in diameter)	15	Pcs	200.00	3,000.00
Mononylon 120 lbs test	3	Kgs	500.00	1,500.00
Nipa Shingles (6ft length)	50	Pcs	10.00	500.00
Fattening Plastic Trays (0.85ft x 0.85ft x 0.85ft)	42	Pcs	160	6,720.00
Total Materials Cost:				11,720.00
Manpower	15	Pax	150.00	2,250.00
Total Labor Cost:				2,250.00
Styrobox 30kg. capacity	1	Pc	500.00	500.00
Weighing Scale (2000 grammers capacity); branded	1	Pc	2,000.00	2,000.00
Thong	1	Pc	100.00	100.00
Stainless Ladle	1	Pc	100.00	100.00
Stainless Scissor (Heavy duty)	1	Pc	100.00	100.00
Softie Plastic Straw (1kg/roll)	1	Kg	100.00	100.00
Total Various Livelihood Materials Cost:				2,900.00
TOTAL ASSETS (PhP)				16,870.00

RAW MATERIALS

Particulars	Quantity per Cycle	Unit	Unit Cost	Cycle	Year 1	Year 2	Year 3
					3 cycles/2 months or 18 cycles/year		
Lean Crabs (150-200g/pc)	9	Kgs	300.00	2,700.00	48,600.00	49,815.00	51,060.00
Trash Fish	14	Kgs	30.00	420.00	7,560.00	7,749.00	7,943.00
TOTAL (PhP)				3,120.00	56,160.00	57,564.00	59,003.00

Note: Costs are assumed to increase by 2.5% annually based on the inflation rate.

DIRECT LABOR

Particulars	No. of Worker/s	Wage per Cycle	Year 1	Year 2	Year 3
			3 cycles/2 months or 18 cycles/year		
Labor	1	500.00	9000.00	9,450.00	9,922.50
TOTAL (PhP)			9000.00	9,450.00	9,922.50

Note: Wage assumed to increase by 5% annually.

OVERHEAD EXPENSES

Particulars	Cost per Cycle	Year 1	Year 2	Year 3
		3 cycles/2 months or 18 cycles/year		
Transportation/Freight in	300.00	5,400.00	5,535.00	5,673.38
Supplies (straw)	200.00	3,600.00	3,690.00	3,782.25
Depreciation Cost	312.41	5,623.33	5,623.33	5,623.33
TOTAL (PhP)		812.41	14,623.33	14,848.33
			15,078.96	

Note: Costs are assumed to increase by 2.5% annually based on the inflation rate.

PROJECT SALES

Particulars	Cost per Cycle	Year 1	Year 2	Year 3
Stocking Volume per Cycle	42 pcs	42 pcs	42 pcs	42 pcs
Multiply by Survival Rate	90%	90%	90%	90%
Harvested Volume per Cycle	38	38	38	38
Multiply by Weight per Crab during Harvest	0.30 kgs	0.30 kgs	0.30 kgs	0.30 kgs
Production Volume per Cycle	11.34 kgs	11.34 kgs	11.34 kgs	11.34 kgs
Multiply by Farmgate Price per Kilogram	Php 550.00	Php 550.00	Php 580.00	Php 610.00
SALES PER CYCLE/2 MONTHS	Php 6,237.00	Php 6,237.00	Php 6,577.20	Php 6,917.40
Production volume per cycle		11.34 kgs	11.34 kgs	11.34 kgs
Multiply by Number of Cycles in a Year		18	18	18
Annual Production Volume		204.12	204.12	204.12
Multiply by Farmgate Price per Kilogram		Php 550.00	Php 580.00	Php 610.00
ANNUAL SALES (Php)		112,266.00	118,389.60	124,513.20

PROJECTED INCOME

Particulars	Per Cycle	Year 1	Year 2	Year 3
INCOME				
A. Total Sales	6,237.00	112,266.00	118,389.60	124,513.20
B. Total Non-Cash Sales				
C. Total Income (A-B)	6,237.00	112,266.00	118,389.60	124,513.20
COSTS				
Variable Cash Costs				
Raw Materials	3,120.00	56,160.00	57,564.00	59,003.00
Direct Labor	500	9000	9,450.00	9,922.50
Supplies	200	3,600.00	3,690.00	3,782.25
D. Total Variable Costs	3,820.00	68,760.00	70,704.00	72,707.75
E. Gross Margin (C-D)	2,417.00	43,506.00	47,685.60	51,805.45
FIXED CASH COSTS				
Transportation/Freight in	300	5,400.00	5,535.00	5,673.38
F. Total Fixed Cash Costs	300	5,400.00	5,535.00	5,673.38
FIXED NON-CASH COSTS				
Depreciation	312.41	5,623.33	5,623.33	5,623.33
G. Total Fixed Non-Cash Costs	312.41	5,623.33	5,623.33	5,623.33
H. Total Costs (D+F+G)	4,432.41	79,783.33	81,862.33	84,004.46
I. Net Income (C-H)	1,804.59	32,482.67	36,527.27	40,508.74



FISHERIES, COASTAL RESOURCES AND LIVELIHOOD PROJECT
PCA BUILDING ELLIPTICAL ROAD, DILIMAN QUEZON CITY
<http://fishcoralproject.bfar.da.gov.ph>