

Philippine Fisheries Profile 2013



Department of Agriculture

BUREAU OF FISHERIES AND AQUATIC RESOURCES

PCA Compound, Elliptical Road, Diliman, Q. C.

Tel Nos. 929-9597

Fax Nos. 929-8074

Website: www.bfar.da.gov.ph

E-mail: info@bfar.da.gov.ph



Foreword

For the year 2013, we are imparting a year-end performance of the Philippine fisheries industry which also contains regional production on volume and value, by commodity, by culture environment; export and import data and other relevant information.

We also acknowledge our data contributors from the Philippine Statistics Authority - Bureau of Agricultural Statistics (BAS), the National Statistics Office (NSO), the National Statistics Coordination Board (NSCB), and other agency for the support they have given.



Department of Agriculture

BUREAU OF FISHERIES AND AQUATIC RESOURCES

PCA Compound, Elliptical Road, Diliman, Q. C.

Tel Nos. 929-9597

Fax Nos. 929-8074

Website: www.bfar.da.gov.ph

E-mail: info@bfar.da.gov.ph



ATTY. ASIS G. PEREZ
Director

ENDNOTES

Sources of Data:

- ^{1/} NAMRIA (Wikipedia and CIA World Factbook 2009)
- ^{2/} 1992 Fishery Statistics, Bureau of Agricultural Statistics (BAS)
This refers to fishpond area acquired by the operator whether utilized or not during the reference period.
This includes nursery and transition ponds and undeveloped areas.
- ^{3/} National Statistical Coordination Board (NSCB)
(www.nscb.gov.ph)
- ^{4/} Preliminary data, 2002 Census of Fisheries
- ^{5/} National Statistics Office (NSO) (www.census.gov.ph)
- ^{6/} Bureau of Agricultural Statistics (BAS) (www.bas.gov.ph)
- ^{7/} Directory of Philippine Wetlands, Volume II, AWBPFI
- ^{8/} BFAR Regional Yearbook, 2000
- ^{9/} BFAR Regulatory and Quarantine Division
- ^{10/} Food and Nutrition Research Institute Website, (<http://www.fnri.dost.gov.ph>.)
- ^{11/} FAO Website (<http://www.fao.org>.)
- ^{12/} Agricultural Marketing Statistical Analysis Division (AMSAD, BAS)

Contents

E. PRICES OF SELECTED FISH SPECIES, PHILIPPINES, 2012- 2013 ^{12/} (pesos per kilogram)

Species	2012		2013	
	Wholesale	Retail	Wholesale	Retail
1. Indian mackerel (Alumahan)	100.58	119.28	98.13	121.01
2. Milkfish (Bangus)	104.49	125.01	100.46	123.84
3. Threadfin bream (Bisugo)	117.65	156.06	120.74	161.26
4. Blue crab (Alimasag)	141.87	194.97	134.29	197.27
5. Caesio (Dalagang Bukid, lapad)	113.94	154.02	117.97	158.03
5. Anchovies (Dilis)	54.3	83.77	50.42	84.05
6. Roundscad (Galunggong)	83.14	107.68	82.29	108.02
7. Slipmouth (Sapsap)	87.52	126.1	83.8	128.14
9. Endeavor prawn (Shrimp, Suaje)	254.41	288.12	248.48	288.34
10. Tilapia	75.36	95.96	74.07	98.17
11. Frigate tuna (Tulingan)	89.36	110.4	88.64	111.57
12. Shrimp, Tiger prawn (sugpo)	362.41	447.91	398.85	453.35

FOREWORD

HIGHLIGHTS

8

FISHERY RESOURCES

- ▶ A. Marine Resources 15
- B. Inland Resources 15

▶ FISHERIES CONTRIBUTION TO THE ECONOMY, 2013

- A. Fisheries Contribution to Total GDP 16
- B. Fisheries Contribution to GVA Agricultural Sector 16
- C. Employment 19
- D. Balance of Trade 17
- E. Total Fish Production, by Sector, 2013 18
- F. Fish Production, by Sector and Region, 2013 20
- F-a. Value of Fish Production, by Sector and Region, 2013 21
- G. Fish Production, by Sector, 2004 -2013 22
- H. Five Year Fish Production, Trend 2009 -2013 24

▶ AQUACULTURE PRODUCTION, 2013

- A. Summary of Aquaculture Production by Culture Environment and Region, 2013 26
- B. Aquaculture Production by Culture Environment, Region and Species, 2013 27
- C. Aquaculture Production of Major Commodities by Culture Environment and by Region, 2013 36
- D. Major Species Produced in Aquaculture Fisheries, 2013 39
- E. Area and Location of Major Lakes in the Philippines 40

▶	MUNICIPAL FISHERIES PRODUCTION, 2013	
	A. Municipal Fisheries Production, by Region, 2013	42
	B. Marine Municipal Fish Catch, by Major Fish Species, 2013	43
	C. Number of Municipal Fishing Bancas, By Region, 2000	44
▶	COMMERCIAL FISHERIES PRODUCTION, 2013	
	A. Commercial Fisheries Production, by Region and by Type of Landing Centers, 2013	46
	B. Commercial Fisheries Production, by Major Fish Species, 2013	47
	C. Number of Commercial Fishing Operators, and Vessels, by Region, as of 2007	48
▶	EXTERNAL TRADE	
	A. Exports	
	1. Exports of Fish and Fishery Products by Kind, Quantity and Value, 2013	50
	2. Major Fishery Exports in Terms of Value, 2013	51
	3. Major Destination of Top Three Fishery Exports by Kind, Quantity and Value, 2013	52
	4. Fishery Exports, by Major Country of Destination in Terms of Value, 2013	55
	B. Imports	
	1. Imports of Fish and Fishery Products by Kind, Quantity and Value, 2013	57
	2. Major Fishery Imports in Terms of Value, 2013	58
	3. Fishery Imports, by Major Country of Origin in Terms of Value, 2013	60

D. WORLD AQUACULTURE PRODUCTION OF AQUATIC PLANTS BY PRINCIPAL PRODUCERS IN 2012 ^{11/}

Major Countries	Volume (MT)	% Share	Value (US\$' 000)	% Share
1. China	12,832,060	53.97	2,852,190	44.78
2. Indonesia	6,514,854	27.40	1,347,538	21.16
3. Philippines	1,751,071	7.36	231,735	3.64
4. Korea Rep.	1,022,326	4.30	391,705	6.15
5. Korea D P Rp.	444,300	1.87	68,645	1.08
6. Japan	440,754	1.85	1,277,083	20.05
7. Malaysia	331,490	1.39	64,406	1.01
8. Vietnam	234,600	0.99	117,300	1.84
9. Zanzibar	150,876	0.63	1,915	0.03
10. Solomon Island	13,000	0.05	530	0.01
11. Other Countries	41,118	0.17	16,592	0.26
World Total	23,776,449	100	6,369,639	100

**WORLD AQUACULTURE PRODUCTION OF FISH, CRUSTACEANS,
MOLLUSCS, etc. BY PRINCIPAL PRODUCERS IN 2012^{11/}**

Major Countries	Volume (MT)	% Share	Value (US\$ '000)	% Share
1. China	41,108,306	61.69	66,212,552	48.07
2. India	4,209,415	6.32	9,248,393	6.71
3. Vietnam	3,085,500	4.63	5,807,800	4.22
4. Indonesia	3,067,660	4.60	6,715,108	4.88
5. Bangladesh	1,726,066	2.59	3,911,495	2.84
6. Norway	1,321,119	1.98	5,166,850	3.75
7. Thailand	1,233,877	1.85	3,316,288	2.41
8. Chile	1,071,421	1.61	5,993,047	4.35
9. Egypt	1,017,738	1.53	2,010,814	1.46
10. Myanmar	885,169	1.33	1,500,569	1.09
11. Philippines	790,894	1.19	1,954,613	1.42
12. Brazil	707,461	1.06	1,502,001	1.09
13. Japan	633,047	0.95	4,102,417	2.98
14. Korea Rep	484,404	0.73	1,394,423	1.01
15. Other Countries	5,291,176	7.94	18,895,138	13.72
World Total	66,633,253	100.00	137,731,508	100.00

11/ These countries are those with production of 140,000 tons or more in 2012

► **OTHER FISHERIES INFORMATION**

A. Food Consumption

1. Mean One Day Per Capita Food Consumption, Philippines, 2003 62
2. Comparison of Mean One-Day Per Capita Food Consumption: 1987, 1993 and 2003 63
3. Per Capita Consumption of Fish and Fishery Products, 1993 64

- B. World Fisheries Production of Fish, Crustaceans, Molluscs and Aquatic Plants (includes seaweeds), by Capture and Aquaculture, by Major Producers, 2012 65

- C. World Aquaculture Production of Fish, Crustaceans, Molluscs, etc. by Principal Producers in 2012 66

- D. World Aquaculture Production of Aquatic Plants by Principal Producers in 2012 67

- E. Prices of Selected Fish Species, Philippines, 2012-2013 68

LIST OF FIGURES

- 1 Philippine Marine Jurisdictional Boundaries 14
- 2 Total Fish Production, by Sector, 2013 19
- 3 Volume of Fish Production, by Sector, 2004-2013 23
- Value of Fish Production, by Sector, 2004-2013 23
- 4 Five-Year Fish Production, Trend 2009-2013 24
- 5 Major Fisheries Export in Terms of Value, 2013 56

ENDNOTES

Highlights

World Scenario: Philippine Fisheries

- In 2012, the Philippines ranked 7th among the top fish producing countries in the world with its total production of 4.87 million metric tons of fish, crustaceans, mollusks, and aquatic plants (including seaweeds). The production constitutes 2.66% of the total world production of 182.9 million metric tons (*FAO website*).
- The Philippines' 0.791 million metric tons aquaculture production of fish, crustaceans and mollusks in 2012 ranked 11th in the world and a 1.19% share to the total global aquaculture production of 66.63 million metric tons. In terms of value, the country's aquaculture production of fish, crustaceans and mollusks has amounted to over 1.95 billion dollars (*FAO website*).
- Similarly, the Philippines is the world's 3rd largest producer of aquatic plants (including seaweeds) having produced a total of 1.75 million metric tons or nearly 7.36% of the total world production of 23.78 million metric tons (*FAO website*).

Contribution to National Economy, 2013

- The fishing industry's contribution to the country's Gross Domestic Products (GDP) were 1.7 % and 1.9% at current and constant 2000 prices, respectively. This translates to some P199.3 billion for current prices and P131 billion for constant prices of the country's GDP of P11,548 billion (current prices) and P6,765 billion (constant prices).
- The industry also accounted for 15.4% (P199.3 billion) and 18.5% (P131 billion) of the Gross Value Added (GVA) in Agriculture,

B. WORLD FISHERIES PRODUCTION OF FISH, CRUSTACEANS, MOLLUSCS AND AQUATIC PLANTS ^{11/} (includes seaweeds), BY CAPTURE AND AQUACULTURE, BY MAJOR PRODUCERS, 2012 ('000 MT)

Major Countries	TOTAL		Fish, Crustaceans & Molluscs		Aquatic Plants (includes seaweeds)		
	MT	%share	Capture	Aquaculture	Capture	Aquaculture	Total
1. China	70,365,449	38.48	16,167,443	41,108,306	257,640	12,832,060	13,089,700
2. Indonesia	15,403,955	8.42	5,813,800	3,067,660	7,641	6,514,854	6,522,495
3. India	9,076,778	4.96	4,862,861	4,209,415	-	4,502	4,502
4. Viet Nam	5,942,300	3.25	2,622,200	3,085,500	-	234,600	234,600
5. USA	5,557,787	3.04	5,128,381	420,024	9,382	-	9,382
6. Peru	4,917,402	2.69	4,841,524	72,147	3,585	146	3,731
7. Philippines	4,865,220	2.66	2,322,850	790,894	405	1,751,071	1,751,476
8. Japan	4,816,643	2.63	3,644,328	633,047	98,514	440,754	539,268
9. Russian Fed	4,484,450	2.45	4,331,398	144,871	6,597	1,584	8,181
10. Myanmar	4,464,819	2.44	3,579,250	885,169	-	400	400
11. Chile	4,084,463	2.23	2,572,881	1,071,421	436,035	4,126	440,161
12. Norway	3,612,010	1.98	2,150,555	1,321,119	140,336	-	140,336
13. Korea Rep.	3,187,238	1.74	1,670,385	484,404	10,123	1,022,326	1,032,449
14. Thailand	3,068,450	1.68	1,834,573	1,233,877	-	-	-
15. Other Countries	39,006,349	21.33	29,793,801	8,105,399	137,123	970,026	1,107,149
World Total	182,853,313	100.00	91,336,230	66,633,253	1,107,381	23,776,449	24,883,830

3. PER CAPITA FOOD CONSUMPTION OF FISH AND FISHERY PRODUCTS, 1993

Fish and Other Products	Total (Kg/Year)
1. FISH	38
1.1 Fresh Fish	25
Tulingan (Frigate Tuna)	2
Bangus (Milkfish)	4
Galunggong (Roundscad)	3
Dilis, Buo (Anchovy)	1
Alumahan (Indian Mackerel)	1
Tamban (Sardines)	1
Dalagang Bukid (Fusilier)	n
Sapsap (Slipmouth)	1
Bisugo (Threadfin Bream)	n
Tilapia (Cichlid)	3
Albakora/Tambakol	1
Balila/Espada	n
Hasa-hasa	1
Lapu-lapu	n
Matangbaka	1
Maya-Maya	n
Salay-salay	n
Silinyasi/Tunsoy	n
Tanigue	n
Others (fresh fish & cooked fish recipe)	5
1.2 Dried Fish (as fresh fish)	4
1.3 Processed Fish *	5
Bagoong (as fresh fish)	1
Patis	n
Canned Fish (sardines, mackerel, salmon, etc)	3
Smoked fish (all tinapa type)	1
1.4 Crustaceans and Mollusks	4
Shrimp (all type)	1
Crabs	n
Squid/Octopus	1
Tahong	1
Others (fresh)	1
Dried and Processed (as fresh)	n
Bagoong (as fresh)	n

Notes:

a) Raw as purchased weight or as available in the kitchen including inedible and edible wastage.

b) Breakdown don't add up to total due to roundings

c) N- negligible (less than 0.5 grams)

Hunting, Forestry and Fishing Group of P1,297 billion and P706.6 billion at current and constant prices, respectively, the largest share next to agricultural crops.

Employment in the Fishing Industry

The industry employed a total of 1,614,368 fishing operators nationwide (NSO 2002 Census for Fisheries) of which the municipal fisheries sector accounted for more than one million (1,371,676) operators while the commercial and aquaculture sectors added some 16,497 and 226,195 operators, respectively.

Performance of the Fishing Industry

- Total volume of fisheries production in the Philippines from January to December 2013 reached 4,705,413 metric tons. Fisheries production drop down by 0.2% from 5 million metric tons in CY 2008 to 4.7 million metric tons in CY 2013. Average annual production growth rate within that period was registered at 0.03%. In terms of value, the 2013 fisheries production was valued at 244.6 billion pesos as compared with the 215.8 billion pesos in 2008, an average yearly increment of 5.38 billion pesos.
- The 2013 fisheries production also showed a 3.28% decrease from the previous year's production of 4.9 million metric tons. The 2013 production was valued at 244.6 billion pesos.
- The annual performance of the fishing industry was attributed to the production of the three (3) sectors. The commercial sector has an increased production of 2.43 % (1.07 million MT) as compared to last year's production of 1.04 million MT while the aquaculture sector was 6.63% (2.373 million MT) lower than the previous year's level (2.541 million MT) followed by the municipal sector with -1.28 % (1.26 million MT).

- At the regional level, the Autonomous Region for Muslim Mindanao (ARMM) registered the highest production among all regions with its 17.8% or 836,568 metric tons share to the total fisheries production, where seaweed was the major commodity produced followed by Region IX with a 12.2% share or 574,585 metric tons. Region IV-B (MIMAROPA) recorded an output of 550,759 metric tons or 11.7% to the total fisheries production.
- In terms of value, the industry has contributed P244.6 billion in 2013 as compared to P237.7 billion in 2012. The top three (3) regions were Region III with P30.44 billion, followed by Region VI with P28.47 billion and Region XII with P25.6 billion.
- The Aquaculture fisheries sub-sector contributed the highest value of about P 93.7 billion or 38 %. Next is municipal fisheries sub-sector with a total production of P 80.9 billion. Total fish caught by marine fishermen was valued at P71.9 billion while inland fisheries production was valued at P8.99 billion. The commercial sub-sector contributed P69.9 billion or 29% to the total fishery output.

Fisheries Export and Import Performance

Exports 2013

- Foreign trade performance of the fishery industry in 2013 registered a net surplus of 1,036 million dollars – total export value of 1,386 million US dollars and import value of 300 million US dollars.
- Export volume increased by 101.7% from 165,324 MT in 2012 to 333,465 MT in 2013. The three major export commodities (tuna, seaweeds, shrimp/prawn,) combined for 69% (231,130 MT) of the total export volume (333,465 MT) and 69% (US\$967 million) of the total export value US\$ 1,386 million in 2013.

2. Comparison of Mean One- Day per Capita Food Consumption: 1987, 1993, 2003

Food Group/Subgroup	Consumption, g		
	(Raw, "as Purchased")		
	1987	1993	2003
All Foods	869	803	886
Cereals and Cereal Products	345	340	364
Rice and Products	303	282	303
Corn and Products	24	36	31
Other Cereals and Products	18	22	30
Starchy Roots and Tubers	22	17	19
Sugar and Syrups	24	19	24
Fats and Oils	14	12	18
Fish, Meat and Poultry	157	147	185
Fish and Products	111	99	104
Meat and Products	37	34	61
Poultry	9	14	20
Eggs	10	12	13
Milk and Milk Products	43	44	49
Dried Beans, Nuts and Seeds	10	10	10
Vegetables	111	106	111
Green Leafy and Yellow Vegetables	29	30	31
Other Vegetables	82	76	80
Fruits	107	77	54
Vitamin C-Rich Fruits	24	21	12
Other Fruits	83	56	42
Miscellaneous	26	19	39

A. FOOD CONSUMPTION ^{10/}

1. Mean One Day Per Capita Food Consumption, Philippines, 2003

Food Group/Subgroup	Consumption		% of Total Food Intake
	(Raw, As Purchased) *		
	kg/yr	g/day	
Cereals and Cereal Products	133	364	41.1
Rice and Products	111	303	34.2
Corn and Products	11	31	3.5
Other Cereals and Products	11	30	3.4
Starchy Roots and Tubers	7	19	2.2
Sugar and Syrups	9	24	2.7
Fats and Oils	7	18	2
Fish, Meat and Poultry	67	185	20.9
Fish and Products	38	104	11.7
Meat and Products	22	61	6.9
Poultry	7	20	2.3
Eggs	5	13	1.5
Milk and Milk Products	18	49	5.6
Whole Milk	13	35	4
Milk Products	5	14	1.6
Dried Beans, Nuts and Seeds	4	10	1.1
Vegetables	40	111	12.5
Green Leafy and Yellow Vegetables	11	31	3.5
Other Vegetables	29	80	9
Fruits	20	54	6.1
Vitamin C-Rich Fruits	4	12	1.4
Other Fruits	16	42	4.7
Miscellaneous	14	39	4.4
Beverages	9	26	2.9
Condiments	4	10	1.2
Others	1	3	0.3
Total Food	<u>324</u>	<u>886</u>	<u>100</u>

* As available in the kitchen including inedible and edible wastage.

- Tuna remained as the top export commodity with a collective volume of 165,757 MT for fresh/chilled/frozen, smoked/dried, and canned tuna products valued at US \$681.618 million. Canned tuna, though, constitutes bulk of tuna products being exported. In general, tuna export is up by 192% in terms of volume and higher in terms of value, 65% than the previous year. Major markets for this commodity include USA, Japan and United Kingdom.
- Seaweeds came 2nd on export value with 64% increase from US\$185.6 million in 2012 to US\$ 218.7 million in 2013 or 18% share to the total export earnings for that year. Carrageenan remains the major product being shipped abroad comprising 80% of the total seaweed export value in pesos. USA, China and Belgium are among the major markets for Philippine seaweed products.
- Shrimp/Prawn ranked 3rd with a total contribution of US\$ 67.5 million to the total export value, higher than last years' export earnings of \$37.3 million. Most of the shrimps/prawns are exported in fresh/chilled/frozen form with a total value of US\$ 50.6 million or 75% of the total shrimp/prawn export revenue. The 2013 shrimp/prawn exports rose by 220% in volume (MT) and 81% in value (USD) from the previous year's export. Japan, USA and France are among the major destination of shrimp/prawn products.
- Other major fishery exports e.g. crabs/crab fats, octopus, lapu-lapu, cuttlefish/squid, ornamental fish, roundscad and sea cucumber constitute 79% or US\$ 1,089 million of the total US\$ 1,386 million export revenues. Other commodities accounted for the remaining 21% of the total export value/earnings.
- Among the major destination of Philippine fish and fishery product exports (in terms of value) with percentage share are

USA, 25.3%; Japan, 13.4%; Germany , 7.2%; Hongkong 5.9%; UK, 6%; Spain, 4.5% ; France, 6.7%, , Taiwan (ROC) 2.3%, Canada, 1.2%, and China, Rep Of 3%; . Other countries have a cumulative share of 16%.

Imports

- Fifty percent of the total import value for 2013 was contributed by three major commodities in chilled/frozen fish, 1.1% in prawn feeds, ; as well as flour, meals and pellets of fish, crustaceans, and mollusks fit and unfit for human consumption, 2.1%. These commodities have an aggregated value of US\$ 100.6 million out of the US\$ 299.6 million total import value.
- Prawn feeds were mostly sourced from Thailand, 0.2%; Taiwan, (ROC) 0.5%; China, 0.3%; Vietnam, 0.1%; and USA, 0.1%; with a total of \$ 3.24 million on import value.
- Chilled/frozen fish comprise of tuna, mackerel and sardines with a total of US\$ 150.9 million . Tuna has an import value of US \$90.92 million, the largest among the three major import with a share of 30%. These were mostly supplied by Papua New Guinea 8 %; Taiwan (ROC) 10.2%; Japan 2.5%; Marshall Island, 0.5% and Korea Rep, 1.7%. Other fishery imports include mackerel, 14.7% and sardines 5.3%.
- In terms of value, in general, the Philippine fishery imports originated from the following major countries: China, 24%; Indonesia, 5%; Taiwan (ROC), 11%; Papua New Guinea, 8%; Vietnam, 14%; Japan 6% ; ; Korea, 4%; USA, 5%; and Denmark, 1%. Other countries contributed 20.5% to the total import value of fish and fishery products

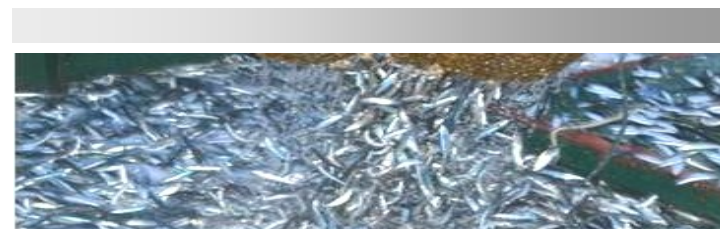
• *Other Fishery Information*



3. Fishery Imports, by Major Country of Origin in Terms of Value, 2013

Major Countries	Quantity (MT)	CIF Value	
		('000 \$)	('000 Pesos)
China, People'S Republic Of	107,435	71,201	3,055,932
Indonesia	8,326	15,016	644,497
Taiwan (Republic Of China)	19,854	33,240	1,426,669
Papua New Guinea	17,460	22,689	973,797
Vietnam	26,933	41,943	1,800,176
Japan (Excludes Okinawa)	17,190	23,387	1,003,754
Korea, Republic Of South	8,540	10,695	459,034
United States Of America	10,613	15,536	666,809
Denmark	1,177	4,352	186,777
Singapore	6,278	9,659	414,544
Chile	4,244	5,591	239,985
Norway	2,932	8,576	368,081
Peru	2,336	3,228	138,540
Thailand	9,025	10,509	451,055
New Zealand	1,194	3,896	167,209
Malaysia	929	1,121	48,099
Marshall Islands, Rep. Of	755	1,768	75,872
Germany	3,523	2,337	100,321
Uk Great Britain And N. Ireelan	1,474	1,486	63,782
Hongkong	118	308	13,202
Total Major Countries	250,336	286,536	12,298,135
Other Countries	11,785	13,079	561,349
Total	262,121	299,615	12,859,484

- *Fishery Resources*
- *2013 Fisheries Contribution To The Economy*



Philippine Marine Jurisdictional Boundaries

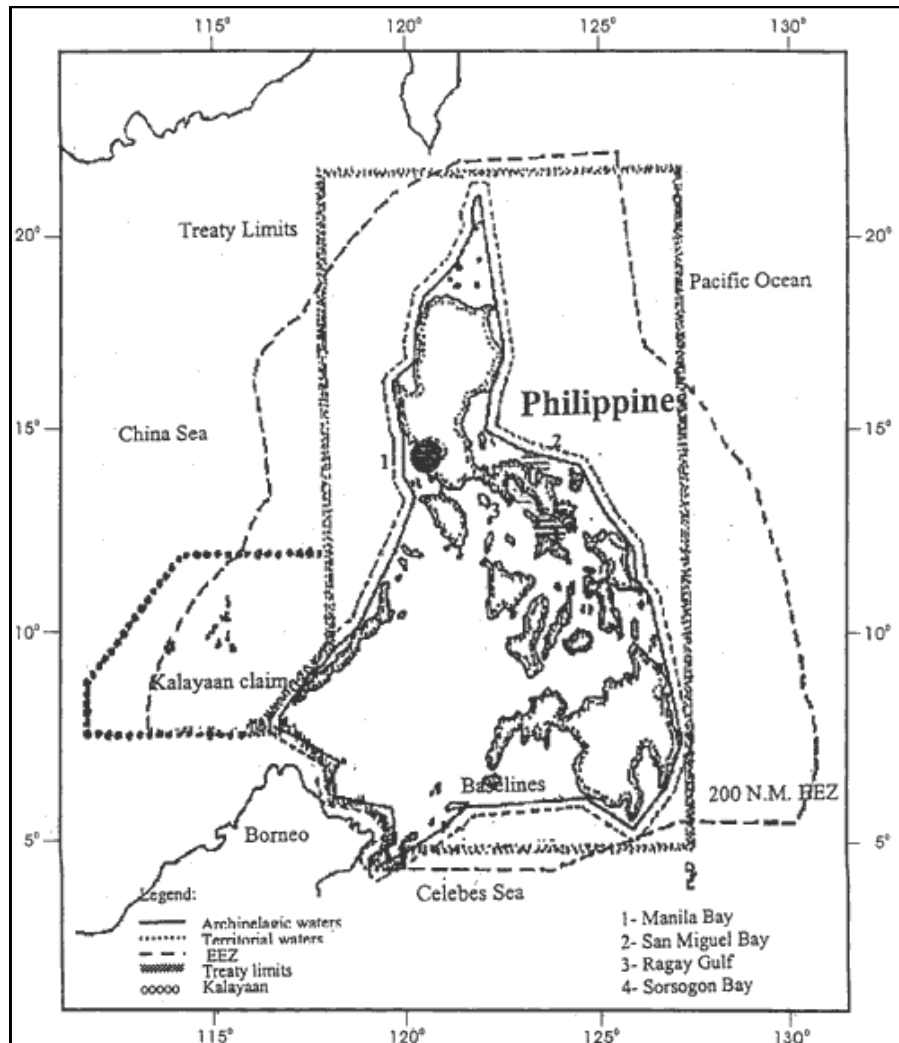


Figure 1. Map of the Philippines showing the limits of archipelagic, territorial waters treaty limits Exclusive Economic Zone (200 N. M. EEZ) and Kalayaan claim.

Commodity/Kind	Quantity (MT)	CIF Value	
		('000 \$)	('000 Pesos)
2. Prawn feeds	3,016	3,241	139,086
Taiwan	1,449	1,610	69,102
China, People'S Rep. Of	192	91	3,902
U S A	219	329	14,139
Thailand	522	682	29,264
Australia	98	98	4,201
Japan	9	3	127
Hongkong	23	6	264
Vietnam	500	415	17,814
Others	5	6	273
3. Flour, meals & pellets of fish, crustaceans & molluscs			
fit or unfit for human consumpl	8,055	6,408	275,025
Peru	371	516	22,127
U S A	817	519	22,279
Thailand	616	627	26,920
Denmark	220	442	18,979
China, People's Rep. of	360	11	471
France	150	437	18,750
Taiwan	402	173	7,416
Germany	2,336	1,230	52,806
Vietnam	200	243	10,409
Korea, South	2,334	1,525	65,435
Sweden	25	16	687
Others	224	670	28,745
Total major imports	76,132	100,571	4,316,498
Other Commodities	185,989	199,044	8,542,985
Grand Total	262,121	299,615	12,859,484

2. Major Fishery Imports in Terms of Value, 2013

Commodity/Kind	Quantity (MT)	CIF Value	
		('000 \$)	('000 Pesos)
1. Chilled/Frozen Fish	167,239	150,868	6,475,256
A. Tuna	65,061	90,922	3,902,388
Indonesia	280	461	19,776
Taiwan	17,029	30,607	1,313,664
Papua New Guinea	17,460	22,689	973,797
Japan	3,673	7,418	318,385
Korea	2,490	5,220	224,028
Singapore	5,499	8,012	343,879
China, People'S Rep. of	11,004	4,993	214,319
Marshall Islands	641	1,452	62,307
Vietnam	3,963	3,595	154,280
Others	3,022	6,476	277,954
B. Mackerel	73,871	44,185	1,896,436
China, People'S Rep. of	54,033	25,996	1,115,761
Japan	10,842	11,242	482,492
Taiwan	704	367	15,736
Korea	1,749	1,141	48,950
New Zealand	132	275	11,821
U S A	401	315	13,513
Vietnam	5,401	4,396	188,671
Others	609	454	19,491
C. Sardines	28,307	15,760	676,432
India	6,784	3,646	156,505
U S A	114	90	3,865
China, People'S Republic of	20,350	11,037	473,691
Japan	919	834	35,776
Others	140	154	6,596

I. FISHERY RESOURCES

A. Marine Resources

1. Total Territorial Water Area (including the EEZ)	2,200,000 sq km
a. Coastal	266,000 sq km
b. Oceanic	1,934,000 sq km
2. Shelf Area (Depth 200 m)	184,600 sq km
3. Coral Reef Area	27,000 sq km (Within the 10-20 fathoms where reef fisheries occur)
4. Coastline (length) ^{1/}	36,289 km

B. Inland Resources

1. Swamplands	246,063 ha
a. Freshwater	106,328 ha
b. Brackishwater ^{1/}	139,735 ha
2. Existing Fishpond	253,854 ha
a. Freshwater	14,531 ha
b. Brackishwater ^{2/}	239,323 ha
3. Other Inland Resources	250,000 ha
a. Lakes	200,000 ha
b. Rivers	31,000 ha
c. Reservoirs	19,000 ha

II. FISHERIES CONTRIBUTION TO THE ECONOMY, 2013

A. Fisheries Contribution to Total GDP ^{3/}

1. At Current Prices	1.7%
2. At Constant Prices	1.9%

B. Fisheries Contribution to GVA in Agriculture, Hunting, Forestry and Fishing by Industry Group ^{3/}

Industry Group	At Current Prices (P M)	% to Agricultural Sector	At Constant Prices (P M)	% to Agricultural Sector
1. Agricultural crops (Palay, corn, coconut ,etc)	721,814	55.7	347,622	49.2
2. Livestock	167,019	12.9	94,915	13.4
3. Poultry	117,922	9.1	77,682	11.0
4. Agricultural activities	85,994	6.6	50,137	7.1
6. Forestry	4,756	0.4	5,261	0.7
5. Fishing	199,320	15.4	131,003	18.5
Total	1,296,824	100	706,619	100.0

Note: GDP at current and constant 2000 prices

B. IMPORTS ^{5/}

1. Import of Fish and Fishery Products By Kind, Quantity and Value, 2013

Commodity/Kind	Quantity (MT)	CIF Value	
		('000 \$)	('000 Pesos)
● Fish Crustaceans, Mollusks, etc. and Preparation	228,569	244,375	10,488,585
a. Fish fresh (live or dead) chilled or frozen	202,888	206,313	8,854,968
b. Fish, dried, salted or in brine, smoked fish	80	72	3,094
c. Crustaceans, mollusks and aquatic invertebrates	23,712	35,305	1,515,281
d. Fish and other aquatic invertebrate, prepared/ preserved	1,888	2,685	115,243
● Shells and By-Products	850	244	10,478
● Miscellaneous and Other Fishery Products	32,702	54,996	2,360,421
Grand Total	262,121	299,615	12,859,484

Note: Figures may not add up due to rounding off

Major Fisheries Export in Terms of Value, 2013

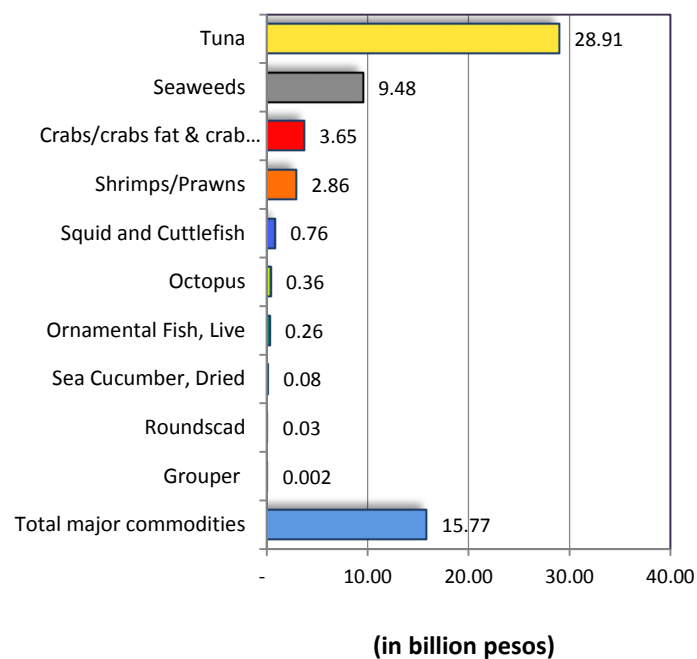


Figure 5

C. Employment ^{4/}

Preliminary Data on the Number of Fishing Operators by Sector, 2002 *

1. Aquaculture	226,195 operators
2. Municipal	1,371,676 operators
3. Commercial	16,497 operators
Total	1,614,368 operators

* Based on 2002 Census of Fisheries

D. Balance of Trade ^{5/}

	2013			2012		
	Quantity (MT)	FOB Value (P M)	FOB Value (\$ M)	Quantity (MT)	FOB Value (P M)	FOB Value (\$ M)
Fishery Exports	333,465	58,801	1,386	165,324	42,370	1,010
Fishery Imports	262,121	12,859	300	280,922	12,298	290
Trade Balance	71,344	45,942	1,086	(115,598)	30,072	720

E. Total Fish Production, by Sector, 2013

Sector	Quantity (MT)	%	Value Current Prices ('000 P)	%
1. Aquaculture	2,373,386.49	50.4	93,731,169.92	38.3
2. Municipal Fisheries	1,264,416.48	26.9	80,897,993.14	33.1
3. Commercial Fisheries	1,067,610.33	22.7	69,922,512.01	28.6
Total	4,705,413.30	100.0	244,551,675.07	100.0

4. Fishery Exports, by Major Country of Destination in Terms of Value, 2013

Country/Destination	Quantity (MT)	FOB Value	
		('000 \$)	('000 Pesos)
United States Of America	79,625	350,672	14,875,521
Japan (Excludes Okinawa)	30,568	185,756	7,879,758
Germany	24,394	99,248	4,210,115
Hongkong	20,132	82,404	3,495,570
Uk Great Britain And N. Ireland	23,551	83,781	3,553,974
Spain	14,174	62,675	2,658,655
France	2,476	9,802	415,806
Taiwan (Republic Of China)	9,749	31,873	1,352,047
Canada	4,252	16,825	713,698
China, People'S Republic Of	35,020	42,676	1,810,305
Belgium	4,158	24,799	1,051,983
Indonesia	358	3,558	150,934
Italy	13,066	67,187	2,850,081
Singapore	3,349	14,980	635,435
Thailand	9,831	45,186	1,916,789
Korea, Republic Of South	4,457	13,441	570,147
Denmark	1,436	12,243	519,361
United Arab Emirates	1,457	5,730	243,076
Papua New Guinea	2,894	4,559	193,398
Vietnam	1,512	6,363	269,900
Total Major Countries	286,460	1,163,757	49,366,554
Other Countries	47,005	222,401	9,434,242
Grand Total	333,465	1,386,157	58,800,796

Commodity/Kind	Quantity (MT)	FOB Value	
		('000 \$)	('000 Pesos)
3. Shrimps/Prawns	9,563	67,496	2,190,671
Frozen	6,239	47,537	2,016,505
Japan	2,923	22,415	950,852
U S A	2,114	16,767	711,237
Korea, Rep of South	395	3,443	146,062
Hongkong	25	104	4,398
Guam	65	390	16,551
Canada	102	664	28,153
Taiwan	32	75	3,174
France	277	2,360	100,126
Others	305	1,319	55,952
Fresh or chilled	448	3,075	130,447
U S A	142	716	30,367
China, People'S Republic Of	26	52	2,192
Taiwan	72	180	7,638
Japan	7	62	2,625
United Arab Emirates	175	1,902	80,671
Others	27	164	6,954
Other Than Fresh/Chilled or Frozen	22	120	5,094
United States Of America	10	31	1,319
Japan	7	86	3,646
Taiwan	5	3	129
Prepared and Preserved	381	911	38,624
Thailand	8	68	2,892
U S A	114	230	9,745
Netherlands	113	271	11,516
Others	146	341	14,471
Total (3) major commodities	231,131	967,767	38,573,899
Total other commodities	102,334	418,391	20,226,897
Grand Total	333,465	1,386,157	58,800,796

a/ Volume less than 1 metric ton

Total Fish Production, By Sector, 2013

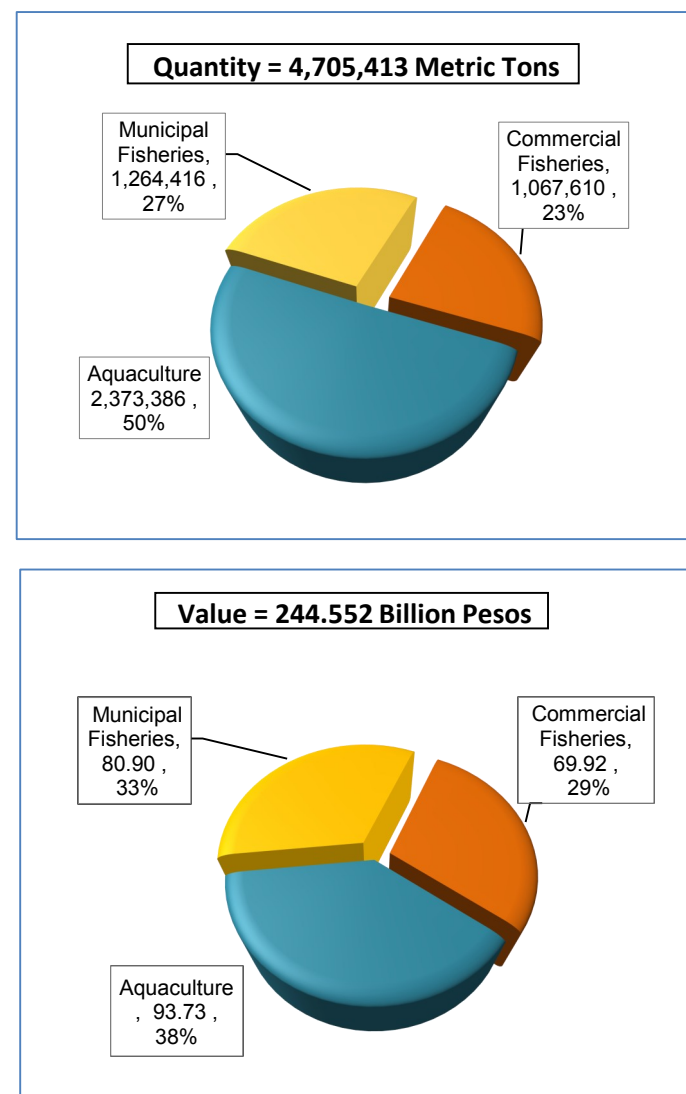


Figure 2

F. Fish Production, by Sector and Region, 2013
in (MT)

Region	Commercial	Municipal	Aquaculture	Total	% share to total
NCR	116,079.48	5,239.83	2,616.92	123,936.23	2.6
CAR	-	1,114.46	2,792.95	3,907.41	0.1
I	2,787.75	32,821.31	120,061.36	155,670.42	3.3
II	11,513.76	34,062.28	16,306.03	61,882.07	1.3
III	3,342.83	40,685.52	225,532.16	269,560.51	5.7
IV-A	66,162.09	128,798.44	213,142.23	408,102.76	8.7
IV-B	43,877.35	160,158.46	346,722.81	550,758.62	11.7
V	70,565.76	149,694.87	80,056.73	300,317.36	6.4
VI	91,553.95	155,723.52	171,983.01	419,260.48	8.9
VII	40,379.36	52,113.00	134,138.17	226,630.53	4.8
VIII	41,928.04	85,152.62	45,682.36	172,763.02	3.7
IX	208,017.02	129,028.53	237,539.16	574,584.71	12.2
X	36,609.86	42,865.18	76,802.48	156,277.52	3.3
XI	15,929.92	19,490.00	34,675.28	70,095.20	1.5
XII	218,389.80	46,206.54	22,461.46	287,057.80	6.1
CARAGA	5,165.36	59,477.54	23,397.74	88,040.64	1.9
ARMM	95,308.00	121,784.38	619,475.63	836,568.01	17.8
Total	1,067,610.33	1,264,416.48	2,373,386.48	4,705,413.29	100.00

Note: For Aquaculture, Figures may not add up to the totals due to rounding off.

Commodity/Kind	Quantity (MT)	FOB Value	
		('000 \$)	('000 Pesos)
2. Seaweeds	55,810	218,652	9,275,227
Seaweeds and Other Algae, Fresh, Chilled or Dried	6,637	17,388	737,579
China, People'S Republic Of	490	494	20,975
France	210	327	13,856
USA	2,966	1,374	58,277
Spain	2,460	13,964	592,360
Hongkong	55	447	18,949
Others	456	782	33,162
Other Seaweeds, Frozen	13,056	2,090	88,675
USA	70	184	7,788
China, People'S Republic Of	12,579	1,480	62,794
Japan	181	112	4,748
Korea, Republic Of South	112	67	2,826
Others	115	248	10,518
Carrageenan (Semi-Refined & Refined)	20,728	173,909	7,377,201
USA	6,617	47,467	2,013,529
Uk Great Britain And N. Ireland	1,217	4,811	204,070
Belgium	1,539	12,483	529,532
Germany	749	5,491	232,933
France	340	2,814	119,362
Thailand	916	8,583	364,089
Mexico	1,540	10,137	430,031
Australia	708	5,700	241,802
Brazil	473	3,114	132,117
China, People'S Republic Of	359	3,255	138,069
Others	6,270	70,053	2,971,667
Kelp Powder	114	73	3,098
Japan	114	73	3,098

3. Major Destination of Top Three Fishery Exports by Kind, Quantity and Value, 2013

Commodity/Kind	Quantity (MT)	FOB Value	
		('000 \$)	('000 Pesos)
1. Tuna	165,757	681,618	28,914,254
Fresh/chilled/frozen	29,532	120,480	5,110,754
Japan	5,279	38,007	1,612,262
U S A	2,352	14,413	611,381
Indonesia	45	61	2,593
Thailand	4,060	10,289	436,460
Hongkong	817	6,273	266,100
France	1,149	3,968	168,334
Taiwan	16	7	309
Uk Great Britain And N. Ireland	18	106	4,505
Germany	207	1,013	42,960
Vietnam	23	44	1,881
Others	15,568	46,298	1,963,968
Prepared/Preserved	136,202	561,005	23,797,814
U S A	39,735	128,823	5,464,676
Canada	1,658	7,621	323,293
Japan	12,065	66,841	2,835,382
South Africa	167	662	28,080
Germany	23,263	92,471	3,922,638
Taiwan	104	254	10,770
United Kingdom	19,120	77,861	3,302,850
Netherlands	4,109	14,898	631,964
Malaysia	114	466	19,750
Others	35,868	171,108	7,258,412
Dried/Smoked	23	134	5,687
Japan	23	134	5,687

F.a. Value of Fish Production, by Sector and Region, 2013 (in '000 P)

Region	Commercial	Municipal	Aquaculture	Total	% share to total
NCR	7,433,755.5	428,863.2	142,982.1	8,005,600.83	3.3
CAR	-	109,202.1	267,160.2	376,362.29	0.2
I	234,692.2	2,799,480.2	11,293,753.5	14,327,925.94	5.9
II	852,207.5	2,645,672.9	1,369,068.0	4,866,948.41	2.0
III	232,950.2	3,191,370.3	27,020,783.5	30,445,103.97	12.4
IV-A	5,846,159.7	5,099,073.1	11,418,860.5	22,364,093.24	9.1
IV-B	2,006,792.5	8,665,857.6	3,910,552.4	14,583,202.46	6.0
V	3,655,158.3	9,218,577.5	2,647,774.8	15,521,510.56	6.3
VI	7,374,551.2	12,009,614.9	9,088,890.9	28,473,057.03	11.6
VII	2,662,856.4	3,811,832.7	1,601,860.8	8,076,549.84	3.3
VIII	2,910,446.8	6,568,467.9	2,312,980.1	11,791,894.82	4.8
IX	8,507,028.8	6,815,701.9	4,318,812.1	19,641,542.77	8.0
X	2,169,304.8	3,124,371.5	8,446,231.1	13,739,907.38	5.6
XI	1,635,523.0	1,758,364.2	2,681,313.3	6,075,200.53	2.5
XII	20,616,173.8	3,122,020.3	1,867,325.0	25,605,519.11	10.5
CARAGA	380,280.0	4,432,986.7	702,143.0	5,515,409.73	2.3
ARMM	3,404,631.3	7,096,536.0	4,640,678.8	15,141,846.16	6.2
Total	69,922,512.01	80,897,993.14	93,731,169.92	244,551,675.07	100.00

G. Fish Production, by Sector 2004-2013

1. Volume of Fish Production (in MT)

Year	Aquaculture	Municipal	Commercial	Total
2013	2,373,386.5	1,264,416.5	1,067,610.3	4,705,413.3
2012	2,541,965.4	1,280,849.0	1,042,317.9	4,865,132.3
2011	2,608,119.8	1,332,647.8	1,032,820.1	4,973,587.8
2010	2,545,967.1	1,371,389.8	1,242,101.8	5,159,458.7
2009	2,477,392.0	1,348,644.0	1,253,941.0	5,079,977.0
2008	2,407,697.9	1,332,986.4	1,226,204.9	4,966,889.2
2007	2,214,826.2	1,304,356.5	1,192,069.8	4,711,252.4
2006	2,092,275.8	1,235,528.8	1,080,667.7	4,408,472.3
2005	1,895,847.3	1,132,046.3	1,133,976.2	4,161,869.8
2004	1,717,026.7	1,080,764.3	1,128,382.4	3,926,173.4

2. Value of Fish Production (in '000 P)

Year	Aquaculture	Municipal	Commercial	Total
2013	93,731,169.9	80,897,993.1	69,922,512.0	244,551,675.1
2012	92,289,924.7	79,527,365.5	65,894,183.8	237,711,474.0
2011	85,996,428.0	80,075,629.8	58,623,021.0	224,695,078.9
2010	82,857,454.5	77,736,463.7	60,456,931.3	221,050,849.5
2009	81,493,357.5	75,383,741.5	58,704,969.4	215,582,068.3
2008	81,669,480.6	70,973,918.9	63,170,103.2	215,813,502.7
2007	61,597,274.2	64,210,385.6	54,737,468.3	180,545,128.2
2006	55,671,892.8	59,146,569.7	48,555,921.0	163,374,383.5
2005	49,169,787.9	49,950,423.5	47,272,737.5	146,392,948.9
2004	44,822,257.0	45,674,851.6	48,349,268.7	138,846,377.3

2. Major Fishery Exports in Terms of Value, 2013

Commodity/Kind	Quantity MT	FOB Value	
		('000 \$)	('000 Pesos)
1. Tuna	165,757	681,618	28,914,254
Fresh/chilled/frozen (excludes fillet)	29,532	120,480	5,110,754
Smoked	23	134	5,687
Prepared/preserved	136,202	561,005	23,797,814
2. Seaweeds	55,810	218,652	9,275,227
Seaweeds and other Algae, nes.	22,495	39,475	1,674,541
Seaweeds for human consumption	12,587	5,268	223,485
Carrageenan	20,728	173,909	7,377,201
3. Shrimps/Prawns	9,563	67,496	2,863,185
Fresh/ chilled or frozen, nes	6,688	50,612	2,146,952
Dried	2,130	15,468	656,153
Prepared and preserved	745	1,416	60,079
4. Crabs/crabs fat & crab meat	13,886	85,955	3,646,225
Live, Frozen/Fresh or Chilled	11,579	48,884	2,073,655
Crab fat (Prepared/presrd)	812	11,058	469,088
Crab meat (Prepared/presrd)	1,495	26,013	1,103,482
5. Octopus	1,946	8,398	356,231
Live, Fresh or chilled	6	12	514
Dried, salted or in brine	0.4	1	42
Frozen	1,940	8,385	355,674
6. Grouper	11	38	1,611
For breeding, live	-	-	-
Breeder	11	38	1,611
Other than for breeding			
7. Squid and Cuttlefish	3,999	17,908	759,671
Dried, salted or in brine	7	56.49	2,396
Fresh/chilled/frozen	3,758	16,642.64	705,981
Prepared/preserved	234	1,209.19	51,294
8. Ornamental Fish, Live	5,895	6,151.59	260,950
9. Roundscad	191	790	33,523
Frozen	170	725.39	30,771
Smoked	18	47.93	2,033
Dried	3	16.94	719
10. Sea Cucumber, Dried	149	1,849.23	78,444
Total major commodities	257,209	1,088,857	46,189,320
Total of other commodities	76,256	297,300	12,611,476
Grand Total	333,465	1,386,157	58,800,796

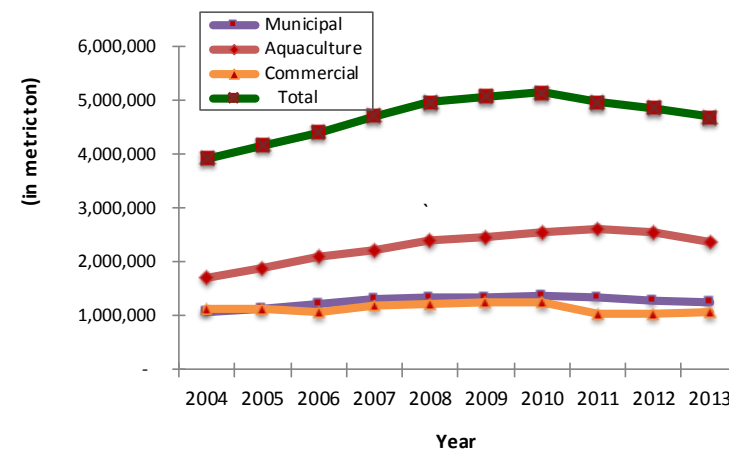
a/ - volume less than 1 metric ton

A. EXPORTS ^{5/}

1. Export of Fish and Fishery Products by Kind, Quantity and Value, 2013

Commodity/Kind	Quantity MT	FOB Value	
		('000 \$)	('000 Pesos)
A. Fish, Crustaceans, Molluscs, etc. and Preparation	266,078	1,156,964	49,078,418
A.1 Fish, fresh (live/dead), Chilled/Frozen	73,828	299,066	12,686,388
A.2 Fish, dried, salted/in brine; smoked fish	4,082	18,904	801,907
A.3 Crustaceans, molluscs and aquatic invertebrates, chilled/frozen	30,280	160,034	6,788,627
A.4 Fish and other aquatic invertebrate, prepared/ preserved	157,887	678,960	28,801,495
B. Shells and by-products	5,273	8,090	343,173
C. Miscellaneous fishery products and other by-products/fishery products	62,114	221,103	9,379,206
Grand Total	333,465	1,386,157	58,800,796

Volume of Fish Production, By Sector 2004-2013



Value of Fish Production, By Sector 2004-2013

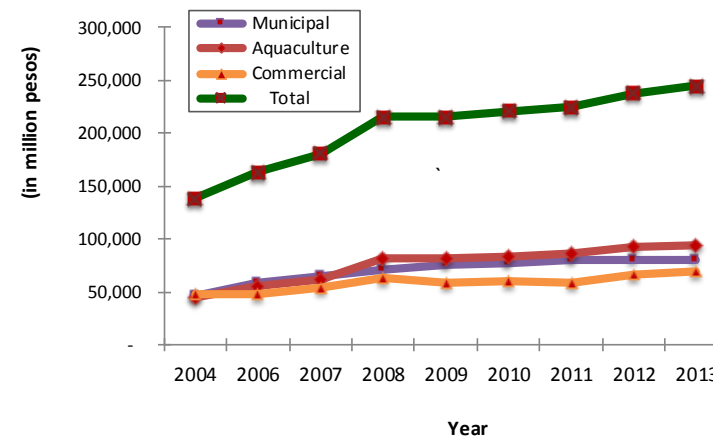


Figure 3

H. Five Year Fish Production, Trend 2009-2013

Year	Quantity (MT)	% Increase/ (Decrease)	Value ('000 P)	% Increase/ (Decrease)
2013	4,705,413	(3.3)	244,551,675	2.9
2012	4,865,132	(2.2)	237,711,474	5.8
2011	4,973,588	(3.6)	224,695,079	1.6
2010	5,159,459	1.6	221,050,850	2.5
2009	5,079,977	2.3	215,582,068	(0.1)

Five Year Fish Production, Trend 2009-2013

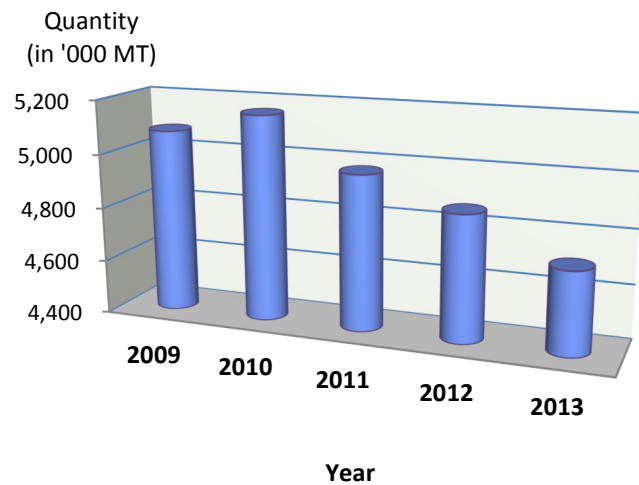
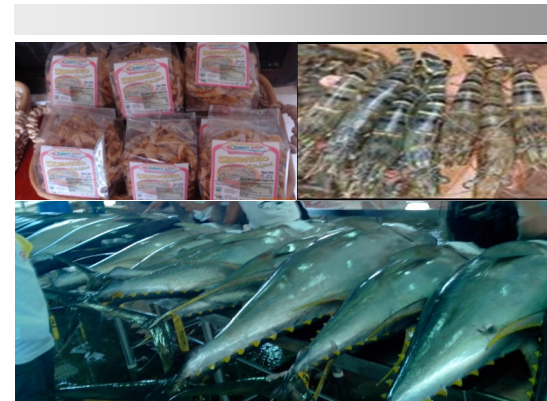


Figure 4

External Trade



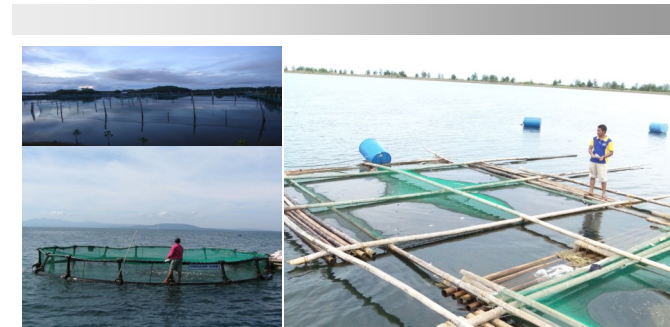
**NUMBER OF COMMERCIAL FISHING OPERATORS
AND VESSELS, BY REGION, AS OF 2007 ^{9/}**

Region	No. of Operators	No. of Vessels
NCR	138	758
CAR	4	6
I	36	74
II	68	111
III	50	137
IV-A	153	226
IV-B	259	455
V	248	387
VI	238	667
VII	278	565
VIII	240	350
IX	100	454
X	93	136
XI	89	269
XII	323	1717
CARAGA	31	41
ARMM	10	18
TOTAL	2,358	6,371

Aquaculture Production, 2013

This includes production from the following:

- *Brackishwater fishpond*
- *Freshwater fishpond*
- *Fish pen and fish cage in fresh and marine waters*
- *Mariculture of oyster, mussel and seaweeds*



A. SUMMARY OF AQUACULTURE PRODUCTION BY CULTURE ENVIRONMENT AND REGION, 2013
(In Metric Tons)

Region	Total Aquaculture	Brackishwater			Freshwater			Marine Waters			Oyster Mussel and Seaweed	S FR	Rice Fish
		Fish-pond	Fish cage	Fish pen	Total	Fish cage	Fish pen	Total	Fish cage	Fish pen			
NCR	2,617	654.4			654	503.8	1211.6	1,715			247		
CAR	2,793				2,793	936.9		2,793			-		
I	120,061	23,865.3	123.6	858.2	24,847	8511.4	15.0	8,526	72,149	12,112	2,418	6.5	2.53
II	16,306	4,027.3	127.7		4,155	8679.8	339.0	9,019	0	-	3,022	109.7	
III	225,532	94,363.2			94,363	117574.7	31.9	117,607	5,679	-	7,874	9.1	
IV-A	213,142	18,120.2			18,120	1056.9	93910.1	49528.4	48	-	50,479		
IV-B	346,723	4,869.2			4,869	685.7		686	477	-	340,691		
V	80,057	8,838.3			8,838	1872.4	7818.37	9,691	32	122	61,374		
VI	171,983	84,590.2	10.3	40.0	84,640	2035.6	0	2,036	192	216	84,897	0.4	0.94
VII	134,138	8,110.8	1.5	0.2	8,113	128.2	8.5	137	778	36	125,063	11.7	
VIII	45,682	8,819.7	56.6	13.9	8,890	256.9	65.9	330	3,458	22	32,982		
IX	237,539	18,334.6	0.6		18,335	120.1	0.0	125	91	-	218,988		
X	76,803	31,554.7			31,555	1053.1	2.6	1,056	1,928	-	42,262	2.0	
XI	34,675	4,368.4	38.7	0.0	4,407	2923.5	3.3	2,931	13,623	9,732	3,982		
XII	22,461	9,092.9			9,093	1024.4	1396.9	8111.5	2,776	0	21	38.8	
CARAGA	23,398	2,317.4	672.3	3.5	2,993	145.1	33.4	182	338	8	19,877		
ARMM	619,476	3,537.1			3,537	207.9	254.9	6,768	4	2	609,165		
TOTAL	2,373,386.5	325,463.7	1031.3	915.8	327,411	148,131.7	105,320.6	65,176.6	101,572.1	22,251.4	1,603,342	178.2	3.5

Note: Figures may not add up to the total due to rounding off.

B. COMMERCIAL FISHERIES PRODUCTION, BY MAJOR FISH SPECIES, 2013

Major Species	Total (MT)	% to Total
1. Roundscad (Galunggong)	200,393.45	18.8
2. Indian Sardines (Tamban)	158,840.98	14.9
3. Frigate Tuna (Tulingan)	73,647.23	6.9
4. Skipjack (Gulyasan)	171,261.14	16.0
5. Yellowfin Tuna (Tambakol/Bariles)	83,394.40	7.8
6. Big-eyed Scad (Matang-baka)	47,116.85	4.4
7. Fimbriated Sardines (Tunsoy)	47,780.30	4.5
8. Slipmouth (Sapsap)	15,052.42	1.4
9. Eastern Little Tuna (Bonito)	22,178.89	2.1
10. Indian Mackerel (Alumahan)	41,205.87	3.9
11. Indo-pacific Mackerel (Hasa-hasa)	14,419.78	1.4
12. Other Species	192,319.02	18.0
Total	1,067,610	100.0

A. COMMERCIAL FISH PRODUCTION, BY REGION AND BY TYPE OF LANDING CENTERS, 2013 (in MT)

Region	Total	Private	PFDA	LGU	Traditional
NCR	116,079.48	-	112,808.93	0	3,270.55
CAR	-				
I	2,787.75	-	714.60	-	2,073.15
II	11,513.76	-	-	-	11,513.76
III	3,342.83	2,618.58	-	98.04	626.21
IV-A	66,162.09	1,028.40	7,224.92	7,575.42	50,333.35
IV-B	43,877.35	-	-	-	43,877.35
V	70,565.76	10,417.00	-	20,150.61	39,998.15
VI	91,553.95	3,600.99	3,626.73	17,163.23	67,163.00
VII	40,379.36	5,131.96	-	3,987.17	31,260.23
VIII	41,928.04	1,171.29	-	119.06	40,637.69
IX	208,017.02	138,341.82	4,861.19	31,664.62	33,149.39
X	36,609.86	-	-	7,726.68	28,883.18
XI	15,929.92	2,055.87	4,329.72	7,812.22	1,732.11
XII	218,389.80	46,668.68	166,606.76	-	5,114.36
CARAGA	5,165.36	-	-	-	5,165.36
ARMM	95,308.00	-	-	-	95,308.00
TOTAL	1,067,610.33	211,034.59	300,172.85	96,297.05	460,105.84

B. AQUACULTURE PRODUCTION BY CULTURE ENVIRONMENT, BY REGION AND SPECIES, 2013

1. Production from Brackishwater (in MT)

a) Fishpond

Region	Total	Milkfish	Tiger Prawn	W. Shrimp & Endeavor Prawn	Tilapia	Mudcrab	Grouper	Siganid	Others
NCR	654.36	288.35	..	0.03	365.98
CAR
I	23,865.34	19,207.54	1,510.95	94.75	2,501.72	8.75	..	50.65	490.98
II	4,027.31	514.52	46.84	152.24	2,245.33	52.52	0.44	18.30	997.12
III	94,363.14	56,720.09	24,830.28	479.35	6,432.09	4,096.46	5.70	..	1,799.17
IV-A	18,120.23	16,976.55	256.83	232.01	..	25.04	16.04	..	613.76
IV-B	4,869.20	4,409.83	425.07	..	0.04	5.86	28.40
V	8,838.25	5,256.39	1,602.34	334.39	290.44	1,352.32	..	0.23	2.14
VI	84,590.22	79,507.74	2,094.92	205.19	882.11	1,689.29	4.15	..	206.82
VII	8,110.83	5,415.55	594.05	10.49	103.11	4.91	..	0.07	1,982.65
VIII	8,819.72	7,782.66	212.81	-	64.06	653.24	106.95
IX	18,334.59	12,014.94	4,081.31	799.27	1,161.44	277.63
X	31,554.71	10,544.43	13,074.89	63.74	428.41	7,408.98	..	0.44	33.82
XI	4,368.42	3,838.91	21.45	38.92	202.20	3.39	263.55
XII	9,092.89	7,916.45	2.19	0.13	397.67	0.58	775.87
CARAGA	2,317.37	1,145.79	454.79	86.49	12.89	131.66	485.75
ARMM	3,537.05	2,938.44	258.19	131.18	125.88	83.36
TOTAL	325,463.70	234,478.20	49,466.91	2,628.18	15,213.36	15,794.00	26.33	69.68	7,787.01

b) Fish cage

Region	Total	Milkfish	Tilapia	Grouper	Siganid	Others
NCR	
CAR	
I	123.64	35.25	38.4	2.73	46.56	0.7
II	127.74	21.57	78.02	1.93	25.24	0.98
III	0.00
IV-A	
IV-B	
V	
VI	10.25	9.49	0.07	0.69
VII	1.48	1.48
VIII	56.62	47.98	8.64
IX	0.64	0.21	..	0.43
X	
XI	38.72	38.72
XII	
CARAGA	672.26	671.86	0.4
ARMM	
TOTAL	1,031.34	816.86	116.82	14.36	71.86	11.44

Commercial Fisheries Production, 2013

*Fishing with the use of fishing vessels
more than 3 gross tons.*



**C. NUMBER OF MUNICIPAL FISHING BANCAS,
BY REGION, 2000 ^{8/}**

Region	Total	Motorized	Non-Motorized
CAR	660	49	611
I	17,678	11,641	6,037
II	3,304	1,502	1,802
III	27,038	18,375	8,663
IV	69,927	26,569	43,358
V	54,715	19,453	35,262
VI	41,808	16,234	25,574
VII	56,142	19,100	37,042
VIII	58,068	16,255	41,813
IX	45,650	13,280	32,370
X	9,041	2,472	6,569
XI	24,099	11,382	12,717
XII	10,759	2,671	8,088
XIII	31,283	11,202	20,081
ARMM	19,635	7,442	12,193
Total	469,807	177,627	292,180
Percent			
%	100	38	62

c) Fish pen

Region	Total	Milkfish	Siganid	Grouper	Tilapia	Others
NCR	
CAR	
I	858.23	815.95	1.28	..	40.66	0.34
II	
III	
IV-A	
IV-B	
V	
VI	39.99	39.63	0.36
VII		0.2	..
VIII	13.89	13.89
IX	
X	
XI	0.00
XII	
CARAGA	3.46	3.35	0.06	0.05
ARMM	
TOTAL	915.79	872.83	1.28	0.00	40.93	0.75

2. Production from Freshwater (in MT)

a) Fishpond

Region	Total	Tilapia	Milkfish	Carp	Catfish	Mudfish	Gourami	Fresh-water Prawn	Others
NCR	
CAR	1,856.03	1,853.31	..	0.34	0.94	1.44
I	8,511.39	8,431.32	3.02	16.17	15.24	41.09	4.28	a/	0.27
II	8,679.76	8,404.38	..	11.57	194.07	39.01	0.75	3.87	26.11
III	117,574.65	115,165.04	..	238.99	1,396.66	631.14	106.99	..	35.83
IV-A	1,056.90	921.84	..	0.15	129.27	1.34	..	1.52	2.78
IV-B	685.66	685.44	..	0.01	0.02	0.19
V	1,872.37	1,721.25	113.12	38.00
VI	2,035.61	1,032.88	1,000.61	0.14	..	0.16	1.82
VII	128.19	123.47	3.00	0.17	0.18	0.70	0.67
VIII	256.89	252.10	0.18	..	4.41	0.20	..
IX	120.05	66.71	..	1.54	6.06	45.74
X	1,053.12	893.20	..	94.00	18.41	47.38	0.12	..	0.01
XI	2,923.52	2,459.79	..	11.25	413.31	31.67	1.89	..	5.61
XII	1,024.44	625.98	..	1.11	327.01	62.25	0.64	..	7.45
CARAGA	145.13	142.23	0.23	0.99	0.08	1.60	-
ARMM	207.94	73.31	134.63
TOTAL	148,131.65	142,852.24	6.43	376.30	3,754.02	902.26	114.66	5.75	119.99

B. MARINE MUNICIPAL FISH CATCH, BY MAJOR FISH SPECIES, 2013

Major Species	Total (MT)	% to Total
Frigate Tuna (Tulingan)	60,590.00	5.7
Big-eyed Scad (Matang-baka)	69,944.29	6.6
Roundscad (Galunggong)	70,415.36	6.6
Indian Sardines (Tamban)	70,393.90	6.6
Indian Mackerel (Alumahan)	44,040.26	4.1
Anchovies (Dilis)	44,744.76	4.2
Yellowfin tuna (Tambakol)	46,749.94	4.4
Squid (Pusit)	42,662.63	4.0
Fimbriated Sardines (Tunsoy)	41,355.97	3.9
Slipmouth (Sapsap)	35,737.61	3.4
Others	535,512.91	50.4
Total	1,062,147.63	100.0

**A. MUNICIPAL FISHERIES PRODUCTION, BY REGION, 2013
(in MT)**

Region	Marine	Inland	Total
NCR	5,239.83	..	5,239.83
CAR	..	1,114.46	1,114.46
I	31,052.98	1,768.33	32,821.31
II	19,827.45	14,234.83	34,062.28
III	27,565.61	13,119.91	40,685.52
IV-A	35,817.41	92,981.03	128,798.44
IV-B	159,167.89	990.57	160,158.46
V	143,293.17	6,401.70	149,694.87
VI	148,053.11	7,670.41	155,723.52
VII	51,938.36	174.64	52,113.00
VIII	84,265.01	887.61	85,152.62
IX	128,095.57	932.96	129,028.53
X	38,546.04	4,319.14	42,865.18
XI	19,171.16	318.84	19,490.00
XII	21,312.42	24,894.12	46,206.54
CARAGA	55,062.93	4,414.61	59,477.54
ARMM	93,738.69	28,045.69	121,784.38
TOTAL	1,062,147.63	202,268.85	1,264,416.48

b) Fish cage

Region	Total	Tilapia	Milkfish	Carp	Catfish	Others
NCR	503.81	413.73	..	90.08
CAR	936.91	936.91
I	14.95	14.95	0	..
II	339.04	338.58	0.46
III	31.87	31.87
IV-A	93,910.05	77,292.67	14,897.18	1,720.2
IV-B	0.00
V	7,818.37	7,805.43	..	12.94
VI	0.00
VII	8.50	8.41	0.09
VIII	65.94	65.94
IX	0.00
X	2.60	2.6
XI	3.32	3.32
XII	1,396.85	1,394.45	0.14	2.26
CARAGA	33.40	33.4
ARMM	254.94	194.48	60.46
TOTAL	105,320.55	88,536.74	14,957.73	1,823.22	0.14	2.72

c) Fish pen

Region	Total	Tilapia	Milkfish	Carp	Catfish	Others
NCR	1,211.55	..	1,211.55
CAR	-
I	0.07	0.07
II	-
III	-
IV-A	49,528.43	12,809.70	20,666.86	16,051.87
IV-B	-
V	-
VI	-
VII	0.15	0.15
VIII	7.12	7.12
IX	4.87	1.44	3.43
X	-
XI	3.88	3.75	0.13	..
XII	8,111.45	4,047.06	4,064.39
CARAGA	3.50	3.50
ARMM	6,305.62	5,032.00	1,273.62
TOTAL	65,176.63	21,904.78	27,216.42	16,051.87	0.13	3.43

d) Small-farm Reservoir

Region	Total	Tilapia	Milkfish	Carp	Catfish	Gourami	Mudfish	Shrimp		Others
								(Ulang)	White Shrimps	
I	6.54	4.96	-	0.04	1.39	0.05	0.09			0.01
II	54.78	38.65		5.46	3.87	1.02	4.85	0.62	0.01	0.3
III	63.96	63.96								
VI	0.41	0.37			0.04			-		
VII	11.65	10.99		0.28	0.14		0.24			
X	2.01	1.99					0.02			
XII	38.82	30.56		1.38	1.45	1.49	3.94			
TOTAL	178.15	151.48	0.00	7.16	6.88	2.56	9.13	0.62	0.01	0.31

e) Rice Fish

Region	Total	Tilapia	Carp	Catfish	Gourami	Mudfish	Others
I	2.53	1.34	0.13	0.13	0.55	0.18	0.20
III	0.00						
VI	0.94	0.94					
VIII							
XI							
TOTAL	3.47	2.28	0.13	0.13	0.55	0.18	0.20

Municipal Fisheries Production, 2013

This includes fishing done in coastal and inland waters with or without the use of boats of 3 gross tons or less



E. AREA AND LOCATION OF MAJOR LAKES IN THE PHILIPPINES ^{7/}

Rank	Name of Lakes	Area (HA)	Location
1	Laguna de Bay	90,000	Laguna & Rizal
2	Lanao	34,700	Marawi City, Lanao del Sur
3	Taal	23,400	Batangas
4	Mainit	14,000	Agusan del Norte & Surigao del Norte
5	Naujan	11,000	Mindoro Oriental
6	Buluan	6,500	Sultan Kudarat & Maguindanao
7	Bato	3,800	Iriga City, Camarines Sur
8	Buhi	1,800	Iriga City, Camarines Sur
9	Dapao	1,000	Ganassi, Lanao del Sur
10	Sebu	964	South Cotabato
11	Wood	792	Pagadian City, Zamboanga del Sur
12	Manguao	643	Taytay, Palawan
13	Baao	600	Baao, Camarines Sur
14	Paoay	420	Ilocos Norte
15	Maughan	314	Gen. Santos City, South Cotabato
16	Danao	260	Camotes Island, Cebu
17	Pagusi	253	Santiago, Agusan del Norte
18	Pinamaloy	252	Maramag, Bukidnon
19	Balut	206	Parang, Maguindanao
20	Imelda/Danao	197	Ormoc City, Leyte
21	Bito	150	Tacloban City, Leyte
22	Nunungan	148	Ganassi, Lanao del Norte
23	Sampaloc	102	San Pablo City, Laguna

**Only those with an area greater than 100 hectares are listed.*

Source: *Directory of Philippine Wetlands, Volume II*
Published by Asian Wetland Bureau Philippines Foundation Inc. (DENR Library)

3. Production from Marine Waters (in MT)

a) Fish cage

Region	Total	Milkfish	Groupers	Siganid	Snapper	Cavalla	Mud crab	Spiny lobster	Tiger Prawn	Tilapia	Others
NCR
CAR
I	72,148.93	72,134.14	..	0.93	0.94	12.92	..
II	0.38	0.28	0.10
III	5,679.15	5,674.80	4.35	..
IV-A	48.03	46.23	0.72	..	0.18	0.08	0.82	..
IV-B	476.41	392.00	84.35	0.06	0.02
V	31.77	0.72	17.17	0.13	..	13.73
VI	192.12	70.69	101.24	..	18.74	1.45	2.79	..
VII	778.39	763.20	6.12	2.60	3.68
VIII	3,457.78	3,077.14	380.64
IX	90.60	0.52	89.83	0.25
X	1,928.33	1,926.63	0.46	1.24
XI	13,622.61	13,567.63	0.07	52.57	0.03	0.09	0.05	2.17	..
XII	2,776.42	2,508.56	0.25	..	0.67	266.94	..
CARAGA	337.74	315.63	9.19	4.41	8.51
ARMM	3.51	3.51
TOTAL	101,572.13	100,477.88	690.03	62.46	23.56	19.53	0.05	8.53	0.10	289.99	..

b) Fish pen

Region	Total	Milkfish	Groupers	Siganid	Snapper	Cavalla	Spiny Lobster	Mudcr	Tilapia	Others
NCR		-	-				..
CAR	
I	12,111.99	12,111.98		0.01						..
II	-
III	-
IV-A	-
IV-B	-
V	122.22	122.22	
VI	216.38	216.38	
VII	35.66	34.57	0.81	0.20				0.02		0.06
VIII	22.49	22.49	
IX	-
X	-
XI	9,732.43	9,732.43	
XII	-
CARAGA	8.17	..	1.10	3.50			3.57			
ARMM	2.02		1.53	0.49			
TOTAL	22,251.35	22,240.07	1.91	3.71	-	1.53	4.05	0.02	-	0.06

**D. MAJOR SPECIES PRODUCED IN
AQUACULTURE FISHERIES, 2013**

Species	Quantity (MT)	Percent (%)
Seaweeds	1,558,377.74	65.66
Milkfish	401,066.40	16.90
Tilapia	268,818.73	11.33
Shrimps/Prawns	52,095.09	2.19
Others	93,028.53	3.92
Total	2,373,386.49	100.00

Seaweeds

Region	Total
NCR	..
CAR	..
I	58.16
II	2,423.86
III	1,596.50
IV-A	41,413.27
IV-B	340,691.28
V	61,089.90
VI	65,173.45
VII	124,247.38
VIII	27,884.62
IX	218,789.70
X	42,261.32
XI	3,686.46
XII	20.58
CARAGA	19,876.72
ARMM	609,164.54
TOTAL	1,558,377.74

4. Production from Mariculture (in MT)

Region	Total	Oyster	Mussels	Seaweeds
NCR	247.21	..	247.21	..
CAR	-
I	2,417.77	1,714.82	644.79	58.16
II	3,022.14	598.28	..	2,423.86
III	7,874.27	5,263.63	1,014.14	1,596.50
IV-A	50,478.87	1,941.19	7,124.41	41,413.27
IV-B	340,691.28	340,691.28
V	61,373.73	..	283.83	61,089.90
VI	84,897.10	11,199.41	8,524.24	65,173.45
VII	125,063.10	815.72	..	124,247.38
VIII	32,981.89	41.70	5,055.57	27,884.62
IX	218,988.41	198.71	..	218,789.70
X	42,261.74	0.42	..	42,261.32
XI	3,982.38	295.92	..	3,686.46
XII	20.58	20.58
CARAGA	19,876.72	19,876.72
ARMM	609,164.54	609,164.54
TOTAL	1,603,341.73	22,069.80	22,894.19	1,558,377.74

C. AQUACULTURE PRODUCTION OF MAJOR COMMODITIES BY CULTURE ENVIRONMENT AND BY REGION, 2013
(In Metric Tons)

Milkfish

Region	Total	Brackishwater		Freshwater		Marine		Small Farm Reservoir	
		Fishpond	Fish cage	Fishpond	Fish cage	Fish cage	Fish pen		
NCR	1,499.90	288.35	
CAR	-	
I	104,307.88	19,207.54	35.25	3.02	..	72,134.14	12,111.98	..	
II	536.09	514.52	21.57	
III	62,394.89	56,720.09	5,674.80	
IV-A	52,586.82	16,976.55	14,897.18	46.23	
IV-B	4,801.83	4,409.83	392.00	
V	5,379.33	5,256.39	0.72	122.22	..	
VI	79,834.44	79,507.74	..	39.63	..	70.69	216.38	..	
VII	6,217.89	5,415.55	1.48	..	3.00	0.09	763.20	34.57	
VIII	10,944.34	7,782.66	47.98	13.89	0.18	..	3,077.14	22.49	
IX	12,015.46	12,014.94	0.52	..	
X	12,471.06	10,544.43	1,926.63	..	
XI	27,177.69	3,838.91	38.72	13,567.63	9,732.43	
XII	14,489.40	7,916.45	4,064.39	2,508.56	..	
CARAGA	2,136.86	1,145.79	671.86	3.35	0.23	..	315.63	..	
ARMIM	4,272.52	2,938.44	..	-	..	60.46	1,273.62	..	
TOTAL	401,066.40	234,478.20	816.86	872.83	6.43	14,957.73	27,216.42	100,477.89	22,240.07

Tilapia

Region	Total	Brackishwater Fish		Freshwater		Small-farm Reservoir	Rice Fish pen	Marine Fish cage pen	
		Fishpond	Fish cage	Fishpond	Fish cage				
NCR	779.71	365.98	413.73	
CAR	2,790.22	1,853.31	936.91	
I	11,033.42	2,501.72	38.40	8,431.32	14.95	0.07	1.34	..	
II	11,159.95	2,245.33	78.02	8,404.38	338.58	..	93.54	0.10	
III	121,638.08	6,432.09	..	115,165.04	31.87	..	9.08	..	
IV-A	91,024.21	921.84	77,292.67	12,809.70	
IV-B	685.48	0.04	..	685.44	
V	9,817.12	290.44	..	1,721.25	7,805.43	
VI	1,916.30	882.11	..	1,032.88	0.37	0.94	
VII	246.33	103.11	..	123.47	8.41	0.15	10.99	..	
VIII	389.22	64.06	..	252.10	65.94	7.12	
IX	1,229.59	1,161.44	..	66.71	..	1.44	
X	1,326.20	428.41	..	893.20	2.60	..	1.99	..	
XI	2,669.06	202.20	..	2,459.79	3.32	3.75	
XII	6,495.72	397.67	..	625.98	1,394.45	4,047.06	30.56	..	
CARAGA	192.48	12.89	0.40	142.23	33.40	3.50	
ARMIM	5,425.67	125.88	..	73.31	194.48	5,032.00	
TOTAL	268,818.76	15,213.36	116.82	142,852.24	88,536.74	21,904.78	151.49	2.28	0.10