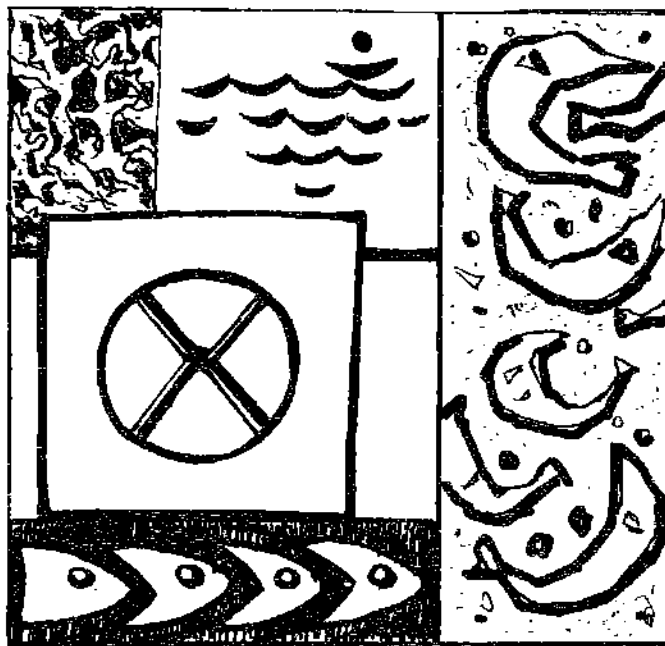


PHILIPPINE FISHERIES PROFILE, 2002



Republic of the Philippines
Department of Agriculture
BUREAU OF FISHERIES AND AQUATIC RESOURCES

The first part of the document discusses the importance of maintaining accurate records of all transactions. It emphasizes that every entry, no matter how small, should be recorded to ensure the integrity of the financial statements. This includes not only sales and purchases but also expenses and income. The document also highlights the need for regular reconciliation of bank statements and the company's records to identify any discrepancies early on.

In addition, the document provides a detailed breakdown of the accounting cycle, from identifying the accounting entity to preparing financial statements. It explains how each step contributes to the overall accuracy and reliability of the financial data. The document also includes a section on the classification of assets and liabilities, providing examples and explanations for each category.

The second part of the document focuses on the practical application of accounting principles. It includes a series of exercises designed to help students understand how to record transactions in the general ledger and how to prepare a trial balance. These exercises cover a wide range of scenarios, from simple sales and purchases to more complex transactions involving multiple accounts and adjustments.

Finally, the document concludes with a summary of the key concepts covered and a list of references for further study. It encourages students to continue to practice their accounting skills and to seek help if they have any questions. The document is intended to be a comprehensive resource for anyone studying accounting at the introductory level.

FOREWORD

The Bureau of Fisheries and Aquatic Resources (BFAR) publishes yearly the Philippine Fisheries Profile (PFP) based on the latest available data gathered from the different concerned agencies. This report aims to provide planners, decision-makers, researchers and other users with handy and concise information on Philippine fisheries.

The PFP focuses on the information/data on the Fisheries Contribution to the Philippine Economy, Employment, Fish Production (sector, sub-sector, region, major species), Export and Import Performance and Other Fishery Industry Information such as per capita food consumption, the Philippine contribution to total world production of fish and seaweeds, and the wholesale and retail prices of major commodities. Corresponding summary tables and graphs are also developed to further enhance the presentation of fisheries data and information.

We gratefully acknowledge the support and cooperation of the following agencies in making the data available to BFAR: Bureau of Agricultural Statistics (BAS), National Statistics Office (NSO), National Statistical Coordination Board (NSCB), Food and Nutrition Research Institute (FNRI) and Food and Agricultural Organization (FAO).

It is hoped that this reference material will serve its purpose to the fullest.


MALCOLM I. SARMIENTO, JR.
Director

...the ...

...the ...

...the ...

...the ...

...the ...

...the ...

...the ...

...the ...

...the ...

...the ...

...the ...

TABLE OF CONTENTS

FOREWORD	i
HIGHLIGHTS	ii
I. FISHERY RESOURCES	
A. Marine Resources	3
B. Inland Resources	3
II. FISHERIES CONTRIBUTION TO THE ECONOMY, 2002	
A. Fisheries Contribution to Total GDP	4
B. Fisheries Contribution to GVA Agricultural Sector	4
C. Employment	5
D. Balance of Trade	5
E. Total Fish Production, by Sector, 2002	6
F. Fish Production, by Sector and Region, 2002	7
G. Fish Production, by Sector, 1993 -2002	8
H. Five Year Fish Production, Trend 1998 -2002	9
III. AQUACULTURE PRODUCTION, 2002	
A. Summary of Aquaculture Production by Culture Environment and Region, 2002	14
B. Aquaculture Production, by Culture Environment, Region and Species, 2002	15
1. Production from Brackishwater Fishpond	15
2. Production from Freshwater Fishpond	17
3. Production from Marine Waters, 2002	19
4. Production from Mariculture, 2002	21
C. Major Species Produced in Aquaculture Fisheries, 2002	22
D. Ten Major Lakes of the Philippines	22

IV. MUNICIPAL FISHERIES PRODUCTION, 2002	
A. Municipal Fisheries Production, by Region, 2002	24
B. Marine Municipal Fish Catch, by Major Fish Species, 2002	25
C. Average Percentage Share of Marine Municipal Fisheries Production by Major Fishing Grounds, 1992-1995	26
D. Number of Municipal Fishing Bancas, by Region, 2000	27
V. COMMERCIAL FISHERIES PRODUCTION, 2002	
A. Commercial Fisheries Production, by Region and by Type of Landing Centers, 2002	30
B. Commercial Fisheries Production, by Major Fish Species, 2002	31
C. Average Percentage Share of Total Commercial Fish Production by Major Fishing Grounds, 1992-1995	32
D. Number of Commercial Fishing Vessels, by Region, 1999	33
VI. EXTERNAL TRADE	
A. Exports	
1. Exports of Fish and Fishery Products by Kind, Quantity and Value, 2002	36
2. Major Fishery Exports in Terms of Value, 2002	37
3. Major Destinations of Top Three Fishery Exports by Kind, Quantity and Value, 2002	39
4. Fishery Exports, by Major Country of Destination in Terms of Value, 2002	41
B. Imports	
1. Imports of Fish and Fishery Products by Kind, Quantity and Value, 2002	43
2. Major Fishery Imports in Terms of Value, 2002	44
3. Fishery Imports, By Major Country of Origin in Terms of Value, 2002	45

VII. OTHER FISHERIES INFORMATION

1. Comparison of Mean One-Day Per Capita Food Consumption: 1978, 1982, 1987 and 1993	48
2. Mean Per Capita Food Consumption, 1993	49
3. Mean One-Day Per Capita Food Consumption, 1993	50
A. Per Capita Food Consumption of Fish and Fishery Products, 1993	52
B. Productive Area in Aquaculture Fisheries, By Culture System and Region, 1995	53
C. World Fisheries Production of Fish, Crustaceans, Molluscs and Aquatic Plants (includes seaweeds), by Capture and Aquaculture, by Major Producers, 2000	54
D. World Aquaculture Production of Fish, Crustaceans, Molluscs, etc. by Principal Producers, 2000	55
E. World Aquaculture Production of Aquatic Plants (Includes Seaweeds) by Principal Producers, 2002	56
F. Prices of Selected Fish Species, Philippines, 2002	57

LIST OF FIGURES

1 Philippine Marine Jurisdictional Boundaries	2
2 Total Fish Production, by Sector, 2002	10
3 Volume of Fish Production, by Sector, 1993-2002	11
3 Value of Fish Production, by Sector, 1993-2002	11
4 Major Fisheries Export in Terms of Value, 2002	42

ENDNOTES

iii

HIGHLIGHTS

ORLD SCENARIO: Philippine Fisheries

The Philippines ranked eleventh (11th) among the top fish producing countries in the world for the year 2000 with a notable production of 2.94 million metric tons of fish, crustaceans, molluscs and aquatic plants (including seaweeds) or 2.1 percent to the total world production of 141.78 million metric tons (*FAO Website*).

Eleventh (11th) in the world aquaculture production of fish, crustaceans and mollusks by principal producers in 2000 which posted a total of 0.388 million metric tons valued at 0.680 million dollars or 1.1% and 1.3% to total world aquaculture production amounting to 35.585 million metric tons and 50.859 million dollars respectively (*FAO Website*).

The world's second (2nd) largest producer of aquatic plants (including seaweeds) that contributed 6.5% or 0.657 million metric tons of the world total production of 10.130 million metric tons in 2000. Leading was China with 7.864 million metric tons or 77.6% followed by other principal producers: Japan with 5.2%; Korea Republic with 3.7%; Indonesia with 2.0%; and other countries with 5.0% (*FAO Website*).

The fishing industry's contribution to the country's Gross Domestic Products (GDP) of P4,023 billion at current prices and P1,046 billion at constant prices were 2.2% (P90.180 B) and 4.0% (P41.772 B).

The industry also accounted 15.2% (P90.2 billion) and 20.3% (P41.8 billion) of the Gross Value Added (GVA) in Agriculture, Fishery and Forestry Group of P592.1 billion and P206.2 billion at current and constant prices correspondingly, the largest share next to agricultural crops.

EMPLOYMENT IN THE FISHING INDUSTRY

The fishing industry provided employment to around one million or 5% of the country's labor force. In aquaculture, 26% (258,480) fishfarmers are engaged in different culture methods, municipal employed 68% (675,677) and commercial fisheries 6% (56,715).

PERFORMANCE OF THE FISHING INDUSTRY

- Fisheries production increased from 2.632 million metric tons at P70.2 billion in 1993 to 3.369 million metric tons at P113.2 billion in 2002. The annual growth rates attained during these periods were 2.8% (volume) and 5.4% (value).
- The performance of the fishery sector in 2002 grew by 6.4% compared to the previous year of 5.8%. Production grew from 3,166,530 metric tons in 2001 to 3,369,306 metric tons in 2002. Out of the total fish production for 2002, aquaculture fisheries demonstrated the highest share of 39.7% (1,338,175 MT) while commercial fisheries with 30.9% (1,042,193 MT) and municipal fisheries with 29.4% (988,938 MT).

In the same year, aquaculture registered the highest growth of 9.6% in terms of production followed by commercial fisheries with 6.7% and a 2% increase for municipal fisheries. The remarkable increase in aquaculture signified its importance as source of fish supply.

In terms of value, a 5.9% growth was realized from a total of P106.9 billion attained in 2001 to P113.2 billion in 2002.

- Among the major regional contributors to the total fish production, Autonomous Region for Muslim Mindanao (ARMM) had the highest percentage share of 16% where seaweed was the major commodity cultured. Western Mindanao or Region IX fell on the 2nd place with 13.1% and Region IV-B (MIMAROPA) ranked 3rd with 10.8%.

FISHERIES EXPORT AND IMPORT PERFORMANCE

- The foreign trade performance of the fishery sector for 2002 recorded a trade surplus of 409 million dollars – a significant increase of 5.8% from the previous year. Total fishery exports amounted to 506 million dollars whereas fishery imports attained 97 million dollars only.
- In 2002, the total fishery exports posted a 10% growth in terms of value and 14.4% in volume. Combined earnings of the top three fishery exports (tuna, shrimp/prawn and seaweeds) contributed \$358.7 million or 70.9% to the total export of \$506 million – 13.6 % higher (\$315.8 million) compared to 2001.

Tuna, the number one fishery export, gained 22.4% from total earnings of \$118.6 million in 2001 to \$145.2 million in 2002 – with canned tuna (64%) and fresh/chilled/frozen tuna (35%) as the major contributors. The biggest buyers were U S A, Canada and Singapore with corresponding imports of 20%, 14% and 12% to the total tuna exports.

Overtake situation in shrimp/prawn export was recorded in 2002 where it slid down to 2nd place from 1st during the previous years. Shrimp/prawn posted a 12% increase in export revenue for 2002 compared to the 13% decline in 2001 – from \$144.7 million in 2000, \$125.7 million in 2001 to \$140.8 million this year. Most of the shrimps/prawns are exported in fresh/chilled/ frozen form that generated an export revenue of \$138.9 million or 98% with Japan as the major buyer constituting 61% of the total export.

Although earnings from seaweed export grew less than 2%, a massive contribution to total fishery exports amounted to \$72.7 million or 14.4%. Carrageenan (52%) and seaweeds & other algae (47%) constituted the bulk number of this export to their main destinations –Denmark, France and U S A.

Other major fishery exports amounted to \$103.8 or 20.5% to the overall total: octopus (\$32.2 M), crab/crab fat (\$30.0 M), cultured pearls, worked (\$11.9 M), lapu-lapu (\$10.6 M) cuttlefish/squid (\$8.6 M), ornamental fish (\$6.4 M), and roundscad (\$3.9 M). While other fishery products amounted to only \$43.5 million or 8.6%.

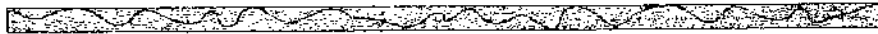
Major destinations of the Philippine fish and fishery products: Japan (34.5%); U S A (23.9%); Hongkong (12.8%); Singapore (4.2%); Korea (3.4%); United Kingdom (3.2%); Denmark (3.1%); Canada (2.7%); France (2.7%); Taiwan (2.5%) and other countries (7.0%).

Out of the total \$96.6 M imports of fish and fishery products in 2002, 77% were accounted by two products: chilled frozen fish with \$41.7 M (43.1%) and fish meal with \$32.8 M (33.9%).

Chilled/frozen fish comprised of frozen tuna (41.9%) for canning and export; sardines (39%) and mackerel (19.1%) for canning and domestic consumption. Major suppliers for chilled/frozen tuna: Japan (21%); and Indonesia.(16%). While for sardines: Canary Island (54%); and Mauritania (26%). And for mackerel: China Republic (34%), and Mexico (16%).

Fishmeal, a vital component of animal feeds, was mainly supplied by Peru (34%) and U S A (26%).

In terms of total fishery import value, the major sources: U S A (13.8%); Peru (12.3%); Canary Island (9.5%); China Peoples Republic (6.6%); Thailand (5.7%); Taiwan (5.3%); Indonesia (4.7%); Mauritania (4.5%); Japan (4.5%) and Chile (3.7%). While the rest or 29% was supplied by other countries.



I. FISHERY RESOURCES

**II. FISHERIES CONTRIBUTION
TO THE ECONOMY, 2002**

PHILIPPINE MARINE JURISDICTIONAL BOUNDARIES

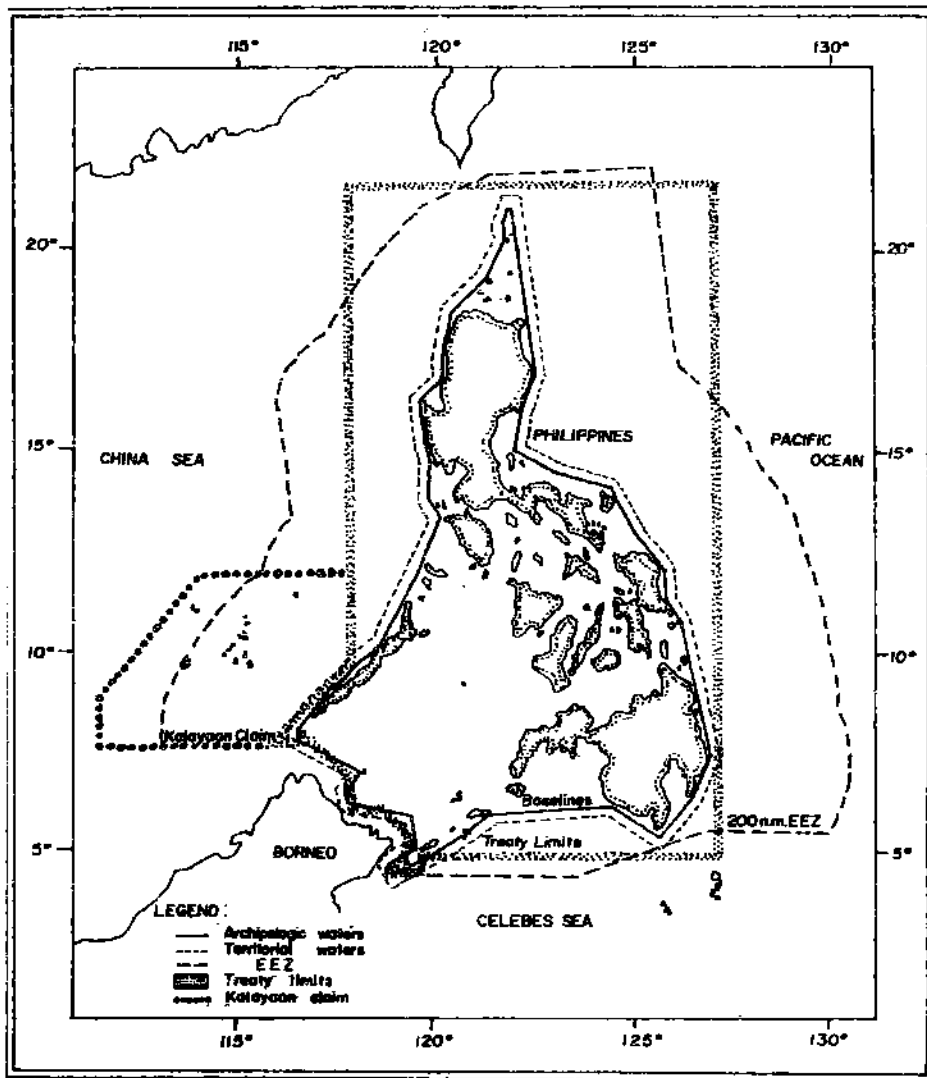


Figure 1. Map of the Philippines showing the limits of archipelagic, territorial waters, treaty limits, Exclusive Economic Zone (200 N.M. EEZ) and Kalayaan claim.

2002 PHILIPPINE FISHERIES PROFILE

I. FISHERY RESOURCES

A. Marine Resources

1. Total Territorial Water Area (including the EEZ)	2,200,000 sq. km.
a. Coastal	266,000 sq. km.
b. Oceanic	1,934,000 sq. km.
2. Shelf Area (Depth 200 m)	184,600 sq. km.
3. Coral Reef Area	27,000 sq km
	(Within the 10-20 fathoms where reef fisheries occur)
4. Coastline (length)	17,460 km

B. Inland Resources

1. Swamplands	246,063 ha
a. Freshwater	106,328 ha
b. Brackishwater ^{1/}	139,735 ha
2. Existing Fishpond	253,854 ha
a. Freshwater	14,531 ha
b. Brackishwater ^{2/}	239,323 ha
3. Other Inland Resources	250,000 ha
a. Lakes	200,000 ha
b. Rivers	31,000 ha
c. Reservoirs	19,000 ha

FISHERIES CONTRIBUTION TO THE ECONOMY, 2002

A. Fisheries Contribution to Total GDP ^{3/}

1. At Current Prices	2.2%
2. At Constant Prices	4.0%

B. Fisheries Contribution to GVA in Agriculture, Fishery and Forestry by Industry Group ^{3/}

Industry Group	At Current Prices (P M)	% to Agri-cultural Sector	At Constant Prices (P M)	% to Agri-cultural Sector
1. Agricultural crops (Palay, corn, coconut, etc.)	343,295	58.0	105,163	51.0
2. Livestock	78,983	13.3	26,580	12.9
3. Poultry	50,960	8.6	23,611	11.5
4. Agricultural activities	27,920	4.7	8,737	4.2
5. Fishery	90,180	15.2	41,772	20.3
6. Forestry	803	0.1	335	0.2
Total	592,141	100.0	206,198	100.0

C. Employment ^{4/}

1. Aquaculture	258,480 persons
2. Municipal	675,677 persons
3. Commercial	56,715 persons
Total	990,872 persons

D. Balance of Trade ^{5/}

	2002			2001		
	Quantity (MT)	FOB Value (P M)	FOB Value (\$ M)	Quantity (MT)	FOB Value (P M)	FOB Value (\$ M)
Fishery Exports	182,032	26,178	506	159,069	22,723	459
Fishery Imports	218,585	5,073	97	179,994	3,815	76
Trade Balance	(36,553)	21,105	409	(20,925)	18,908	383

E. Total Fish Production, by Sector, 2002 ^{6f}

Sector	Quantity		Value	
	(000 MT)	%	(P B)	%
1. Aquaculture	1,338.2	39.7	35.4	31.3
2. Municipal Fisheries	988.9	29.4	38.2	33.7
3. Commercial Fisheries	1,042.2	30.9	39.7	35.0
TOTAL	3,369.3	100.0	113.2	100.0

**F. Fish Production, by Sector and Region, 2002
(in MT)**

Region	Commercial	Municipal	Aquaculture	Total	% share to total
NCR	160,551	2,767	4,725	168,043	4.99
CAR	0	1,090	2,426	3,516	0.10
I	3,470	26,895	42,993	73,358	2.18
II	16,151	21,601	5,301	43,053	1.28
III	11,506	18,202	152,518	182,226	5.41
IV-A	92,631	121,071	97,016	310,718	9.22
IV-B	36,149	130,766	196,546	363,461	10.79
V	35,520	92,233	30,757	158,510	4.70
VI	117,924	127,406	104,598	349,928	10.39
VII	59,918	51,673	91,478	203,069	6.03
VIII	37,668	42,519	16,046	96,233	2.86
IX	196,313	120,440	124,717	441,470	13.10
X	37,397	28,619	23,825	89,841	2.67
XI	12,472	28,362	11,431	52,265	1.55
XII	143,708	37,145	19,305	200,158	5.94
XIII	4,669	61,908	27,815	94,392	2.80
ARMM	76,146	76,241	386,678	539,065	16.00
Total	1,042,193	988,938	1,338,175	3,369,306	100.00

Fish Production, by Sector 1993-2002 ^{6/}

1. Volume of Fish Production (in MT)

Year	Aquaculture	Municipal	Commercial	Total
2002	1,338,175	988,938	1,042,193	3,369,306
2001	1,220,456	969,535	976,539	3,166,530
2000	1,100,902	945,945	946,485	2,993,332
1999	1,048,679	926,339	948,754	2,923,772
1998	997,841	891,146	940,533	2,829,520
1997	984,439	924,466	884,651	2,793,556
1996	1,007,676	909,248	879,073	2,795,997
1995	940,589	972,043	893,232	2,805,864
1994	869,083	992,578	859,328	2,720,989
1993	793,620	1,013,969	824,356	2,631,945

2. Value of Fish Production (in million pesos)

Year	Aquaculture	Municipal	Commercial	Total
2002	35,404	38,159	39,681	113,244
2001	36,634	34,222	36,089	106,945
2000	32,148	32,595	33,879	98,622
1999	29,046	31,034	32,242	92,322
1998	26,430	28,966	29,737	85,133
1997	27,289	27,393	25,935	80,617
1996	33,347	25,373	24,555	83,275
1995	33,658	26,464	23,065	83,187
1994	35,003	24,475	20,714	80,192
1993	30,163	22,031	18,021	70,215

H. Five Year Fish Production, Trend 1998-2002

Year	Quantity (M T)	% Increase/ (Decrease)	Value (000 P)	% Increase (Decrease)
2002	3,369,306	6.40	113,244,082	5.89
2001	3,166,530	5.79	106,944,716	8.44
2000	2,993,332	2.38	98,622,134	6.82
1999	2,923,772	3.33	92,322,323	8.44
1998	2,829,520	1.29	85,133,054	5.60

TOTAL FISH PRODUCTION BY SECTOR, 2002

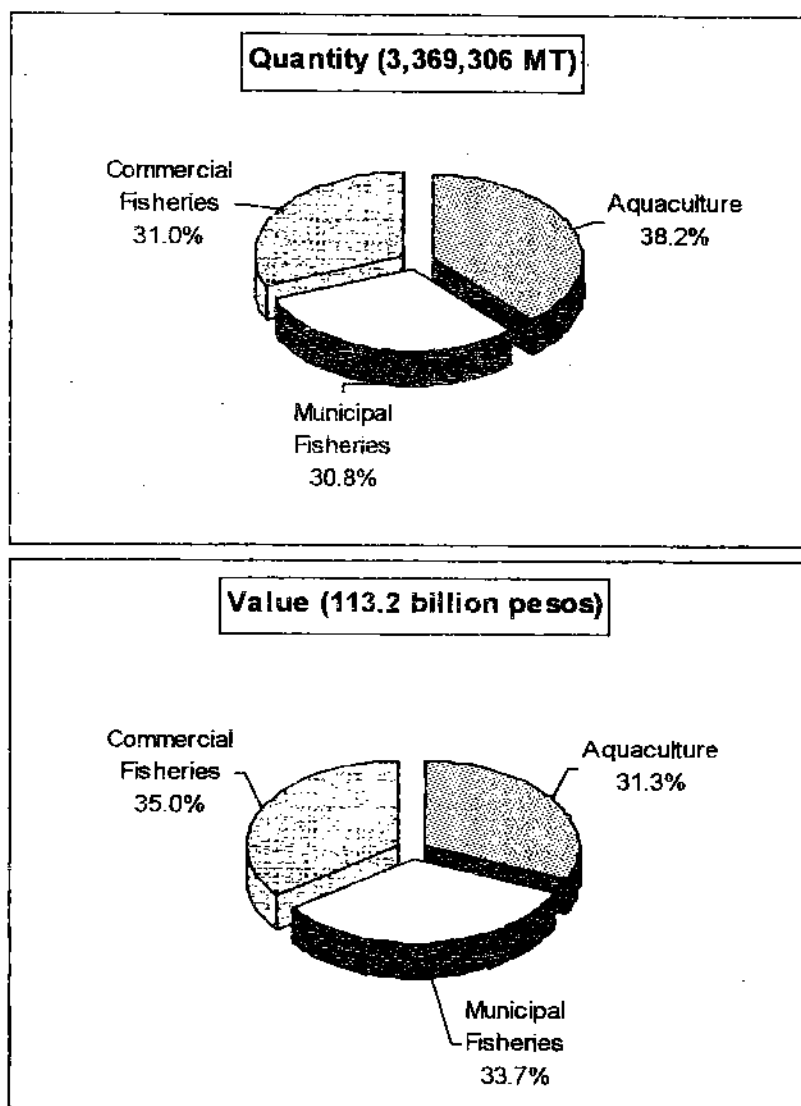
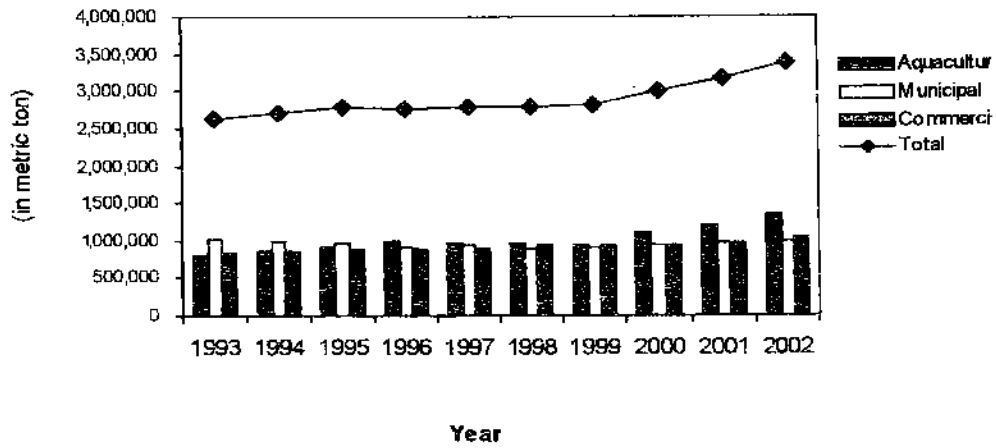


Figure 2

VOLUME OF FISH PRODUCTION, BY SECTOR 1993-2002



VALUE OF FISH PRODUCTION, BY SECTOR 1993-2002

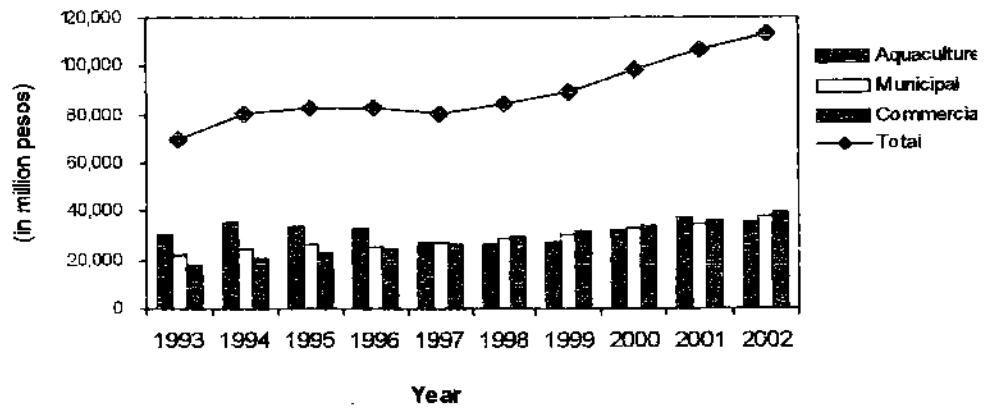
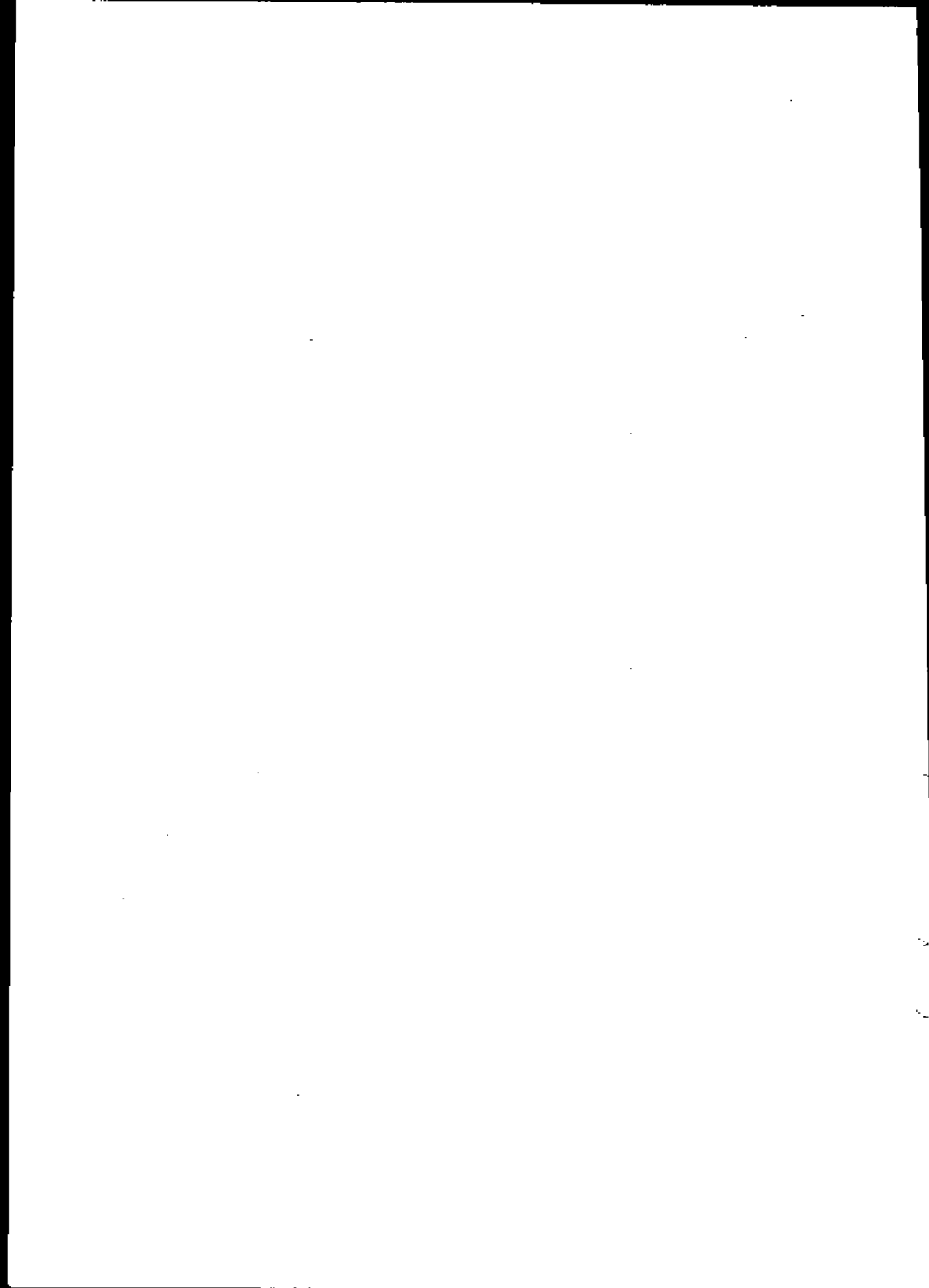


Figure 3



III. AQUACULTURE PRODUCTION, 2002

This includes production from the following:

- Brackishwater fishpond
- Freshwater fishpond
- Fishpen and fishcage in fresh and marine waters
- Mariculture of oyster, mussel and seaweeds

**A. SUMMARY OF AQUACULTURE PRODUCTION BY CULTURE,
ENVIRONMENT AND REGION, 2002 ^{6/}**

Region	Total Aqua- culture	Brackishwater			Total	Freshwater			Total	Marine Waters			Total	Mar- culture
		Fish- pond	Fish- cage	Fish- pen		Fish- pond	Fish- cage	Fish- pen		Fish- cage	Fish- pen	Total		
NCR	4,725	497			497	0	471	3,757	4,228				-	
CAR	2,426	0			-	461	1,965		2,426				-	
I	42,993	18,670	2,582	4,437	25,689	2,477	12		2,489	5,555	6,263	11,818	2,997	
II	5,301	899	142		1,041	2,269	1,706		3,975	9		9	276	
III	152,518	87,534			87,534	60,651	46	6	60,703	516		516	3,765	
IV-A	97,016	14,455	3		14,459	537	30,639	23,665	54,841	52	266	318	27,399	
IV-B	196,546	3,975			3,975	511			511			511	192,060	
V	30,757	3,726			3,726	229	4,866		5,095	66		66	21,870	
VI	104,598	53,914			53,914	246			246	64	1,236	1,300	49,138	
VII	91,478	8,396			8,396	51			51	431	30	461	82,570	
VIII	16,046	2,371			2,371	87	8	8	103	37		37	13,535	
IX	124,717	18,546			18,546	86			86	21	27	48	106,037	
X	23,825	11,700			11,700	576			576	22	3	25	11,524	
XI	11,431	7,474			7,474	575	3		578	1,173	1,235	2,408	971	
XII	19,305	7,805			7,805	1,210	9,765		10,975	525		525	-	
XIII	27,815	3,589	601		4,190	185	74		259	30	15	45	23,321	
ARMM	386,678	2,846			2,846	94	94	32	220		4	4	383,608	
Total	1,338,175	246,397	3,328	4,437	254,162	70,245	49,649	27,468	147,362	8,501	9,079	17,580	919,071	

B. AQUACULTURE PRODUCTION BY CULTURE ENVIRONMENT, REGION AND SPECIES, 2002

1. Production from Brackishwater (in MT)

a) Fishpond

Region	Total	Milkfish	Tiger W. Shrimp		Others
			Prawn & Endeavor Prawn		
NCR	497	409	37	0	51
I	18,670	17,621	217	115	717
II	899	299	66	78	456
III	87,534	65,586	15,164	28	6,756
IV-A	14,455	13,726	432	226	71
IV-B	3,975	3,052	910	1	12
V	3,726	1,553	507	186	1,480
VI	53,914	52,362	767	112	673
VII	8,396	6,707	1,609	0	80
VIII	2,371	2,077	247	0	47
IX	18,546	9,327	7,083	883	1,253
X	11,700	5,568	5,674	79	379
XI	7,474	7,125	91	14	244
XII	7,805	6,755	634	1	415
XIII	3,589	1,566	1,741	134	148
ARMM	2,846	2,144	314	130	258
Total	246,397	195,877	35,493	1,987	13,040

Others species:	13,040
Tilapia	8,266
Mudcrab	4,726
Grouper	28
Siganid	20

b) Fishcage and Fishpen

Fishcage			
Region	Total	Milkfish	Grouper
I	2,582	2,582	
II	142	142	
IV-A	3	1	2
XIII	601	601	
Total	3,328	3,326	2

Fishpen			
Region	Total	Milkfish	Tilapia
II	4,437	4,384	53
Total	4,437	4,384	53

**2. Production from Freshwater Fishpond, 2002
(in MT)**

a) Fishpond

Region	Total	Tilapia	Catfish	Mudfish	Carp	Others
CAR	461	449	4		8	
I	2,477	2,369	19	53	10	26
II	2,269	2,092	110	59	8	0
III	60,651	57,626	1,941	996	35	53
IV-A	537	536	0	1		0
IV-B	511	511				
V	229	183	46			
VI	246	108	138			
VII	51	51	0			
VIII	87	87	0			
IX	86	71	0	15		
X	576	287	17	129	143	
XI	575	413	142	12	7	1
XII	1,210	946	184	78		2
XIII	185	152	0	1	5	27
ARMM	94	61	33			
Total	70,245	65,942	2,634	1,344	216	109

Other species	109
Gourami	41
Bangus	27
Not Specified	41

b) Freshwater Fishcage

Region	Total	Tilapia	Carp	Milkfish	Catfish
NCR	471	399	72		
CAR	1,965	1,965			
I	12	12			
II	1,706	1,706			
III	46	46			
IV-A	30,639	30,090	382	167	
V	4,866	4,866			
VIII	8	8			
XI	3	3			
XII	9,765	7,069		2,696	
ARMM	94	92			2
Total	49,649	46,330	454	2,863	2

c) Freshwater Fishpen

Region	Total	Tilapia	Milkfish	Carp
NCR	3,757		3,757	
III	6	6		
IV-A	23,665	1,667	4,517	17,481
VIII	8	8		
ARMM	32	32		
Total	27,468	1,713	8,274	17,481

3. Production from Marine Waters, 2002 (in MT)

a) Marine Fishcage

Region	Total	Milkfish	Groupers	Others
I	5,555	5,543	n	12
II	9	1		8
III	516	516		
IV-A	52	52		
V	66	61	5	
VI	64	43	19	2
VII	431	429	2	
VIII	37	0	37	
IX	21	21		
X	22	10	4	8
XI	1,173	1,138	3	32
XII	525	451		74
XIII	30	6	6	18
ARMM				
Total	8,501	8,271	76	154

n - negligible

Other species: 154

Mudcrab 5

Siganid 48

Lobster 6

Tilapia 12

Not specified 83

b) Marine Fishpen

Region	Total	Milkfish	Siganid	Grouper	Others
I	6,253	6,261		2	
III					
IV-A	266	266			
VI	1,236	1,236			
VII	30	30			
IX	27	9		1	17
X	3		3		0
XI	1,235	1,235			
XII					
XIII	15	4	4	3	4
ARMM	4			3	1
Total	9,079	9,041	7	9	22

Other species:	22
Mudcrab	15
Snapper	2
Lobster	2
Snapper	2
Cavalla	1

**4. Production from Mariculture, 2002
(in MT)**

Region	Total	Oyster	Mussels	Seaweeds
I	2,995	2,658	337	
II	278	276		2
III	3,765	3,765		
IV-A	27,399	164	1,938	25,297
IV-B	192,060			192,060
V	21,870	52	686	21,132
VI	49,138	4,644	6,241	38,253
VII	82,570	166		82,404
VIII	13,535		2,438	11,097
IX	106,037	220	6	105,811
X	11,524			11,524
XI	971	624		347
XIII	23,321			23,321
ARMM	383,608			383,608
Total	919,071	12,569	11,646	894,856

C. MAJOR SPECIES PRODUCED IN AQUACULTURE FISHERIES, 2002

Species	Quantity (MT)	Percent (%)
Seaweeds	894,856	66.9
Milkfish (Bangus)	232,063	17.3
Tilapia (cichlid)	122,316	9.1
Shrimps/Prawns	37,480	2.8
Others	51,460	3.8
Total	1,338,175	100.0

D. TEN MAJOR LAKES OF THE PHILIPPINES ⁷¹

Name of Lakes	Location	Area (ha)
1. Laguna de Bay	Laguna and Rizal	90,000
2. Lake Lanao	Lanao del Sur	34,700
3. Taal Lake	Batangas	23,400
4. Lake Mainit	Surigao del Norte- Agusan del Norte	14,000
5. Naujan Lake	Oriental Mindoro	10,900
6. Lake Buluan	Maguindanao Sultan Kudarat	6,500
7. Lake Bato	Camarines Sur	3,800
8. Lake Buhi	Camarines Sur	1,800
9. Lake Dapao	Lanao del Sur	1,000
10 Lake Sebu	South Cotabato	964
Total		187,064



IV. MUNICIPAL FISHERIES PRODUCTION, 2002

This includes fishing done in coastal and inland waters with or without the use of boats of 3 gross tons or less.

A. MUNICIPAL FISHERIES PRODUCTION, BY REGION, 2002
(in MT)

Region	Marine	Inland	Total
NCR	2,767		2,767
CAR		1,090	1,090
I	25,338	1,557	26,895
II	16,002	5,599	21,601
III	11,925	6,277	18,202
IV-A	45,254	75,817	121,071
IV-B	130,085	681	130,766
V	90,839	1,394	92,233
VI	125,913	1,493	127,406
VII	51,563	110	51,673
VIII	41,708	811	42,519
IX	120,043	397	120,440
X	27,412	1,207	28,619
XI	28,114	248	28,362
XII	23,917	13,228	37,145
XIII	58,436	3,472	61,908
ARMM	57,978	18,263	76,241
Total	857,294	131,644	988,938

**B. MARINE MUNICIPAL FISH CATCH,
BY MAJOR FISH SPECIES, 2002**

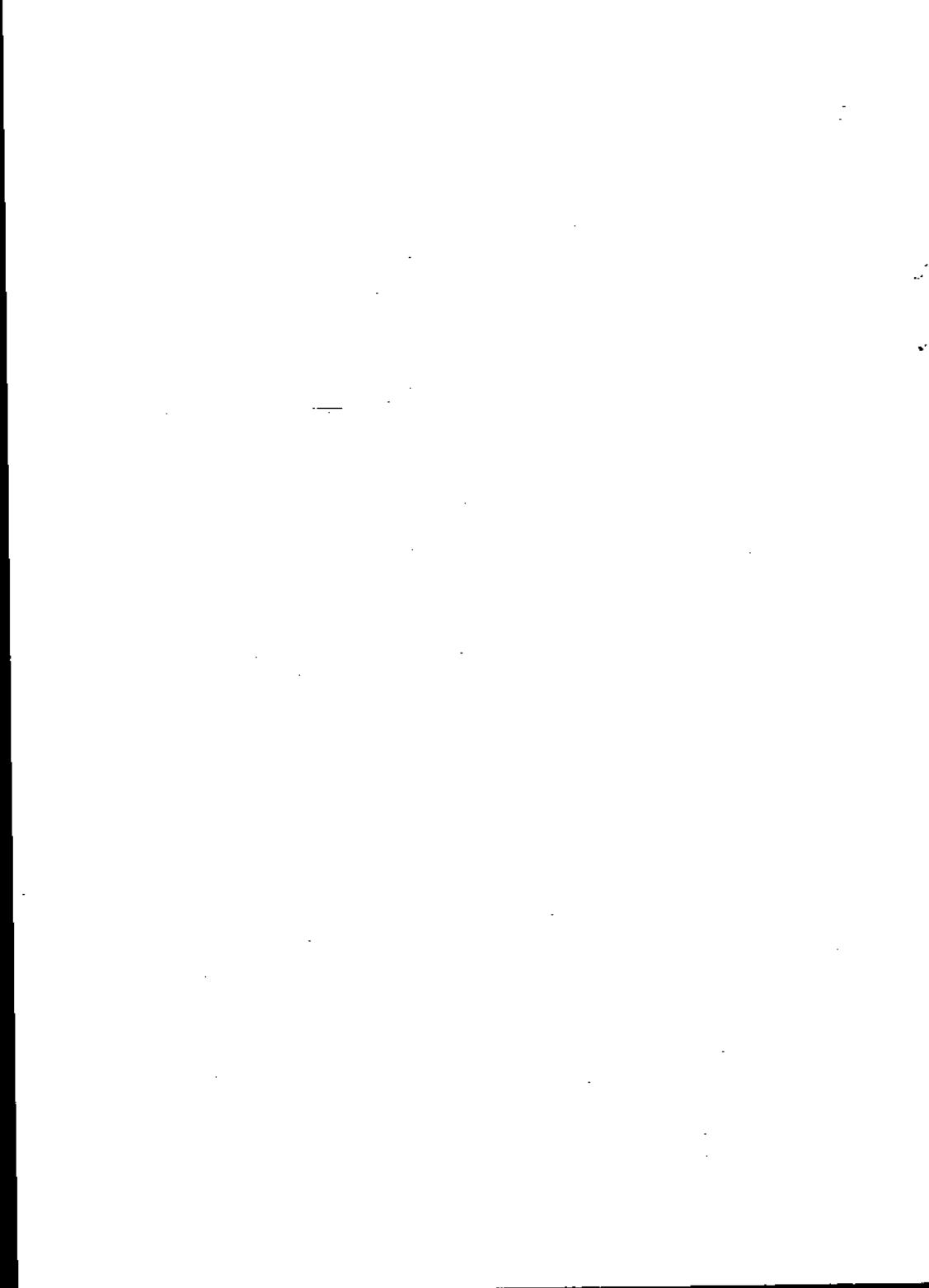
Major Species	Total	% to Total
1. Frigate Tuna (Tulingan)	62,174	7.3
2. Big-Eyed Scad (Matangbaka)	61,897	7.2
3. Roundscad (Galunggong)	43,273	5.0
4. Anchovies (Dilis)	40,389	4.7
5. Indian Mackerel (Alumahan)	39,433	4.6
6. Yellowfin Tuna (Tambakol)	36,743	4.3
7. Threadfin Bream (Bisugo)	36,423	4.2
8. Squid (Pusit)	33,996	4.0
9. Blue Crab (Alimasag)	31,503	3.7
10. Indian Sardines (Tamban)	30,547	3.6
11. Others	440,916	51.4
Total	857,294	100.0

**C. AVERAGE PERCENTAGE SHARE OF
MARINE MUNICIPAL FISHERIES PRODUCTION
BY MAJOR FISHING GROUNDS, 1992 - 1995
(in MT)**

	Fishing Ground	Total	% to Total
1.	Visayan Sea	92,885	11.50
2.	Bohot Sea	84,305	10.44
3.	East Sulu Sea	78,491	9.72
4.	Moro Gulf	74,765	9.26
5.	Guimaras Strait	55,106	6.82
6.	South Sulu Sea	44,000	5.45
7.	West Palawan Waters	38,444	4.76
8.	Lamon Bay	37,138	4.60
9.	Leyte Gulf	36,587	4.53
10.	Samar Sea	35,622	4.41
11.	Davao Gulf	28,365	3.51
12.	Cuyo Pass	27,253	3.37
13.	Tayabas Bay	22,500	2.79
14.	Others	152,063	18.83
	Total	807,524	100.00

**D. NUMBER OF MUNICIPAL FISHING BANCAS,
BY REGION, 2000 ^{b/}**

Region	Total	Motorized	Non-Motorized
CAR	660	49	611
I	17,678	11,641	6,037
II	3,304	1,502	1,802
III	27,038	18,375	8,663
IV	69,927	26,569	43,358
V	54,715	19,453	35,262
VI	41,808	16,234	25,574
VII	56,142	19,100	37,042
VIII	58,068	16,255	41,813
IX	45,650	13,280	32,370
X	9,041	2,472	6,569
XI	24,099	11,382	12,717
XII	10,759	2,671	8,088
XIII	31,283	11,202	20,081
ARMM	19,635	7,442	12,193
Total	469,807	177,627	292,180
Percent			
%	100	38	62





IV. COMMERCIAL FISHERIES PRODUCTION, 2002

Fishing with the use of fishing vessels
more than 3 gross tons.

**A. COMMERCIAL FISH PRODUCTION BY REGION
AND BY TYPE OF LANDING CENTERS, 2002**

Region	Total	Private	PFDA	Traditional
NCR	160,551		154,854	5,697
CAR				
I	3,470		1,273	2,197
II	16,151			16,151
III	11,506			11,506
IV-A	92,631		6,366	86,265
IV-B	36,149			36,149
V	35,520	9,005		26,515
VI	117,924	7,272	10,373	100,279
VII	59,918			59,918
VIII	37,668			37,668
IX	196,313	79,199	11,363	105,751
X	37,397	2,083		35,314
XI	12,472	1,373	4,164	6,935
XII	143,708	99,019	41,165	3,524
XIII	4,669			4,669
ARMM	76,146			76,146
Total	1,042,193	197,951	229,558	614,684

**B. COMMERCIAL FISHERIES PRODUCTION,
BY MAJOR FISH SPECIES, 2002**

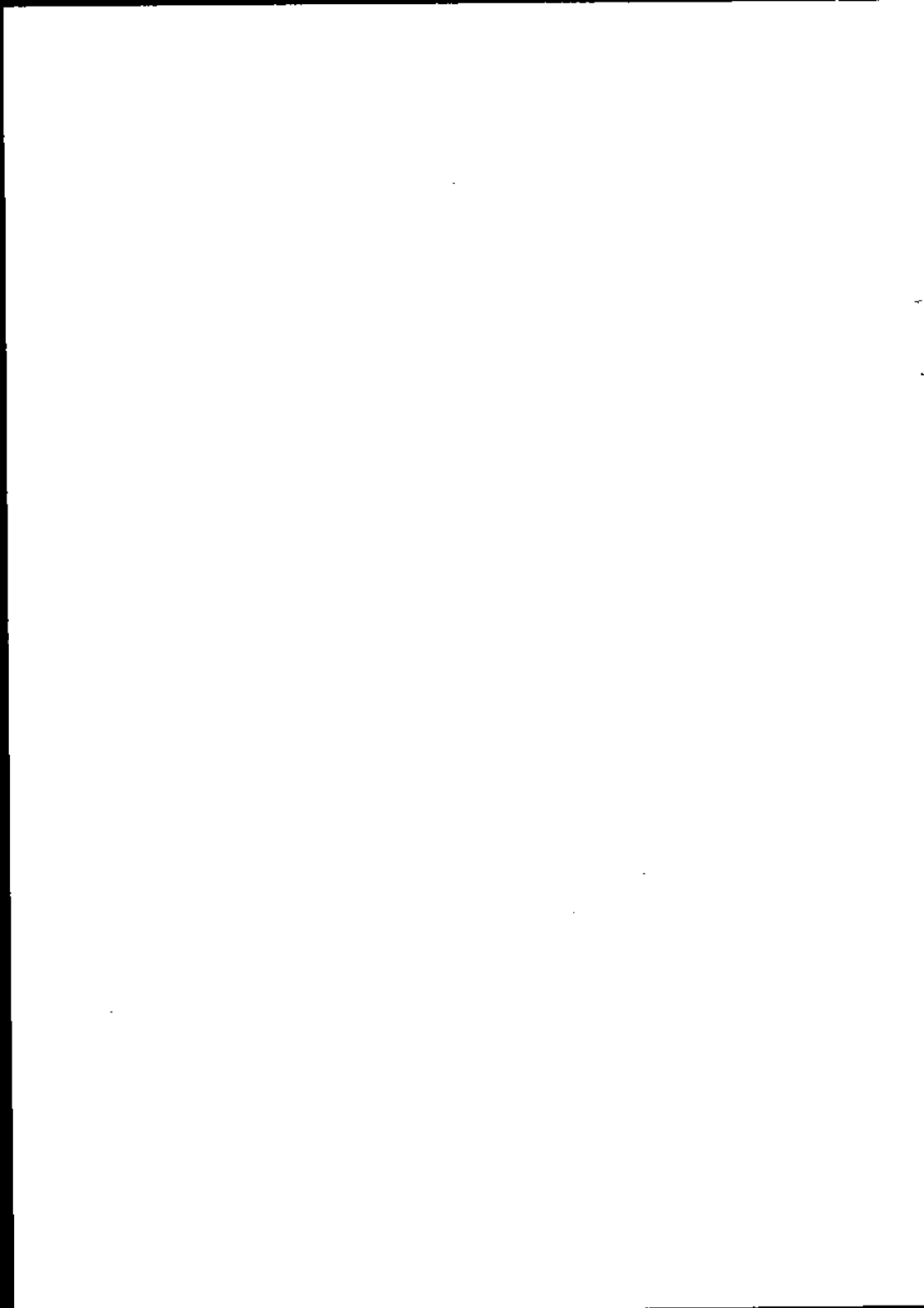
Major Species	Total (MT)	% to Total
1. Roundscad (Galunggong)	234,230	22.5
2. Indian Sardines (Tamban)	145,879	14.0
3. Frigate Tuna (Tulingan)	100,958	9.7
4. Skipjack (Gulyasan)	83,385	8.0
5. Yellowfin & Big-eyed Tuna (Albacore, Tambakol)	63,051	6.0
6. Big-eyed scad (Matangbaka)	38,889	3.7
7. Slipmouth (Sapsap)	37,768	3.6
8. Fimbriated Sardines (Tunsoy)	35,110	3.4
9. Anchovies (Dilis)	33,706	3.2
10. Indian Mackerel (Alumahan)	30,846	3.0
11. Other Species	238,371	22.9
Total	1,042,193	100.0

**2. AVERAGE PERCENTAGE SHARE
OF TOTAL COMMERCIAL FISH PRODUCTION
BY MAJOR FISHING GROUNDS, 1992-1995
(in MT)**

Fishing Ground	Total (MT)	%
1. West Palawan Waters	158,220	18.71
2. South Sulu Sea	149,243	17.65
3. Visayan Sea	137,942	16.32
4. Moro Gulf	98,050	11.60
5. Lamon Bay	41,901	4.96
6. Bohol Sea	34,263	4.05
7. East Sulu Sea	29,071	3.44
8. International Waters	25,558	3.02
9. Samar Sea	23,385	2.77
10. Guimaras Strait	23,382	2.77
11. Manila Bay	21,899	2.59
12. Tayabas Bay	19,826	2.35
13. Sibuyan Bay	15,434	1.83
14. Others	67,272	7.96
Total	845,446	100.00

**D. NUMBER OF COMMERCIAL FISHING VESSEL
BY REGION, 1999 ^{9/} (Catcher and Accessory Boat)**

Region	Number	Gross Tonnage
NCR	1,351	158,509.59
I	113	1,832.99
II	64	717.94
III	40	1,080.67
IV	221	3,857.38
V	160	4,385.85
VI	404	25,674.39
VII	94	2,053.81
VIII	124	1,740.27
IX	392	22,758.66
X	43	1,215.10
XI	555	45,893.86
XII	7	85.09
XIII	26	293.86
ARMM	7	181.94
Total	3,601	270,281.40





IV. EXTERNAL TRADE

A. EXPORTS ^{5/}

1. Export of Fish and Fishery Products By Kind, Quantity and Value, 2002

Commodity/Kind	Quantity (MT)	FOB Value	
		(000 P)	(000 \$)
● Fish Crustaceans, Mollusks, etc. and Preparation	135,518	21,319,561	412,066
a. Fish fresh (live or dead) chilled or frozen	42,300	4,313,862	83,379
b. Fish, dried, salted or in brine, smoked fish	2,057	235,357	4,549
c. Crustaceans, mollusks and aquatic invertebrate	38,236	10,862,225	209,946
d. Fish and other aquatic invertebrate, prepared/ preserved	52,925	5,908,117	114,192
● Shells and By-Products	2,714	952,920	18,418
● Miscellaneous and Other Fishery Products	43,800	3,905,279	75,482
Grand Total	182,032	26,177,760	505,966

2. Major Fishery Exports in Terms of Value, 2002

Commodity/Kind	Quantity (MT)	FOB Value (P 000)	FOB Value (\$ 000)
1. Tuna	72,296	7,510,109	145,156
Fresh/chilled/frozen	23,621	2,620,418	50,648
Smoked/dried	705	69,092	1,335
Canned	47,970	4,820,599	93,173
2. Shrimp/Prawn	16,919	7,287,333	140,850
Fresh/chilled/frozen	16,562	7,184,216	138,857
Other than fresh/frozen	357	103,117	1,993
3. Seaweeds	40,258	3,759,618	72,666
Seaweeds & other Algae, nes	31,098	1,766,097	34,135
Seaweeds & algae used for food	142	8,929	173
Carrageenan	7,928	1,970,259	38,081
Kelp powder	1,090	14,333	277
4. Octopus	11,821	1,664,988	32,181
Fresh/chilled	116	14,773	286
Frozen/dried/salted	11,705	1,650,215	31,895
5. Crabs/crabs fat	5,296	1,555,145	30,058
Frozen	100	13,804	267
Other than frozen	4,188	836,005	16,158
Prepared/preserved	1,008	705,336	13,633

Commodity/Kind	Quantity (MT)	FOB Value (P 000)	FOB Value (\$ 000)
6. Cultured Pearls, Worked	2,123	616,876	11,923
7. Lapu-lapu, live other than fry	6,608	549,427	10,619
8. Cuttlefish/squid	2,419	447,785	8,655
Fresh/chilled	40	7,057	136
Frozen/dried/salted	2,338	431,917	8,348
Prepared/preserved	41	8,812	170
9. Ornamental fish, live	5,632	333,130	6,439
10. Roundscad	2,633	204,178	3,946
Fresh/chilled/frozen	2,471	177,793	3,436
Smoked/dried	162	26,385	510
Total major commodities	163,884	23,928,589	462,494
Total of other commodities	18,148	2,249,171	43,472
Grand Total	182,032	26,177,760	505,966

**3. Major Destinations of Top Three Fishery Exports
by Kind, Quantity and Value, 2002**

Commodity/Kind	Quantity (MT)	FOB Value (000 P)	FOB Value (000 \$)
1. Tuna	72,296	7,510,109	145,156
Fresh/chilled/frozen	23,621	2,620,418	50,648
U S A	5,290	1,251,109	24,182
Japan	8,907	655,685	12,673
Hongkong	1,292	262,241	5,069
Others	8,132	451,383	8,724
Smoked/dried	705	69,092	1,335
Japan	413	42,423	820
U S A	101	14,228	275
Taiwan	109	5,273	102
Others	82	7,168	138
Canned	47,970	4,820,599	93,173
Canada	7,404	672,602	13,000
Singapore	4,943	577,419	11,160
Germany	5,450	519,836	10,047
Others	30,173	3,050,742	58,966
2. Shrimp/Prawn	16,919	7,287,333	140,850
Fresh/chilled/frozen	16,562	7,184,216	138,857
Japan	8,560	4,405,063	85,141
Spain	1,886	419,603	8,110
U S A	1,143	559,699	10,818
Others	4,973	1,799,851	34,788
Other than fresh/frozen	357	103,117	1,993
Japan	181	64,984	1,256
Spain	167	36,939	714
U S A	1	402	8
Others	8	792	15

Commodity/Kind	Quantity (MT)	FOB Value (000 P)	FOB Value (000 \$)
3. Seaweeds	40,258	3,759,618	72,666
Seaweeds & other Algae, nes	31,098	1,766,097	34,135
France	6,837	282,984	5,470
USA	3,881	263,110	5,085
Denmark	1,599	207,312	4,007
Others	18,781	1,012,691	19,573
Carrageenan	7,928	1,970,259	38,081
Denmark	1,593	595,566	11,511
France	957	278,679	5,386
United Kingdom	1,223	207,442	4,009
Others	4,155	888,572	17,175
Seaweeds and algae used for food	142	8,929	173
Japan	21	3,162	61
Denmark	90	2,698	52
Okinawa	10	1,988	38
Others	21	1,081	22
Kelp powder	1,090	14,333	277
Japan	1,075	14,271	276
China, People's Rep. of	15	62	1
Total (3) major commodities	129,473	18,557,060	358,672
Total other commodities	52,559	7,620,700	147,294
Grand Total	182,032	26,177,760	505,966

**4. Fishery Exports, by Major Country of Destination
in Terms of Value, 2002**

Country/Destination	Quantity (MT)	FOB Value (000 P)	FOB Value (000 \$)
Japan	30,065	6,532,920	126,269
U S A	35,563	5,509,508	106,488
Hongkong	16,115	2,009,057	38,831
Taiwan (Rep. of China)	14,298	1,753,498	33,988
Korea, Rep. Of	9,423	1,597,925	30,885
Canada	9,334	1,071,924	20,718
Denmark	3,505	828,868	16,020
Singapore	6,062	784,544	15,164
United Kingdom	5,908	746,156	14,422
Germany	6,159	654,118	12,643
Total Major Countries	136,432	21,493,518	415,428
Other Countries	45,600	4,684,242	90,538
Grand Total	182,032	26,177,760	505,966

MAJOR FISHERIES EXPORT IN TERMS OF VALUE, 2002

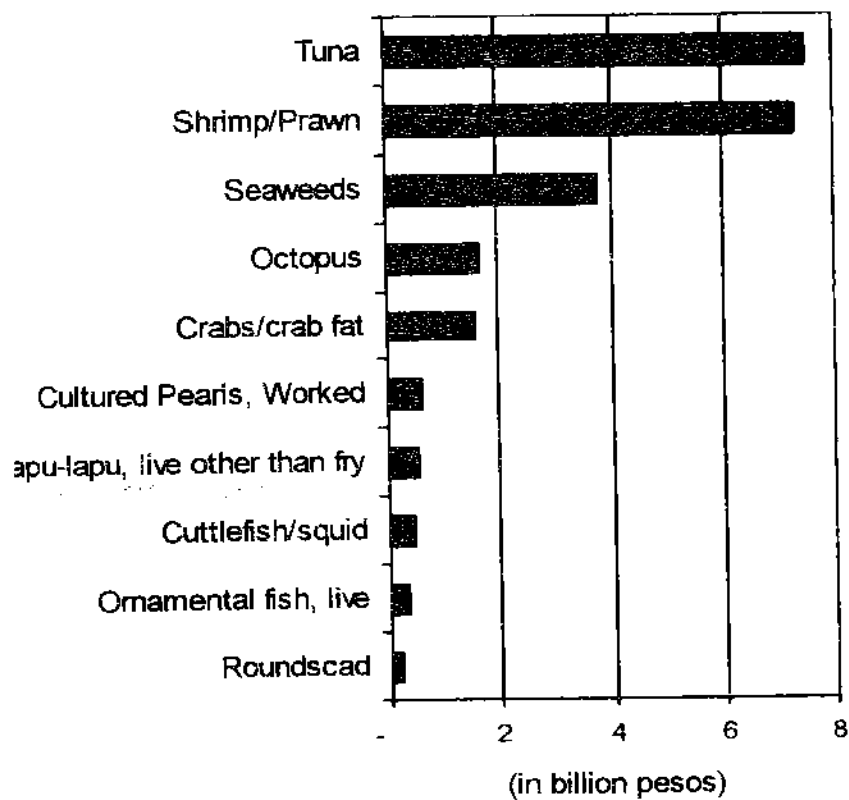


Figure 4

B. IMPORTS ^{5/}

1. Imports of Fish and Fishery Products By Kind, Quantity and Value, 2002

Commodity	Quantity (MT)	FOB Value	
		(000 P)	(000 \$)
Fresh/Frozen/Chilled	127,224	2,587,339	49,142
Flour, Meals & Pellets of Fish Crustaceans and Mollusks Unfit for Human Consumption	71,500	1,725,862	32,780
Canned	2,153	80,986	1,538
Salted, Dried, Smoked, etc.	652	30,100	572
Other Commodities	17,056	649,051	12,581
Grand Total	218,585	5,073,338	96,613

Major Fishery Imports in Terms of Value, 2002

Commodity/Kind	Quantity (MT)	FOB Value (000 P)	FOB Value (000 \$)
1. Chilled Frozen Fish	115,188	2,194,474	41,680
a) Tuna	31,650	919,409	17,462
Japan	6,211	197,003	3,742
Indonesia	4,729	148,470	2,820
Others	20,710	573,936	10,900
b) Sardines	56,173	856,096	16,260
Canary Is.	30,455	465,008	8,832
Mauritania	14,949	228,256	4,335
Others	10,769	162,832	3,093
c) Mackerel	27,365	418,969	7,958
China, Republic	10,340	142,101	2,699
Mexico	4,601	68,367	1,298
Others	12,424	208,501	3,961
2. Flour, meals & pellets of fish crustaceans & mollusks unfit for human consumpti	71,500	1,725,862	32,780
Peru	23,803	594,276	11,287
U S A	21,163	446,153	8,474
Others	26,534	685,433	13,019
Total major imports	186,688	3,920,336	74,460
Other Commodities	31,897	1,153,002	22,153
Grand Total	218,585	5,073,338	96,613



IV. OTHER FISHERIES INFORMATION

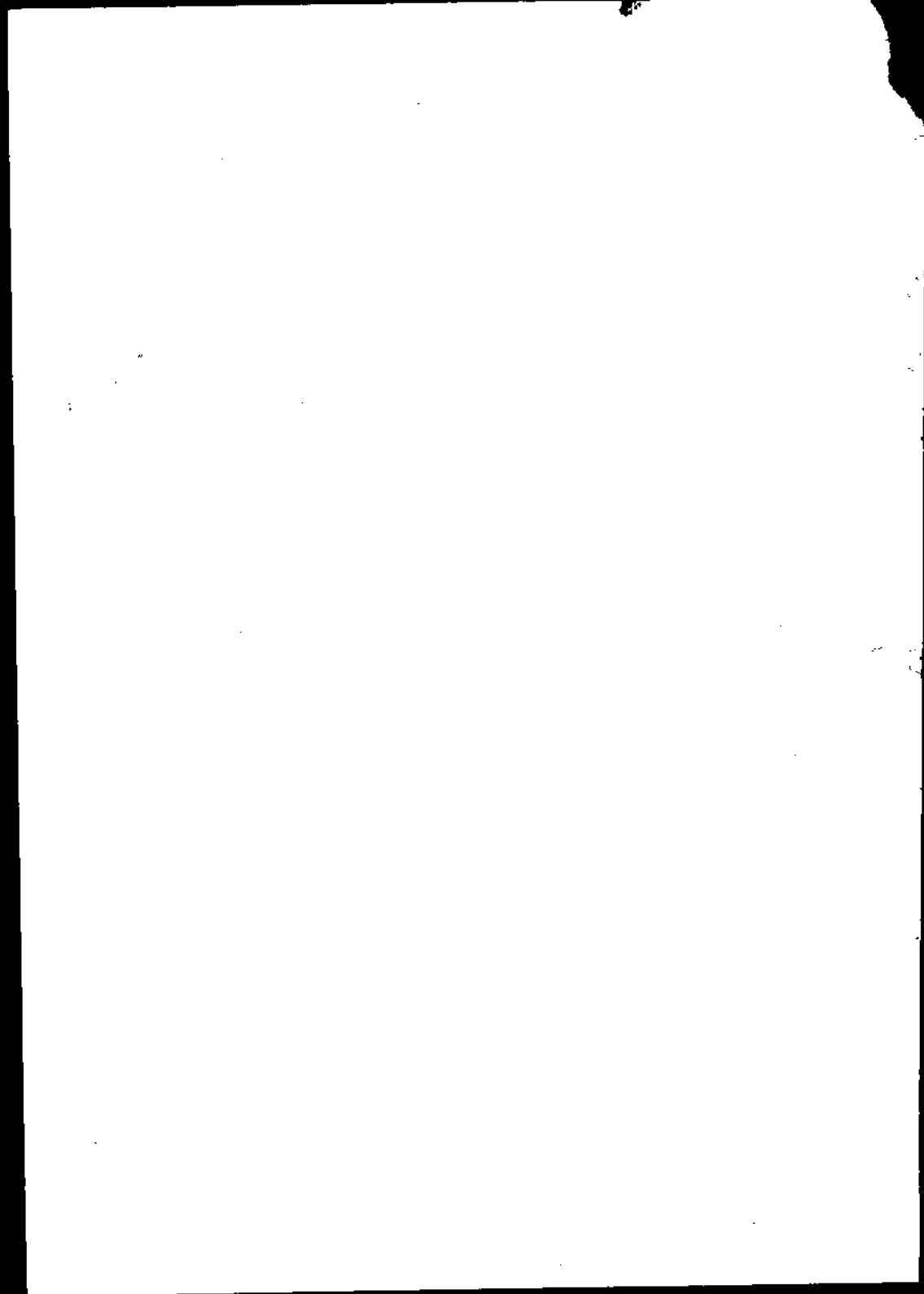
FOOD CONSUMPTION ^{10/}

Comparison of Mean One-Day per Capita Food Consumption: 1978, 1982, 1987 and 1993

Food Group/Subgroup	Consumption, g			
	(Raw, "as purchased")			
	1978	1982	1987	1993
All Foods	897	915	869	803
Cereals and Cereal Products	367	356	345	340
Rice and Products	308	304	303	282
Corn and Products	38	34	24	36
Other Cereals & Products	21	18	18	22
Starchy Roots and Tubers	37	42	22	17
Sugars and Syrups	19	22	24	19
Fats and Oils	13	14	14	12
Fish, Meat and Poultry	133	154	157	147
Fish and Products	102	113	111	99
Meat and Products	23	32	37	34
Poultry and Products	7	10	9	14
Eggs and Egg Products	8	9	10	12
Milk and Milk Products	42	44	43	44
Dried Beans, Nuts and Seeds	8	10	10	10
Vegetables	145	130	111	106
Green Leafy and Yellow Veg	34	37	29	30
Other Vegetables	111	93	82	76
Fruits	104	102	107	77
Vitamins C-Rich Fruits	30	18	24	21
Other Fruits	74	84	83	56
Miscellaneous	21	32	26	19

**3. Fishery Imports, By Major Country Of Origin
In Terms of Value, 2002**

Major Countries	Quantity (MT)	FOB Value (000 P)	FOB Value (000 \$)
1. U S A	29,585	700,630	13,307
2. Peru	25,101	626,008	11,890
3. Canary Island	31,519	484,059	9,194
4. China, People's Rep. of	16,505	338,204	6,424
5. Thailand	10,232	289,934	5,507
6. Taiwan	11,271	270,722	5,142
7. Indonesia	9,741	239,317	4,545
8. Mauritania	14,949	228,256	4,335
9. Japan	6,765	226,870	4,309
10. Chile	5,252	188,408	3,578
Total major countries	160,920	3,592,408	68,231
Other Countries	57,665	1,480,930	28,382
Grand Total	218,585	5,073,338	96,613



2. Mean Per Capita Food Consumption, 1993 ^{a/}

Food Group/Subgroup	Consumption		Percent of Total Food Intake*
	(Raw, "as purchased")		
	kg/yr	g/day	
All Foods	293	803	100.1
Cereals and Cereal Product	124	340	42.3
Rice and Products	103	282	35.1
Corn and Products	13	36	4.5
Other Cereals and Products	8	22	2.7
Starchy Roots and Tubers	6	17	2.1
Sugars and Syrups	7	19	2.4
Fats and Oils	4	12	1.5
Fish, Meat and Poultry	54	147	18.3
Fish and Products	36	99	12.3
Meat and Products	12	34	4.2
Poultry and Products	5	14	1.7
Eggs and Egg Products	4	12	1.5
Milk and Milk Products	16	44	5.5
Whole Milk	13	35	4.4
Milk Products	3	9	1.1
Dried Beans, Nuts and Seeds	4	10	1.2
Vegetables	39	106	13.2
Vegetable	11	30	3.7
Other Vegetables	28	76	9.5
Fruits	28	77	9.6
Vitamin C-Rich Fruits	8	21	2.6
Other Fruits	20	56	7
Miscellaneous	7	19	2.5
Beverages	3	9	1.1
Condiments and others	4	11	1.4

^{a/} available in the kitchen, including inedible and edible wastage

* Numbers may not add up to 100.00 due to rounding off

3. Mean One-Day Per Capita Food Consumption, 1993 ^{a/}

Food Group/Subgroup	Phils.	Ilocos	Cagayan Valley	Central Luzon	Southern Tagalog	Bicol	Western Visayas	Central Visayas
Cereals & Cereal Products	340	361	371	340	325	322	338	353
Rice & Products	282	344	344	310	291	292	307	179
Corn & Products	36	2	7	6	2	8	19	157
Other Cereals & Products	22	15	20	24	32	23	12	17
Starchy Roots & Tubers	17	8	19	12	12	28	5	15
Sugars and Syrups	19	18	16	22	24	17	15	11
Fats and Oils	12	10	10	15	15	16	10	8
Vegetables	106	172	174	120	107	100	78	61
Green & Leafy Yellow Vegetables	30	40	38	19	23	27	35	30
Other Vegetables	76	133	137	102	84	73	43	32
Fruits	77	68	51	94	118	78	66	41
Vit. C-Rich Fruits	21	24	8	37	30	13	20	4
Other Fruits	56	43	43	57	88	64	46	37
Fish, Meat & Poultry	147	140	107	156	144	133	142	165
Fish & Products	99	84	66	78	87	104	114	139
Meat & Products	34	47	33	45	45	22	16	19
Poultry & Products	14	9	8	33	11	8	12	8
Eggs	12	13	9	19	16	9	8	8
Milk & Milk Products	44	32	31	73	52	35	34	27
Whole Milk	35	29	28	43	42	29	31	27
Milk Products	9	3	2	30	10	6	3	n
Dried Beans, Nuts & Seeds	10	12	11	13	11	6	7	10
Miscellaneous (Beverages, condiments & others)	19	10	14	24	20	17	21	14

a/ Expressed as raw, "as purchased", in g/day

Eastern Visayas	Western Mindanao	Northern Mindanao	Southern Mindanao	Central Mindanao	CAR	CARAGA	ARMM	NCR
363	358	383	371	366	356	371	357	293
321	228	247	232	299	330	330	331	251
22	118	121	126	57	3	31	6	
20	12	16	13	10	23	10	20	4
31	15	13	20	9	23	26	70	1
15	13	18	18	16	23	12	24	2
9	118	11	12	10	14	10	12	1
59	49	112	123	119	177	92	106	8
17	69	39	51	52	38	28	35	1
42		72	72	68	139	64	71	6
62	74	70	69	85	73	57	83	7
7	17	15	14	8	16	2	19	3
55	58	55	55	77	57	55	64	4
150	161	145	143	124	122	121	135	18
127	119	112	115	91	54	100	121	9
15	21	24	20	27	54	15	6	6
8	21	9	8	6	14	6	7	2
5	11	11	12	18	11	9	8	1
21	22	24	26	23	79	18	14	8
20	21	21	25	18	42	18	13	6
1	1	3	1	6	37	0	1	1
3	10	10	11	8	14	9	5	1
20	17	20	19	20	16	17	12	2

A. PER CAPITA FOOD CONSUMPTION OF FISH AND FISHERY PRODUCTS, 1993

Fish and Other Products		Total (Kg/Year)
		36
1.	FISH	24
1.1	Fresh Fish	4
	Tulingan (Frigate Tuna)	1
	Bangus (Milkfish)	4
	Galunggong (Roundscad)	1
	Dilis, Buo (Anchovy)	1
	Alumahan (Indian Mackerel)	2
	Tamban (Sardines)	1
	Dalagang Bukid (Fusilier)	1
	Sapsap (Slipmouth)	1
	Bisugo (Threadfin Bream)	1
	Tilapia (Cichlid)	1
	Albakora/Tambakol	n
	Balila/Espada	n
	Hasa-hasa	n
	Lapu-lapu	1
	Matangbaka	n
	Maya-Maya	n
	Salay-salay	n
	Silinyasi/Tunsoy	n
	Tanigue	4
	Others (fresh fish & cooked fish recipe)	4
1.2	Dried Fish (as fresh fish)	4
1.3	Processed Fish *	1
	Bagoong (as fresh fish)	n
	Patis	2
	Canned Fish (sardines, mackerel, salmon, e)	1
	Smoked fish (all tinapa type)	4
1.4	Crustaceans and Mollusks	n
	Shrimp (all type)	1
	Crabs	1
	Squid/Octopus	1
	Tahong	1
	Others (fresh)	n
	Dried and Processed (as fresh)	n
	Bagoong (as fresh)	n

Notes:

- a) Raw as purchased weight or as available in the kitchen including inedible and edible wastage.
- b) Breakdown don't add up to total due to roundings
- c) N- negligible (less than 0.5 grams)

**B. PRODUCTIVE AREA IN AQUACULTURE FISHERIES,
BY CULTURE SYSTEM AND REGION, 1995***
(in ha)

Region	Total Aquaculture	Fishpond		Fishpen in Fresh & Marine Water	Fishcage in Fresh & Marine Water	Mariculture		
		Brackish Water	Fresh Water			Oyster	Mussel	Seaweed
NCR	4,395.30	4182	0.00	196.88	3.53		12.89	
CAR	112.22	0	65.03		47.19			
I	9,619.00	8726	797.46	1.35	2.00	92.19		
II	1,874.68	1367	490.32		12.87	4.49		
III	38,884.44	34368	4,427.44	5.06	32.28	51.66		
IV	14,668.48	10168	73.39	3,992.38	365.23	8.13	24.81	36.54
V	6,312.59	5433	25.37		541.04	0.24	30.92	282.02
VI	29,862.23	29393	84.03		0.37	58.20	283.26	43.37
VII	6,083.15	5689	10.59			2.15	0.10	381.31
VIII	2,469.42	2433	5.29				28.22	2.91
IX	29,286.66	27304	15.04	5.86		9.84	0.78	1,951.15
X	932.92	919	11.91		0.01			2.00
XI	6,002.04	5299	316.91	4.15	354.92	1.09		25.97
XII	3,518.23	3338	176.23				0.25	3.75
XIII	3,524.55	3501	20.03		0.15			3.35
ARMM	4,688.62	1077	3.67	0.15	9.36			3,598.44
Total	162,234.54	143,197	6,522.71	4,205.83	1,368.95	227.98	381.22	6,330.84

* This refers to the area being utilized during the reference period

C. WORLD FISHERIES PRODUCTION OF FISH, CRUSTACEANS, MOLLUSCS AND AQUATIC PLANTS
 (includes seaweeds), BY CAPTURE AND AQUACULTURE, BY MAJOR PRODUCERS, 2000
 (in 000 MT) ^{1/1}

Major Countries	Total		Fish Crustaceans & Molluscs			Aquatic Plants (includes seaweeds)		
	(000 MT)	% Share	Capture	Aquaculture	Total	Capture	Aquaculture	Total
1. China	49,636	35.0	16,987	24,581	41,568	204	7,864	8,068
2. Peru	10,667	7.5	10,659	7	10,665	1	-	1
3. Japan	6,400	4.5	4,989	763	5,752	119	529	648
4. India	5,789	4.1	3,594	2,095	5,689	100	-	100
5. U. S. A.	5,216	3.7	4,745	428	5,174	42	-	42
6. Indonesia	5,152	3.6	4,140	789	4,929	18	205	223
7. Chile	4,973	3.5	4,300	392	4,692	247	33	281
8. Russian Fed.	4,104	2.9	3,974	74	4,048	54	3	57
9. Thailand	3,631	2.6	2,924	707	3,631	-	-	-
10. Norway	3,384	2.4	2,703	488	3,191	192	-	192
11. Philippines	2,937	2.1	1,893	388	2,281	1	657	657
12. Korea Rep.	2,534	1.8	1,823	323	2,146	13	375	388
13. Other Countries	37,361	26.4	32,117	4,551	36,668	228	465	693
World Total	141,783	100.0	94,849	35,585	130,434	1,219	10,130	11,349

**D. WORLD AQUACULTURE PRODUCTION OF FISH,
CRUSTACEANS, MOLLUSCS, ETC. BY PRINCIPAL
PRODUCERS, 2000**

Country	Production (000 MT)	% Share to Total	Value (US\$' 000)	% Share to Total
1. China	24,581	69.1	24,117	47.4
2. India	2,095	5.9	2,186	4.3
3. Indonesia	789	2.2	2,246	4.4
4. Japan	763	2.1	3,317	6.5
5. Thailand	707	2.0	2,431	4.8
6. Bangladesh	657	1.8	1,159	2.3
7. Vietnam	511	1.4	1,089	2.1
8. Norway	488	1.4	1359	2.7
9. U S A	428	1.2	870	1.7
10. Chile	392	1.1	1,250	2.5
11. Philippines	388	1.1	680	1.3
12. Egypt.	340	1.0	815	1.6
13. Korea Rep.	323	0.9	574	1.1
14. Spain	312	0.9	382	0.8
15. Other Countries	2,813	7.9	8,383	16.5
World Total	35,585	100.0	50,859	100.0

**E. WORLD AQUACULTURE PRODUCTION OF
AQUATIC PLANTS (Includes Seaweeds)
BY PRINCIPAL PRODUCERS, 2000**

Country	Production (000 MT)	% Share to Total
1. China, Main	7,864	77.6
2. Philippines	657	6.5
3. Japan	529	5.2
4. Korea Rep.	375	3.7
5. Indonesia	205	2.0
6. Other Countries	502	5.0
World Total	10,131	100.0

**F. PRICES OF SELECTED FISH SPECIES,
PHILIPPINES, 2002 ^{12/}**

Species	Wholesale	Retail
1. Indian mackerel (Alumahan)	61.53	72.69
2. Milkfish (Bangus)	61.83	78.92
3. Threadfin bream (Bisugo)	67.18	93.27
4. Caesio (Dalagang Bukid)	64.20	93.96
5. Anchovies (Dilis)	32.95	49.45
6. Roundscad (Galongong)	43.80	60.61
7. Slipmouth (Sapsap)	38.68	75.36
8. Tiger prawn (Sugpo)	329.06	360.55
9. Tilapia	43.53	57.71
10. Frigate tuna (Tulingan)	46.84	57.96
11. Blue crab (Alimasag)	63.14	100.33

ENDNOTES

Sources of Data:

NAMRIA, 1990

1992 Fishery Statistics, Bureau of Agricultural Statistics (BAS)

This refers to fishpond area acquired by the operator whether utilized or not during the reference period.

This includes nursery and transition ponds and undeveloped areas.

National Accounts of the Philippines, May 2003,

National Statistical Coordination Board (NSCB)

1980 Census of Fisheries

Trade Division, National Statistics Office (NSO)

Fishery Statistics Division, Bureau of Agricultural Statistics (BAS)

Directory of Philippine Wetlands, Volume II, AWBPF

BFAR Regional Yearbook, 2000

BFAR Regulatory and Quarantine Division

Food and Nutrition Research Institute Website, (<http://www.fnri.dost.gov.ph>.)

FAO Website (<http://www.fao.org>.)

Agricultural Marketing Statistical Analysis Division (AMSAD, BAS)

Notes

Notes

100



Department of Agriculture
BUREAU OF FISHERIES AND AQUATIC RESOURCES
860 Arcadia Bldg., Quezon Avenue, Quezon City
Tel Nos. 372-5057 * 372-5043
Fax Nos. 372-5048 * 372-5061
E-mail: msarmiento@bfar.da.gov.ph

Prepared by : Fisheries Policy and Economics Division, BFAR
September 2003