

PHILIPPINE FISHERIES PROFILE, 2001



Republic of the Philippines
Department of Agriculture
BUREAU OF FISHERIES AND AQUATIC RESOURCES

FOREWORD

The Bureau of Fisheries and Aquatic Resources (BFAR) publishes yearly the Philippine Fisheries Profile (PEP) based on the latest available data gathered from the different concerned agencies. This report aims to provide planners, decision-makers, researchers and other users with handy and concise information on Philippine fisheries.

The PEP focuses on the information/data on the Fisheries Contribution to the Philippine Economy, Employment, Fish Production (sector, sub-sector, region, major species), Export and Import Performance and Other Fishery Industry Information such as per capita food consumption, the Philippine contribution to total world production of fish and seaweeds, and the wholesale and retail prices of major commodities. Corresponding summary tables and graphs are also developed to further enhance the presentation of fisheries data and information.

We gratefully acknowledge the support and cooperation of the following agencies in making the data available to BFAR: Bureau of Agricultural Statistics (BAS), National Statistics Office (NSO), National Statistical Coordination Board (NSCB), Food and Nutrition Research Institute (FNRI) and Food and Agricultural Organization (FAO).

It is hoped that this reference material will serve its purpose to the fullest.


MALCOLM I. SARMIENTO, JR.
Director

TABLE OF CONTENTS

FOREWORD	i
HIGHLIGHTS	ii
I. FISHERY RESOURCES	
A. Marine Resources	3
B. Inland Resources	3
II. FISHERIES CONTRIBUTION TO THE ECONOMY, 2001	
A. Fisheries Contribution to Total GDP	4
B. Fisheries Contribution to GVA Agricultural Sector	4
C. Employment	5
D. Balance of Trade	5
E. Total Fish Production, by Sector, 2001	6
F. Fish Production, by Sector and Region, 2001	7
G. Fish Production, by Sector, 1992-2001	8
H. Five-Year Fish Production, Trend 1997-2001	9
III. AQUACULTURE PRODUCTION, 2001	
A. Summary of Aquaculture Production by Culture Environment and Region, 2001	14
B. Aquaculture Production, by Culture Environment, Region and Species, 2001	15
1. Production from Brackishwater Fishpond	15
2. Production from Freshwater Fishpond	16
3. Production from Marine Waters, 2001	18
4. Production from Mariculture, 2001	20
C. Major Species Produced in Aquaculture Fisheries, 2001	21
D. Ten Major Lakes of the Philippines	21

VII. OTHER FISHERIES INFORMATION

A. Food Consumption:	
1. Comparison of Mean One-Day Per Capita Food Consumption: 1978, 1982, 1987 and 1993	48
2. Mean Per Capita Food Consumption, 1993	49
3. Mean One-Day Per Capita Food Consumption, 1993	50
4. Per Capita Food Consumption of Fish and Fishery Products, 1993	52
B. Productive Area in Aquaculture Fisheries, By Culture System and Region, 1995	53
C. World Fisheries Production of Fish, Crustaceans, Molluscs and Aquatic Plants (includes seaweeds), by Capture and Aquaculture, by Major Producers, 1999	54
D. World Aquaculture Production of Fish, Crustaceans, Molluscs, etc. by Principal Producers, 1999	55
E. World Aquaculture Production of Aquatic Plants (Includes Seaweeds) by Principal Producers, 1999	56
F. Prices of Selected Fish Species, Philippines, 2001	57

LIST OF FIGURES

1. Philippine Marine Jurisdictional Boundaries	2
2. Total Fish Production, by Sector, 2001	10
3. Volume of Fish Production, by Sector, 1992-2001	11
3. Value of Fish Production, by Sector, 1992-2001	11
4. Major Fisheries Export in Terms of Value, 2001	42

ENDNOTES

PERFORMANCE OF THE FISHING INDUSTRY

1. Fisheries production increased from 2.63 million metric tons valued at P65.4 billion in 1992 to 3.17 million metric tons valued at P107.2 billion in 2001. The annual growth rates attained for the period were 2.1% in volume and 5.6% in value.
2. Fisheries production reached 3,166,530 metric tons in 2001, an increase of 5.8 percent over the previous year's 2,993,332 metric tons or 2.4 percent growth in 2000. Aquaculture fisheries production which accounted for 38 percent of the total, increased to 1,220,456 metric tons while commercial and municipal fisheries contributed an equal share of 31 percent or 976,539 and 969,535 metric tons respectively. This shows the growing importance of aquaculture as a source of fish supply.

Production growth by sector in 2001 registered highest growth of 10.8% in aquaculture; 2.5% for municipal fisheries and 3.2% in commercial fisheries.

In terms of value, growth of 8.6% was realized from a total of P98.6 billion attained in 2000 to P107.2 billion in 2001. All sub-sectors exhibited positive growth with 14.6% in aquaculture, 6.5% in commercial and 5.0% in municipal fisheries.
3. Among the major regional contributors to total fish production, Region IV (Southern Tagalog) remained as the largest producer with its 19.6% share. Autonomous Region for Muslim Mindanao or ARMM accounted for the second highest of 15.9%, where seaweed was the major product. Western Mindanao or Region IX accounted for 12.6% and ranked 3rd.
4. Major species produced in aquaculture fisheries for 2001 were the following: Seaweeds, 785,795 MT (64.4%); Milkfish, 225,337 MT (18.5%); Tilapia, 106,745 MT (8.7%); Shrimp/prawns, 42,390 MT (3.5%); and other species, 60,188 MT (4.9%).

I. FISHERY RESOURCES

II. FISHERIES CONTRIBUTION
TO THE ECONOMY, 2001

2001 PHILIPPINE FISHERIES PROFILE

I. FISHERY RESOURCES

A. Marine Resources

- Total Territorial Water Area (including the EEZ) 2,200,000 sq. km.
 - a. Coastal 266,000 sq. km.
 - b. Oceanic 1,934,000 sq. km.
- Shelf Area (Depth 200 m) 184,600 sq. km.
- Coral Reef Area 27,000 sq. km.
(Within the 10-20 fathoms where reef fisheries occur)
- Coastline (length) 17,460 km

B. Inland Resources

1. Swamplands 246,063 ha
 - a. Freshwater 106,328 ha
 - b. Brackishwater ^{1/} 139,735 ha
2. Existing Fishpond 253,854 ha
 - a. Freshwater 14,531 ha
 - b. Brackishwater ^{2/} 239,323 ha
3. Other Inland Resources 250,000 ha
 - a. Lakes 200,000 ha
 - b. Rivers 31,000 ha
 - c. Reservoirs 19,000 ha

C. Employment ^{4/}

1. Aquaculture	256,480 persons
2. Municipal	675,677 persons
3. Commercial	56,715 persons
Total	990,872 persons

D. Balance of Trade ^{5/}

	2001			2000		
	Quantity (MT)	FOB Value (P M)	(\$ M)	Quantity (MT)	FOB Value (P M)	(\$ M)
Fishery Exports	159,069	22,723	458.8	199,719	20,422.8	506.8
Fishery Imports	179,994	3,815	75.7	242,464	3,847.5	93.8
Trade Balance	(20,925)	18,908	383.1	(42,745)	16,575.3	413.0

F. Fish Production, by Sector and Region, 2001 ⁷⁷
 (in MT)

Region	Commercial	Municipal	Aquaculture	Total	% share to total
NCR	140,933	4,166	1,388	146,487	4.63
CAR	0	1,150	2,420	3,570	0.11
I	2,525	22,414	38,678	63,617	2.01
II	14,297	19,157	4,963	38,417	1.21
III	14,091	12,795	154,478	181,364	5.73
IV	128,408	241,882	249,568	619,858	19.58
V	32,585	87,478	30,451	150,514	4.75
VI	122,120	135,928	99,548	357,596	11.29
VII	61,361	44,736	85,434	191,531	6.05
VIII	36,169	42,270	12,879	91,318	2.88
IX	156,008	120,923	121,152	398,083	12.57
X	34,264	27,477	22,446	84,187	2.66
XI	11,355	27,927	9,898	49,180	1.55
XII	142,425	36,621	13,462	192,508	6.08
XIII	4,774	68,041	20,389	93,204	2.94
ARMM	75,224	76,570	353,302	505,096	15.95
Total	976,539	969,535	1,220,456	3,166,530	100.00

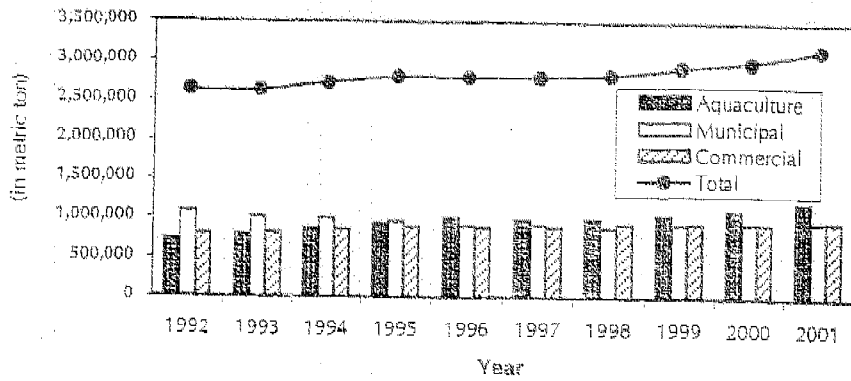
2. Value of Fish Production (in million pesos)

Year	Aquaculture	Municipal	Commercial	Total
2001	36,883	34,222	36,089	107,194
2000	32,183	32,596	33,879	98,658
1999	29,046	31,034	32,242	92,322
1998	26,430	28,966	29,737	85,133
1997	27,289	27,393	25,935	80,617
1996	33,347	25,373	24,555	83,275
1995	33,658	26,464	23,065	83,187
1994	35,003	24,475	20,714	80,192
1993	30,163	22,031	18,021	70,215
1992	25,986	22,656	16,801	65,443

H. Five Year Fish Production, Trend 1997-2001

Year	Quantity (M T)	% Increase/ (Decrease)	Value (000 P)	% Increase (Decrease)
2001	3,166,530	5.79	107,193,786	8.65
2000	2,993,332	2.38	98,657,631	6.86
1999	2,923,772	3.33	92,322,324	8.44
1998	2,829,520	1.29	85,133,055	5.60
1997	2,793,556	-0.09	80,617,090	-3.19

VOLUME OF FISH PRODUCTION, BY SECTOR 1992-2001



VALUE OF FISH PRODUCTION, BY SECTOR 1992-2001

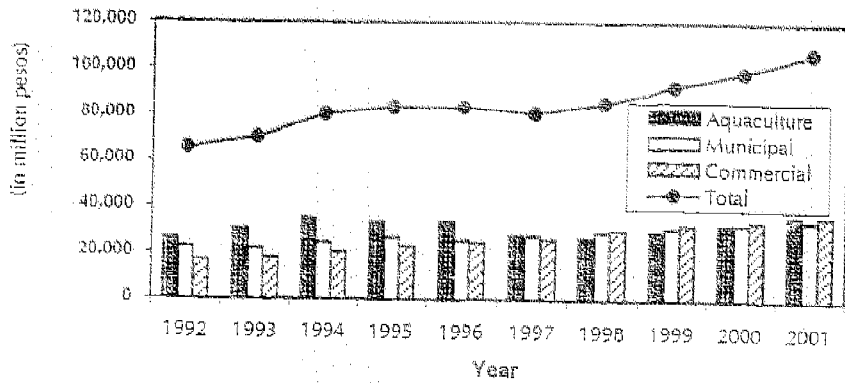


Figure 3

III. AQUACULTURE PRODUCTION, 2001

This includes production from the following:

- Brackishwater fishpond
- Freshwater fishpond
- Fishpen and fishcage in fresh and marine waters
- Mariculture of oyster, mussel and seaweeds

B. AQUACULTURE PRODUCTION BY CULTURE ENVIRONMENT, REGION AND SPECIES, 2001 //

1. Production from Brackishwater Fishpond (in MT)

Region	Total	Milkfish	Tiger Prawn	W. Shrimp & Endeavor Prawn	Others
NCR	635	625	0	0	10
I	24,880	23,826	221	106	727
II	1,025	373	70	72	510
III	98,073	70,349	19,686	23	8,015
IV	17,224	15,300	1,593	221	110
V	3,862	1,525	512	194	1,631
VI	57,934	55,442	1,796	111	585
VII	8,279	6,576	1,668	0	35
VIII	1,967	1,713	228	0	26
IX	20,544	12,284	6,628	600	1,032
X	11,797	5,570	5,811	83	333
XI	7,332	7,022	65	14	231
XII	8,053	7,142	489	2	420
XIII	3,880	1,948	1,653	137	142
ARMM	2,635	1,899	278	129	329
TOTAL	268,120	211,594	40,698	1,692	14,136

Others species:	14,136
Tilapia	9,499
Mudcrab	4,585
Grouper	39
Siganid	13

2. Production from Freshwater Fishpond, 2001

(in MT)

a) Fishpond

Region	Total	Tilapia	Catfish	Mudfish	Carp	Others
CAR	513	507	0	0	6	
I	2,503	2,412	20	30	8	33
II	2,215	1,979	172	54	5	5
III	48,058	45,755	995	1,132	121	55
IV	1,447	1,433	0	7	6	1
V	129	96	33	0		
VI	290	166	124	0		
VII	28	28	0	0		
VIII	66	66	0	0		
IX	87	79	0	8		
X	582	308	16	127	131	
XI	520	409	91	11	7	2
XII	1,111	953	72	70		16
XIII	92	84	0	0	8	
ARMM	37	37	0	0		
TOTAL	57,678	54,312	1,523	1,439	292	112

Other species	112
Gourami	44
Bangus	16
Not Specified	52

b) Freshwater Fishcage

Region	Total	Tilapia	Carp	Milkfish
NCR	77	37	40	
CAR	1,907	1,907		
I	9	9		
II	1,483	1,483		
III	59	59		
IV	30,000	29,709	291	
V	4,595	4,595		
XI	4	4		
XII	3,876	2,925		951
XIII	15	15		
ARMM	36	36		
Total	42,061	40,779	331	951

c) Freshwater Fishpen

Region	Total	Tilapia	Milkfish	Carp
NCR	676			676
III	27	27		
IV	23,196	2,092	2,159	18,945
ARMM	28	28		
TOTAL	23,927	2,147	2,835	18,945

3. Production from Marine Waters, 2001 (in M1)

a) Marine Fishcage

Region	Total	Milkfish	Grouper	Others
I	3,185	3,179	n	6
II	8	1	0	7
III	26	26	0	0
IV	2	2	0	0
V	42	36	6	0
VI	19	3	16	0
VII	300	298	2	0
VIII	26	0	26	0
IX	52	28	12	12
X	29	19	4	6
XI	444	421	13	10
XII	420	265	0	155
XIII	28	4	3	21
ARMM	1	0	0	1
TOTAL	4,582	4,282	82	218

n - negligible

Other species:	218
Mudcrab	4
Siganid	24
Spiny Lobster	15
Tilapia	7
Not specified	168

b) Marine Fishpen

Region	Total	Milkfish	Siganid	Grouper	Others
I	4,744	4,741	1		2
III	70	70			
IV	22	21		1	
VI	45	45			
VII	47	46		1	
IX	41	10	8	4	19
X	12	0	8	4	
XI	721	721	0		
XII	2	2	0		
XIII	29	3	10	2	14
ARMM	5			3	2
TOTAL	5,738	5,659	27	15	37

Other species:	37
Mudcrab	19
Snapper	7
Tilapia	2
Lobster	2
Not specified	7

4. Production from Mariculture, 2001
(in MT)

Region	Total	Oyster	Mussels	Seaweeds
I	3,357	3,357	0	0
II	232	232	0	0
III	8,165	8,165	0	0
IV	177,677	1,722	4,322	171,633
V	21,823	35	710	21,078
VI	41,260	4,557	5,943	30,760
VII	76,780	133	0	76,647
VIII	10,820	0	2,524	8,296
IX	100,428	232	14	100,182
X	10,026	0	0	10,026
XI	877	609	0	268
XIII	16,345	0	0	16,345
ARMM	350,560	0	0	350,560
TOTAL	818,350	19,042	13,513	785,795

IV. MUNICIPAL FISHERIES PRODUCTION, 2001

This includes fishing done in coastal and inland waters with or without the use of boats of 3 gross tons or less.

C. MAJOR SPECIES PRODUCED IN AQUACULTURE FISHERIES, 2001

Species	Quantity (MT)	Percent (%)
Seaweeds	785,795	64.4
Milkfish (Bangus)	225,337	18.5
Tilapia (cichlid)	106,746	8.7
Shrimps/Prawns	42,390	3.5
Others	60,188	4.9
Total	1,220,456	100.0

D. TEN MAJOR LAKES OF THE PHILIPPINES ^{a/}

Name of Lakes	Location	Area (ha)
1. Laguna de Bay	Laguna and Rizal	90,000
2. Lake Lanao	Lanao del Sur	34,700
3. Taal Lake	Batangas	23,400
4. Lake Mainit	Surigao del Norte	
	Agusan del Norte	14,000
5. Naujan Lake	Oriental Mindoro	10,900
6. Lake Buluan	Maguindanao	
	Sultan Kudarat	6,500
7. Lake Bato	Camarines Sur	3,800
8. Lake Buhi	Camarines Sur	1,800
9. Lake Dapao	Lanao del Sur	1,000
10. Lake Sebu	South Cotabato	964
Total		187,064

^{a/}Source of data: Directory of Philippine Wetlands
Volume II, AWBPF.

A. MUNICIPAL FISHERIES PRODUCTION, BY REGION, 2001
(in MT)

Region	Marine	Inland	Total
NCR	4,166	0	4,166
CAR	0	1,150	1,150
I	21,583	831	22,414
II	14,176	4,981	19,157
III	9,893	2,902	12,795
IV	154,247	87,635	241,882
V	86,408	1,070	87,478
VI	134,247	1,681	135,928
VII	44,653	83	44,736
VIII	41,640	630	42,270
IX	120,574	349	120,923
X	26,616	861	27,477
XI	27,705	222	27,927
XII	23,528	13,093	36,621
XIII	64,936	3,105	68,041
ARMM	58,816	17,754	76,570
TOTAL	833,188	136,347	969,535

**B. MARINE MUNICIPAL FISH CATCH,
BY MAJOR FISH SPECIES, 2001 ***

Major Species	Total	% to Total
1. Frigate Tuna (Tulingan)	55,873	6.7
2. Yellowfin tuna (Tambakol)	47,395	5.7
3. Fimbrated sardines (Tunsoy)	44,336	5.3
4. Anchovies (Dilis)	42,921	5.2
5. Big-eyed scad (Matang-baka)	42,711	5.1
6. Indian sardines (Tamban)	39,916	4.8
7. Blue crab (Alimasag)	35,920	4.3
8. Squid (Pusit)	33,677	4.0
9. Roundscad (Galunggong)	32,108	3.9
10. Skipjack (Gulyasan)	31,472	3.8
11. Other species	426,859	51.2
TOTAL	833,188	100.0

* Preliminary data

**C. AVERAGE PERCENTAGE SHARE OF MARINE MUNICIPAL
FISHERIES PRODUCTION BY MAJOR FISHING GROUNDS
1992 - 1995
(In MT)**

Fishing Ground	Total	% to Total
1. Visayan Sea	92,885	11.50
2. Bohol Sea	84,305	10.44
3. East Sulu Sea	78,491	9.72
4. Moro Gulf	74,765	9.26
5. Guimaras Strait	55,106	6.82
6. South Sulu Sea	44,000	5.45
7. West Palawan Waters	38,444	4.76
8. Lamon Bay	37,138	4.60
9. Leyte Gulf	36,587	4.53
10. Samar Sea	35,622	4.41
11. Davao Gulf	28,365	3.51
12. Cuyo Pass	27,253	3.37
13. Tayabas Bay	22,500	2.79
14. Others	152,063	18.83
TOTAL	807,524	100.00

D. NUMBER OF MUNICIPAL FISHING BANCAS,
BY REGION, 2000 ^{9/}

Region	Total	Motorized	Non-Motorized
CAR	660	49	611
I	17,678	11,641	6,037
II	3,304	1,502	1,802
III	27,038	18,375	8,663
IV	69,927	26,569	43,358
V	54,715	19,453	35,262
VI	41,808	16,234	25,574
VII	56,142	19,100	37,042
VIII	58,068	16,255	41,813
IX	45,650	13,280	32,370
X	9,041	2,472	6,569
XI	24,099	11,382	12,717
XII	10,759	2,671	8,088
XIII	31,283	11,202	20,081
ARMM	19,635	7,442	12,193
TOTAL	469,807	177,627	292,180
PERCENT			
%	100	38	62

V. COMMERCIAL FISHERIES PRODUCTION, 2001

Fishing with the use of fishing vessels
more than 3 gross tons.

**A. COMMERCIAL FISH PRODUCTION BY REGION
AND BY TYPE OF LANDING CENTERS, 2001**

Region	Total	Private	PFDA	Traditional
NCR	140,933		133,744	7,189
CAR				
I	2,525		990	1,535
II	14,297			14,297
III	14,091			14,091
IV	128,408		5,040	123,368
V	32,585	10,019		22,566
VI	122,120	4,912	9,941	107,267
VII	61,361			61,361
VIII	36,169			36,169
IX	156,008	52,878	15,606	87,524
X	34,264	2,352		31,912
XI	11,355	60	5,084	6,211
XII	142,425	100,402	38,619	3,404
XIII	4,774			4,774
ARMM	75,224			75,224
Total	976,539	170,623	209,024	596,892

**B. COMMERCIAL FISHERIES PRODUCTION,
BY MAJOR FISH SPECIES, 2001 ***

Major Species	Total (MT)	% to Total
1. Roundscad (Galunggong)	250,679	25.7
2. Indian Sardines (Tamban)	153,741	15.7
3. Skipjack (Gulyasan)	80,766	8.3
4. Frigate Tuna (Tulingan)	60,032	6.1
5. Fimbrated Sardines (Tunsoy)	50,935	5.2
6. Yellowfin Tuna (Tambakol)	49,055	5.0
7. Anchovies (Dilis)	39,191	4.0
8. Slipmouth (Sapsap)	38,722	4.0
9. Big-eyed scad (Matang-baka)	36,596	3.7
10. Indian Mackerel (Alumahan)	31,804	3.3
11. Other Species	185,018	18.9
TOTAL	976,539	100.0

* Preliminary data

**C. AVERAGE PERCENTAGE SHARE OF TOTAL COMMERCIAL
FISH PRODUCTION BY MAJOR FISHING GROUNDS
1992 - 1995
(In Metric tons)**

Fishing Ground	Total	% to Total
1. West Palawan Waters	158,220	19.69
2. South Sulu Sea	149,243	18.57
3. Visayan Sea	137,942	17.17
4. Moro Gulf	98,050	12.20
6. Bohol Sea	34,263	4.26
7. East Sulu Sea	29,071	3.62
8. International Waters	25,558	3.18
9. Samar Sea	23,385	2.91
10. Guimaras Strait	23,382	2.91
11. Manila Bay	21,899	2.73
12. Tayabas Bay	19,826	2.47
13. Sibuyan Sea	15,434	1.92
14. Others	67,272	8.37
TOTAL	803,545	100.00

**D. NUMBER OF COMMERCIAL FISHING VESSEL
BY REGION, 1999* ^{10/} (Catcher and Accessory Boat)**

Region	Number	Gross Tonnage
NCR	1,351	158,509.59
I	113	1,832.99
II	64	717.94
III	40	1,080.67
IV	221	3,857.38
V	160	4,385.85
VI	404	25,674.39
VII	94	2,053.81
VIII	124	1,740.27
IX	392	22,758.66
X	43	1,215.10
XI	555	45,893.86
XII	7	85.09
XIII	26	293.86
ARMM	7	181.94
Total	3,601	270,281.40

VI. EXTERNAL TRADE

A. EXPORTS ^{5/}

1. Export of Fish and Fishery Products by Kind, Quantity and Value, 2001

Commodity/Kind	Quantity (MT)	FOB Value	
		(000 P)	(000 \$)
1. Fish Crustaceans, Mollusks, etc. and Preparation	114,791	18,479,850	373,164
a. Fish fresh (live or dead) chilled or frozen	41,397	4,295,247	86,734
b. Fish, dried, salted or in brine, smoked fish	1,534	230,090	4,646
c. Crustaceans, mollusks and aquatic invertebrates	34,042	9,666,784	195,202
d. Fish and other aquatic invertebrate, prepared/ preserved	37,818	4,287,729	86,582
2. Shells and By-Products	2,233	649,878	13,123
3. Miscellaneous and Other Fishery Products	42,045	3,593,480	72,563
Grand Total	159,069	22,723,208	458,850

2. Major Fishery Exports in Terms of Value, 2001

Commodity/Kind	Quantity (MT)	FOB Value (P 000)	FOB Value (\$ 000)
1. Shrimp/Prawn	12,757	6,226,503	125,732
Fresh/chilled/frozen	12,757	6,226,503	125,732
2. Tuna	56,752	5,871,128	118,557
Fresh/chilled/frozen	22,072	2,351,090	47,476
Smoked/dried	771	112,789	2,278
Canned	33,909	3,407,249	68,803
3. Seaweeds	41,267	3,540,460	71,492
Seaweeds & other Algae, nes	31,644	1,612,057	32,552
Seaweeds & algae used for food	28	1,905	38
Carrageenan	8,648	1,912,428	38,618
Kelp powder	947	14,070	284
4. Crabs/crabs fat	5,652	1,524,925	30,792
Frozen	96	14,914	301
Other than frozen	4,815	945,693	19,096
Prepared/preserved	741	564,318	11,395
5. Octopus	11,806	1,430,478	28,886
Fresh/chilled	176	19,072	385
Frozen/dried/salted	11,630	1,411,406	28,501

Commodity/Kind	Quantity (MT)	FOB Value (P 000)	FOB Value (\$ 000)
6. Lapu-lapu, live other than fry	4,905	574,978	11,611
7. Cuttlefish/squid	1,687	437,859	8,842
Fresh/chilled	33	7,559	153
Frozen/dried/salted	1,612	422,925	8,540
Prepared/preserved	42	7,375	149
8. Cultured Pearls, Worked	1	392,361	7,923
9. Roundscad	3,838	322,817	6,519
Fresh/chilled/frozen	3,712	302,136	6,101
Smoked	126	20,681	418
10. Ornamental fish, live	5,535	320,500	6,472
Total major commodities	144,200	20,642,009	416,826
Total of other commodities	14,869	2,081,199	42,024
Grand Total	159,069	22,723,208	458,850

Source basic of data: National Statistics office (NSO)

3. Major Destinations of Top Three Fishery Exports by Kind, Quantity and Value, 2001

Commodity/Kind	Quantity (MT)	FOB Value (000 P)	FOB Value (000 \$)
1. Shrimp/Prawn	12,757	6,226,503	125,732
Fresh/chilled/frozen	12,757	6,226,503	125,732
Japan	8,788	4,464,211	90,146
U S A	1,644	764,269	15,433
Korea	1,206	533,241	10,768
Others	1,119	464,782	9,385
2. Tuna	56,752	5,871,128	118,557
Fresh/chilled/frozen	22,072	2,351,090	47,476
U S A	3,504	981,525	19,820
Japan	4,143	420,833	8,498
Thailand	5,604	216,706	4,376
Others	8,822	732,026	14,782
Smoked/dried	771	112,789	2,278
Japan	673	102,571	2,071
U S A	23	6,869	139
Taiwan	53	2,181	44
Others	22	1,168	24
Canned	33,909	3,407,249	68,803
U S A	8,029	722,859	14,597
Singapore	4,240	485,409	9,802
Germany	4,623	439,274	8,870
Others	17,017	1,759,708	35,534

Commodity/Kind	Quantity (MT)	FOB Value (000 P)	FOB Value (000 \$)
3. Seaweeds	41,267	3,540,460	71,492
Seaweeds & other Algae, nes	31,644	1,612,057	32,552
U S A	4,740	251,072	5,070
France	5,477	214,552	4,332
Hongkong	5,521	178,771	3,610
Others	15,906	967,663	19,540
Carrageenan	8,648	1,912,428	38,618
Denmark	1,502	609,370	12,305
France	1,497	285,506	5,765
United Kingdom	1,161	196,799	3,974
Others	4,489	820,752	16,573
Seaweeds and algae used for food	28	1,905	38
Okinawa	7	913	18
Japan	19	805	16
U S A	1	115	2
Others	1	71	1
Kelp powder	947	14,070	284
Japan	879	11,641	235
Spain	21	1,150	23
Thailand	20	921	19
U S A	27	358	7
Total (3) major commodities	110,776	15,638,092	315,781
Total other commodities	48,293	7,085,116	143,069
Grand Total	159,069	22,723,208	458,850

Source of basic data: National Statistics Office (NSO)

**4. Fishery Exports, by Major Country of Destination
in Terms of Value, 2001**

Country/Destination	Quantity (MT)	FOB Value (000 P)	FOB Value (000 \$)
Japan	33,497	6,382,362	158,382
U S A	37,043	4,415,437	109,571
Hongkong	24,061	2,368,752	58,782
Singapore	8,047	770,930	19,131
Korea	5,577	619,945	15,384
United Kingdom	4,783	590,644	14,657
Denmark	4,586	566,683	14,062
Canada	5,242	499,491	12,395
France	18,060	496,456	12,320
Taiwan	6,918	456,274	11,318
Total Major Countries	147,814	17,166,974	426,002
Other Countries	11,255	5,556,234	32,848
Grand Total	159,069	22,723,208	458,850

MAJOR FISHERIES EXPORT IN TERMS OF VALUE, 2001

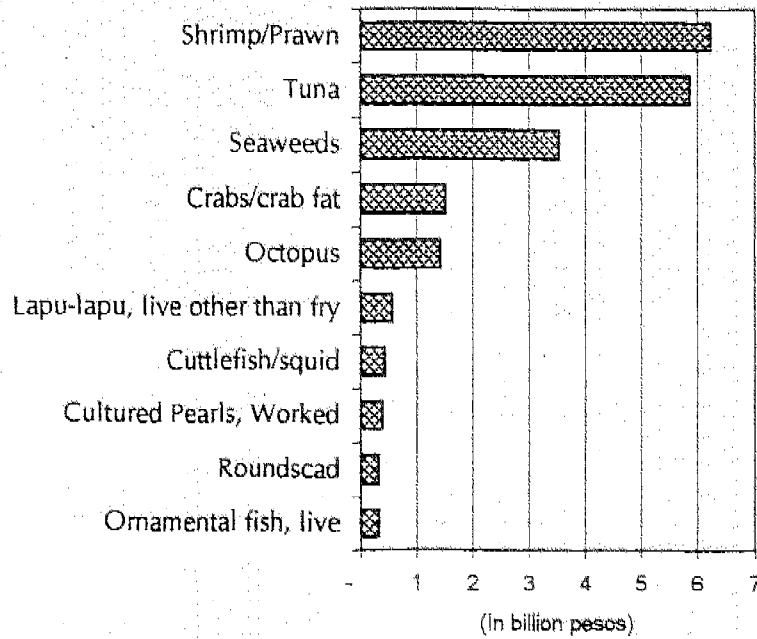


Figure 4

B. IMPORTS ^{5/}

1. Imports of Fish and Fishery Products By Kind, Quantity and Value, 2001

Commodity	Quantity (MT)	FOB Value	
		(000 P)	(000 \$)
Fresh/Frozen/Chilled	72,927	1,431,175	28,399
Flour, Meals & Pellets of Fish Crustaceans and Mollusks Unfit for Human Consumption	84,546	1,585,071	31,453
Canned	1,179	68,390	1,357
Salted, Dried, Smoked, etc.	284	16,932	336
Other Commodities	21,058	713,642	14,161
Grand Total	179,994	3,815,210	75,706

2. Major Fishery Imports in Terms of Value, 2001

Commodity/Kind	Quantity (MT)	FOB Value (000 P)	FOB Value (000 \$)
1. Chilled Frozen Fish	66,385	1,074,385	21,319
a) Tuna	19,126	431,009	8,552
Indonesia	7,058	179,137	3,555
Marshall Is., Rep.	4,820	102,605	2,036
Others	7,248	149,267	2,961
b) Sardines	24,039	286,076	5,677
Spain	15,218	177,428	3,521
Canary Is.	8,045	94,464	1,874
Others	776	14,184	282
c) Mackerel	23,220	357,300	7,090
Korea	5,312	75,385	1,496
New Zealand	2,831	59,135	1,173
Others	15,077	222,780	4,421
2. Flour, meals & pellets of fish crustaceans & mollusks unfit for human consumption	84,546	1,585,071	31,453
Peru	69,277	1,215,587	24,121
Chile	5,233	146,454	2,906
Others	10,036	223,030	4,426
Total major imports	150,931	2,659,456	52,772
Other Commodities	29,063	1,155,754	22,934
Grand Total	179,994	3,815,210	75,706

Source of Data: National Statistics Office

**3. Fishery Imports, by Major Country of Origin
in Terms of Value, 2001**

Major Countries	Quantity (MT)	FOB Value (000 P)	FOB Value (000 \$)
1. Peru	70,319	1,243,907	24,683
2. U S A	16,123	407,287	8,082
3. Indonesia	11,470	299,097	5,935
4. Taiwan	9,661	238,073	4,724
5. Spain	15,287	180,376	3,579
6. New Zealand	3,799	142,780	2,833
7. Thailand	3,481	116,335	2,309
8. Denmark	1,147	103,720	2,058
9. Korea	6,321	103,276	2,049
10. Marshall Is. Rep.	4,820	102,605	2,036
Total major countries	142,428	2,937,456	58,288
Other Countries	37,566	877,754	17,418
Grand Total	179,994	3,815,210	75,706

VII. OTHER FISHERIES INFORMATION

A. FOOD CONSUMPTION ^{11/}

1. Comparison of Mean One-Day per Capita Food Consumption: 1978, 1982, 1987 and 1993

Food Group/Subgroup	Consumption, g			
	(Raw, "as purchased")			
	1978	1982	1987	1993
All Foods	897	915	869	803
Cereals and Cereal Products	367	356	345	340
Rice and Products	308	304	303	282
Corn and Products	38	34	24	36
Other Cereals & Products	21	18	18	22
Starchy Roots and Tubers	37	42	22	17
Sugars and Syrups	19	22	24	19
Fats and Oils	13	14	14	12
Fish, Meat and Poultry	133	154	157	147
Fish and Products	102	113	111	99
Meat and Products	23	32	37	34
Poultry and Products	7	10	9	14
Eggs and Egg Products	8	9	10	12
Milk and Milk Products	42	44	43	44
Dried Beans, Nuts and Seeds	8	10	10	10
Vegetables	145	130	111	106
Green Leafy and Yellow Veg	34	37	29	30
Other Vegetables	111	93	82	76
Fruits	104	102	107	77
Vitamins C-Rich Fruits	30	18	24	21
Other Fruits	74	84	83	56
Miscellaneous	21	32	26	19

2. Mean Per Capita Food Consumption, 1993 ^{a/}

Food Group/Subgroup	Consumption (Raw, "as purchased")		Percent of Total Food Intake*
	kg/yr	g/day	
	All Foods	293	
Cereals and Cereal Product	124	340	42.3
Rice and Products	103	282	35.1
Corn and Products	13	36	4.5
Other Cereals and Products	8	22	2.7
Starchy Roots and Tubers	6	17	2.1
Sugars and Syrups	7	19	2.4
Fats and Oils	4	12	1.5
Fish, Meat and Poultry	54	147	18.3
Fish and Products	36	99	12.3
Meat and Products	12	34	4.2
Poultry and Products	5	14	1.7
Eggs and Egg Products	4	12	1.5
Milk and Milk Products	16	44	5.5
Whole Milk	13	35	4.4
Milk Products	3	9	1.1
Dried Beans, Nuts and Seeds	4	10	1.2
Vegetables	39	106	13.2
Vegetable	11	30	3.7
Other Vegetables	28	76	9.5
Fruits	28	77	9.6
Vitamin C-Rich Fruits	8	21	2.6
Other Fruits	20	56	7
Miscellaneous	7	19	2.5
Beverages	3	9	1.1
Condiments and others	4	11	1.4

a/ available in the kitchen, including inedible and edible wastage

* Numbers may not add up to 100.00 due to rounding off

3. Mean One-Day Per Capita Food Consumption, 1993 ^{a/}

Food Group/Subgroup	Philis.	Ilocos	Cagayan Valley	Central Luzon	Southern Tagalog	Bicol	Western Visayas	Central Visayas
Cereals & Cereal Products	340	361	371	340	325	322	338	353
Rice & Products	282	344	344	310	291	292	307	179
Corn & Products	36	2	7	6	2	8	19	157
Other Cereals & Products	22	15	20	24	32	23	12	17
Starchy Roots & Tubers	17	8	19	12	12	28	5	15
Sugars and Syrups	19	18	16	22	24	17	15	11
Fats and Oils	12	10	10	15	15	16	10	8
Vegetables	106	172	174	120	107	100	78	61
Green & Leafy Yellow Vegetables	30	40	38	19	23	27	35	30
Other Vegetables	76	133	137	102	84	73	43	32
Fruits	77	68	51	94	118	78	66	41
Vit. C-Rich Fruits	21	24	8	37	30	13	20	4
Other Fruits	56	43	43	57	88	64	46	37
Fish, Meat & Poultry	147	140	107	156	144	133	142	165
Fish & Products	99	84	66	78	87	104	114	139
Meat & Products	34	47	33	45	45	22	16	19
Poultry & Products	14	9	8	33	11	8	12	8
Eggs	12	13	9	19	16	9	8	8
Milk & Milk Products	44	32	31	73	52	35	34	27
Whole Milk	35	29	28	43	42	29	31	27
Milk Products	9	3	2	30	10	6	3	n
Dried Beans, Nuts & Seeds	10	12	11	13	11	6	7	10
Miscellaneous (Beverages, condiments & others)	19	10	14	24	20	17	21	14

^{a/} Expressed as raw, "as purchased", in g/day.

Eastern Visayas	Western Mindanao	Northern Mindanao	Southern Mindanao	Central Mindanao	CAR	CARAGA	ARMM	NCR
363	358	383	371	366	356	371	357	293
321	228	247	232	299	330	330	331	252
22	118	121	126	57	3	31	6	1
20	12	16	13	10	23	10	20	40
31	15	13	20	9	23	26	70	12
15	13	18	18	16	23	12	24	23
9	118	11	12	10	14	10	12	14
59	49	112	123	119	177	92	106	87
17	69	39	51	52	38	28	35	18
42		72	72	68	139	64	71	69
62	74	70	69	85	73	57	83	78
7	17	15	14	8	16	2	19	34
55	58	55	55	77	57	55	64	44
150	161	145	143	124	122	121	135	181
127	119	112	115	91	54	100	121	95
15	21	24	20	27	54	15	6	63
8	21	9	8	6	14	6	7	23
5	11	11	12	18	11	9	8	16
21	22	24	26	23	79	18	14	86
20	21	21	25	18	42	18	13	66
n	1	3	1	6	37	0	1	19
3	10	10	11	8	14	9	5	10
20	17	20	19	20	16	17	12	29

4. Per Capita Food Consumption of Fish and Fishery Products, 1993

Fish and Other Products		Total (Kg/Year)
1. FISH		36
1.1	Fresh Fish	24
	Tulingan (Frigate Tuna)	4
	Bangus (Milkfish)	1
	Galunggong (Roundscad)	4
	Dilis, Buo (Anchovy)	1
	Alumahan (Indian Mackerel)	1
	Tamban (Sardines)	2
	Dalagang Bukid (Fusilier)	
	Sapsap (Slipmouth)	1
	Bisugo (Threadfin Bream)	1
	Tilapia (Cichlid)	1
	Albakora/Tambakol	1
	Balila/Espada	n
	Hasa-hasa	n
	Lapu-lapu	n
	Matangbaka	1
	Maya-Maya	n
	Salay-salay	n
	Silinyasi/Tunsoy	n
	Tanigue	n
	Others (fresh fish & cooked fish recipe)	4
1.2	Dried Fish (as fresh fish)	4
1.3	Processed Fish *	4
	Bagoong (as fresh fish)	1
	Patis	n
	Canned Fish (sardines, mackerel, salmon, etc)	2
	Smoked fish (all tinapa type)	1
1.4	Crustaceans and Mollusks	4
	Shrimp (all type)	n
	Crabs	1
	Squid/Octopus	1
	Tahong	1
	Others (fresh)	1
	Dried and Processed (as fresh)	n
	Bagoong (as fresh)	n

Notes:

- a.) Raw as purchased weight or as available in the kitchen including inedible and edible wastage.
- b.) Breakdown don't add up to total due to roundings
- c.) N- negligible (less than 0.5 grams)

**B. PRODUCTIVE AREA IN AQUACULTURE FISHERIES,
BY CULTURE SYSTEM AND REGION, 1995* ^{6/}**
(in ha)

Region	Total Aquaculture	Fishpond		Fishpen in Fresh & Marine Water	Fishcage in Fresh & Marine Water	Mariculture		
		Brackish Water	Fresh Water			Oyster	Mussel	Seaweed
NCR	4,395.30	4182	0.00	196.88	3.53		12.89	
CAR	112.22	0	65.03		47.19			
I	9,619.00	8726	797.46	1.35	2.00	92.19		
II	1,874.68	1367	490.32		12.87	4.49		
III	38,884.44	34368	4,427.44	5.06	32.28	51.66		
IV	14,668.48	10168	73.39	3,992.38	365.23	8.13	24.81	36.54
V	6,312.59	5433	25.37		541.04	0.24	30.92	282.02
VI	29,862.23	29393	84.03		0.37	58.20	283.26	43.37
VII	6,083.15	5689	10.59			2.15	0.10	381.31
VIII	2,469.42	2433	5.29				28.22	2.91
IX	29,286.66	27304	15.04	5.86		9.84	0.78	1,951.15
X	932.92	919	11.91		0.01			2.00
XI	6,002.04	5299	316.91	4.15	354.92	1.09		25.97
XII	3,518.23	3338	176.23				0.25	3.75
XIII	3,524.56	3501	20.03		0.15			3.38
ARMM	4,688.62	1077	3.67	0.15	9.36			3,598.44
TOTAL	162,234.54	143,197	6,522.71	4,205.83	1,368.95	227.98	381.22	6,330.84

* This refers to the area being utilized during the reference period.

C. WORLD FISHERIES PRODUCTION OF FISH, CRUSTACEANS, MOLLUSCS AND AQUATIC PLANTS
(includes seaweeds), BY CAPTURE AND AQUACULTURE, BY MAJOR PRODUCERS, 1999 ^{12/}
(in 000 MT)

Major Countries	Total		Fish Crustaceans & Molluscs			Aquatic Plants (includes seaweeds)		
	(000 MT)	% Share	Capture	Aqua-culture	Total	Capture	Aqua-culture	Total
1. China	47,500	34.7	17,240	22,790	40,030	216	7,254	7,470
2. Peru	8,439	6.2	8,429	8	8,437	2	n	2
3. Japan	6,612	4.8	5,176	759	5,935	121	556	677
4. Chile	5,586	4.1	5,051	274	5,325	230	31	261
5. India	5,452	4.0	3,317	2,035	5,352	100	-	100
6. U. S. A.	5,308	3.9	4,750	479	5,229	79	-	79
7. Indonesia	4,847	3.5	4,149	648	4,797	8	42	50
8. Russian Fed.	4,239	3.1	4,141	69	4,210	26	3	29
9. Thailand	3,608	2.6	3,005	603	3,608	-	-	-
10. Norway	3,264	2.4	2,620	466	3,086	178	-	178
11. Korea Rep.	2,910	2.1	2,120	303	2,423	13	474	487
12. Philippines	2,819	2.1	1,870	328	2,198	-	621	621
13. Other Countries	36,256	26.5	30,999	4,548	35,547	229	480	709
World Total	136,840	100.0	92,867	33,310	126,177	1,202	9,461	10,663

* Includes seaweeds in capture and aquaculture

**D. WORLD AQUACULTURE PRODUCTION OF FISH,
CRUSTACEANS, MOLLUSCS, ETC. BY PRINCIPAL
PRODUCERS, 1999**

Country	Production (000 MT)	% Share to Total	Value (US\$' 000)	% Share to Total
1. China	22,790	68.4	22,632	47.3
2. India	2,035	6.1	2,335	4.9
3. Japan	759	2.3	3,366	7.0
4. Indonesia	647	1.9	1,851	3.9
5. Bangladesh	620	1.9	1,114	2.3
6. Thailand	603	1.8	1,706	3.6
7. Vietnam	595	1.8	1,396	2.9
8. U S A	479	1.4	833	1.7
9. Norway	466	1.4	1,314	2.7
10. Philippines	328	1.0	630	1.3
11. Spain	318	1.0	295	0.6
12. Korea Rep.	303	0.9	579	1.2
13. Chile	274	0.8	908	1.9
14. France	268	0.8	602	1.3
15. Other Countries	2,825	8.5	8,314	17.4
World Total	33,310	100.0	47,875	100.0

**E. WORLD AQUACULTURE PRODUCTION
OF AQUATIC PLANTS (Includes Seaweeds)
BY PRINCIPAL PRODUCERS, 1999**

Country	Production (000 MT)	% Share to Total
1. China, Main	7,470	70.1
2. Japan	677	6.3
3. Philippines	621	5.8
4. Korea Rep.	487	4.6
5. Korea D P Rp	413	3.9
6. Chile	261	2.4
7. India	100	0.9
8. Other Countries	634	5.9
World Total	10,663	100.0

**F. PRICES OF SELECTED FISH SPECIES,
PHILIPPINES, 2001 ^{13/}**

(Peso per Kilogram)

Species	Wholesale	Retail
1. Indian mackerel (Alumahan)	60.24	70.72
2. Milkfish (Bangus)	66.74	82.50
3. Threadfin bream (Bisugo)	68.29	91.34
4. Caesio (Dalagang-bukid)	67.99	93.08
5. Anchovies (Dilis)	35.96	50.21
6. Roundscad (Galunggong)	44.39	59.44
7. Slipmouth (Sapsap)	35.77	71.58
8. Tiger prawn (Sugpo)	342.04	351.25
9. Tilapia	45.80	59.17
10. Frigate tuna (Tulingan)	47.99	57.30
11. Blue crab (Alimasag)	62.38	97.96

ENDNOTES

Sources of Data:

- 1/ NAMRIA, 1990
- 2/ 1992 Fishery Statistics, Bureau of Agricultural Statistics (BAS)
This refers to fishpond area acquired by the operator whether utilized or not during the reference period.
This includes nursery and transition ponds and undeveloped areas.
- 3/ National Accounts of the Philippines as of May 2002, National Statistical Coordination Board (NSCB)
- 4/ 1980 Census of Fisheries
- 5/ Preliminary data of the Trade Division, National Statistics Office (NSO)
- 6/ Preliminary data of the Fishery Statistics Division, Bureau of Agricultural Statistics (BAS)
- 7/ Preliminary data of the Fishery Statistics Division, Bureau of Agricultural Statistics (BAS)
Note: Province composition of Regions IX, X, XI, XII, ARMM and CARAGA was based on E.O. 36 (Providing for the Reorganization of the Administrative Regions in Mindanao and other purposes).
- 8/ Directory of Philippine Wetlands, Volume II, AWBPF1
- 9/ BFAR Regional Yearbook, 2000
- 10/ BFAR Regulatory and Quarantine Division
- 11/ Food and Nutrition Research Institute Website, (<http://www.fnri.dost.gov.ph>.)
- 12/ FAO Website (<http://www.fao.org>.)
- 13/ Agricultural Marketing Statistical Analysis Division (AMSAD, BAS)